



SZABO SCANDIC

Part of Europa Biosite

Produktinformation



Forschungsprodukte & Biochemikalien



Zellkultur & Verbrauchsmaterial



Diagnostik & molekulare Diagnostik



Laborgeräte & Service

Weitere Information auf den folgenden Seiten!
See the following pages for more information!



Lieferung & Zahlungsart

siehe unsere [Liefer- und Versandbedingungen](#)

Zuschläge

- Mindermengenzuschlag
- Trockeneiszuschlag
- Gefahrgutzuschlag
- Expressversand

SZABO-SCANDIC HandelsgmbH

Quellenstraße 110, A-1100 Wien

T. +43(0)1 489 3961-0

F. +43(0)1 489 3961-7

mail@szabo-scandic.com

www.szabo-scandic.com

[linkedin.com/company/szaboscandic](https://www.linkedin.com/company/szaboscandic) 

Cullin 1 antibody [GT1236]

Cat. No. GTX02833

Host	Rabbit
Clonality	Monoclonal
Isotype	IgG
Application	WB
Reactivity	Human, Mouse, Rat

Package
100 µl

APPLICATION

Application Note

*Optimal dilutions/concentrations should be determined by the researcher.

Suggested dilution	Recommended dilution
WB	1:500 - 1:2000

Not tested in other applications.

Calculated MW	90 kDa. (Note)
Observed MW	90 95 kDa. The observed M.W. is based on the following publication. PMID: 22457814

PROPERTIES

Form	Liquid
Buffer	PBS pH7.3, 0.05% BSA, 50% Glycerol
Preservative	0.02% Sodium azide
Storage	Store as concentrated solution. Centrifuge briefly prior to opening vial. For short-term storage (1-2 weeks), store at 4°C. For long-term storage, we recommend adding 50% glycerol, then aliquot and store at -20°C or below. Avoid multiple freeze-thaw cycles.
Concentration	0.45 mg/ml (Please refer to the vial label for the specific concentration.)
Immunogen	A synthesized peptide derived from human Cullin 1
Purification	Purified by antigen-affinity chromatography
Conjugation	Unconjugated

Note

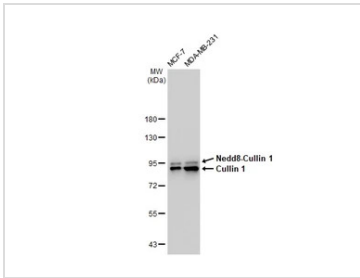
For laboratory research use only. Not for any clinical, therapeutic, or diagnostic use in humans or animals. Not for animal or human consumption.

Purchasers shall not, and agree not to enable third parties to, analyze, copy, reverse engineer or otherwise attempt to determine the structure or sequence of the product.



For full product information, images and publications, please visit our [website](#).

DATA IMAGES

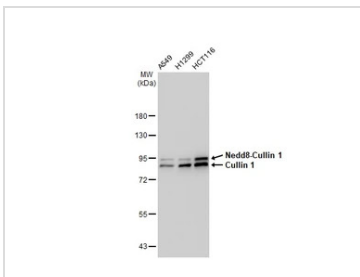


GTX02833 WB Image

Various whole cell extracts (30 µg) were separated by 7.5% SDS-PAGE, and the membrane was blotted with Cullin 1 antibody [GT1236] (GTX02833) diluted at 1:1000. The HRP-conjugated anti-rabbit IgG antibody (GTX213110-01) was used to detect the primary antibody.

Double bands were observed. It is possibly due to post-translational modification.

Reference : PMID: 22457814

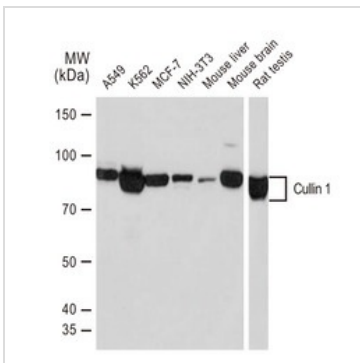


GTX02833 WB Image

Various whole cell extracts (30 µg) were separated by 7.5% SDS-PAGE, and the membrane was blotted with Cullin 1 antibody [GT1236] (GTX02833) diluted at 1:1000. The HRP-conjugated anti-rabbit IgG antibody (GTX213110-01) was used to detect the primary antibody.

Double bands were observed. It is possibly due to post-translational modification.

Reference : PMID: 22457814



GTX02833 WB Image

WB analysis of various samples using GTX02833 Cullin 1 antibody [GT1236].

Dilution : 1:1000

Loading : 25µg



For full product information, images and publications, please visit our [website](#).