



SZABO SCANDIC

Part of Europa Biosite

Produktinformation



Forschungsprodukte & Biochemikalien



Zellkultur & Verbrauchsmaterial



Diagnostik & molekulare Diagnostik



Laborgeräte & Service

Weitere Information auf den folgenden Seiten!
See the following pages for more information!



Lieferung & Zahlungsart

siehe unsere [Liefer- und Versandbedingungen](#)

Zuschläge

- Mindermengenzuschlag
- Trockeneiszuschlag
- Gefahrgutzuschlag
- Expressversand

SZABO-SCANDIC HandelsgmbH

Quellenstraße 110, A-1100 Wien

T. +43(0)1 489 3961-0

F. +43(0)1 489 3961-7

mail@szabo-scandic.com

www.szabo-scandic.com

[linkedin.com/company/szaboscandic](https://www.linkedin.com/company/szaboscandic) 

Integrin alpha 2 antibody [GT1238]

Cat. No. GTX02835

Host	Rabbit
Clonality	Monoclonal
Isotype	IgG
Application	WB, IHC-P
Reactivity	Human, Mouse, Rat

Reference (1)
 Package
 100 µl

APPLICATION

Application Note

*Optimal dilutions/concentrations should be determined by the researcher.

Suggested dilution	Recommended dilution
WB	1:500 - 1:2000
IHC-P	1:50 - 1:200

Not tested in other applications.

Calculated MW 129 kDa. ([Note](#))

Observed MW 150-160 kDa. The observed M.W. is based on the following publication. PMID: 19411307|18787945

PROPERTIES

Form	Liquid
Buffer	PBS pH7.3, 0.05% BSA, 50% Glycerol
Preservative	0.02% Sodium azide
Storage	Store as concentrated solution. Centrifuge briefly prior to opening vial. For short-term storage (1-2 weeks), store at 4°C. For long-term storage, we recommend adding 50% glycerol, then aliquot and store at -20°C or below. Avoid multiple freeze-thaw cycles.
Concentration	0.45 mg/ml (Please refer to the vial label for the specific concentration.)
Immunogen	A synthesized peptide derived from human Integrin alpha 2
Purification	Purified by antigen-affinity chromatography
Conjugation	Unconjugated

Note

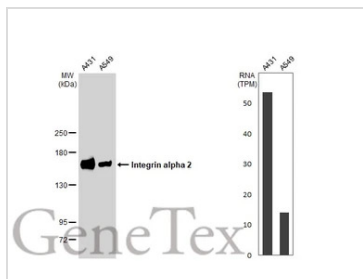
For laboratory research use only. Not for any clinical, therapeutic, or diagnostic use in humans or animals. Not for animal or human consumption.

Purchasers shall not, and agree not to enable third parties to, analyze, copy, reverse engineer or otherwise attempt to determine the structure or sequence of the product.



For full product information, images and publications, please visit our [website](#).

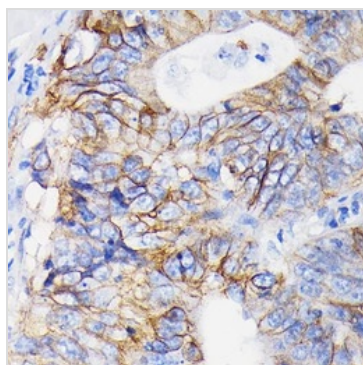
DATA IMAGES



GTX02835 WB Image

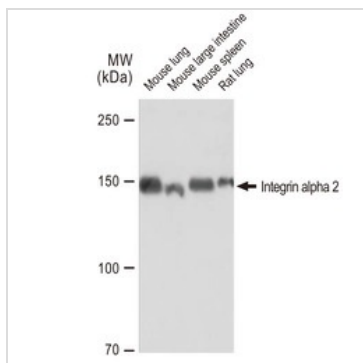
Various whole cell extracts (30 µg) were separated by 5% SDS-PAGE, and the membrane was blotted with Integrin alpha 2 antibody [GT1238] (GTX02835) diluted at 1:1000. The HRP-conjugated anti-rabbit IgG antibody (GTX213110-01) was used to detect the primary antibody. Corresponding RNA expression data for the same cell lines are based on Human Protein Atlas program.

The observed M.W. is based on the publication: PMID: 19411307 and PMID: 18787945



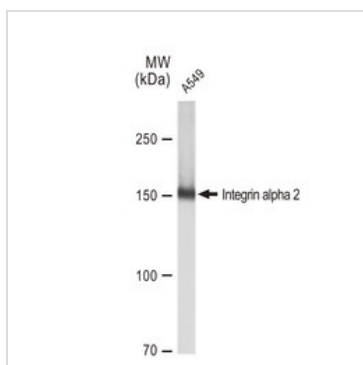
GTX02835 IHC-P Image

IHC-P analysis of human colon carcinoma section using GTX02835 Integrin alpha 2 antibody [GT1238].
Dilution : 1:100



GTX02835 WB Image

WB analysis of various samples using GTX02835 Integrin alpha 2 antibody [GT1238].
Dilution : 1:1000
Loading : 25µg



GTX02835 WB Image

WB analysis of A549 whole cell lysate using GTX02835 Integrin alpha 2 antibody [GT1238].
Dilution : 1:1000
Loading : 25µg



For full product information, images and publications, please visit our [website](#).