



# SZABO SCANDIC

Part of Europa Biosite

## Produktinformation



Forschungsprodukte & Biochemikalien



Zellkultur & Verbrauchsmaterial



Diagnostik & molekulare Diagnostik



Laborgeräte & Service

Weitere Information auf den folgenden Seiten!  
See the following pages for more information!



### Lieferung & Zahlungsart

siehe unsere [Liefer- und Versandbedingungen](#)

### Zuschläge

- Mindermengenzuschlag
- Trockeneiszuschlag
- Gefahrgutzuschlag
- Expressversand

### SZABO-SCANDIC HandelsgmbH

Quellenstraße 110, A-1100 Wien

T. +43(0)1 489 3961-0

F. +43(0)1 489 3961-7

[mail@szabo-scandic.com](mailto:mail@szabo-scandic.com)

[www.szabo-scandic.com](http://www.szabo-scandic.com)

[linkedin.com/company/szaboscandic](https://www.linkedin.com/company/szaboscandic) 

## STAT4 antibody [GT1244]

**Cat. No. GTX02841**

|                    |                   |
|--------------------|-------------------|
| <b>Host</b>        | Rabbit            |
| <b>Clonality</b>   | Monoclonal        |
| <b>Isotype</b>     | IgG               |
| <b>Application</b> | WB, ICC/IF        |
| <b>Reactivity</b>  | Human, Mouse, Rat |

**Package**  
100 µl

## APPLICATION

**Application Note**

\*Optimal dilutions/concentrations should be determined by the researcher.

| Suggested dilution | Recommended dilution |
|--------------------|----------------------|
| WB                 | 1:500 - 1:2000       |
| ICC/IF             | 1:50 - 1:200         |

Not tested in other applications.

**Calculated MW** 86 kDa. ([Note](#))

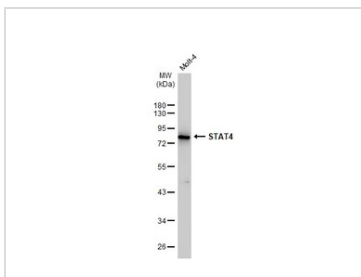
## PROPERTIES

|                      |  |
|----------------------|--|
| <b>Form</b>          | Liquid   |
| <b>Buffer</b>        | PBS pH7.3, 0.05% BSA, 50% Glycerol   |
| <b>Preservative</b>  | 0.02% Sodium azide   |
| <b>Storage</b>       | Store as concentrated solution. Centrifuge briefly prior to opening vial. For short-term storage (1-2 weeks), store at 4°C. For long-term storage, we recommend adding 50% glycerol, then aliquot and store at -20°C or below. Avoid multiple freeze-thaw cycles.  |
| <b>Concentration</b> | 1.05 mg/ml (Please refer to the vial label for the specific concentration.)  |
| <b>Immunogen</b>     | A synthesized peptide derived from human STAT4   |
| <b>Purification</b>  | Purified by antigen-affinity chromatography  |
| <b>Conjugation</b>   | Unconjugated   |
| <b>Note</b>          | For laboratory research use only. Not for any clinical, therapeutic, or diagnostic use in humans or animals. Not for animal or human consumption.<br><br>Purchasers shall not, and agree not to enable third parties to, analyze, copy, reverse engineer or otherwise attempt to determine the structure or sequence of the product. |



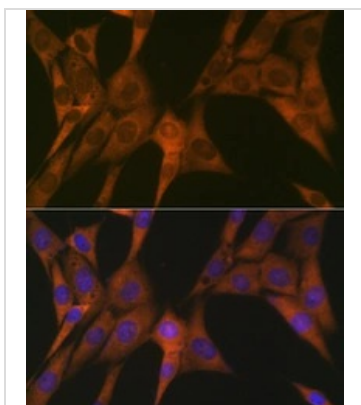
For full product information, images and publications, please visit our [website](#).

DATA IMAGES



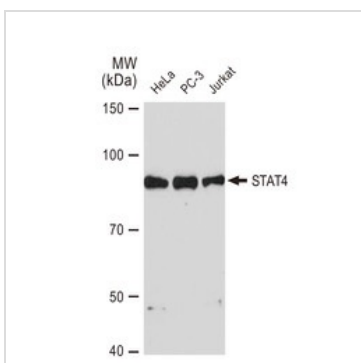
**GTX02841 WB Image**

Whole cell extract (30 µg) was separated by 10% SDS-PAGE, and the membrane was blotted with STAT4 antibody [GT1244] (GTX02841) diluted at 1:1000. The HRP-conjugated anti-rabbit IgG antibody (GTX213110-01) was used to detect the primary antibody.



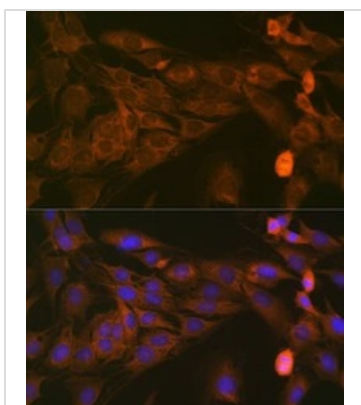
**GTX02841 ICC/IF Image**

ICC/IF analysis of NIH-3T3 cells using GTX02841 STAT4 antibody [GT1244].  
Dilution : 1:100  
Blue : DAPI for nuclear staining.



**GTX02841 WB Image**

WB analysis of various samples using GTX02841 STAT4 antibody [GT1244].  
Dilution : 1:1000  
Loading : 25µg



**GTX02841 ICC/IF Image**

ICC/IF analysis of C6 cells using GTX02841 STAT4 antibody [GT1244].  
Dilution : 1:100  
Blue : DAPI for nuclear staining.



For full product information, images and publications, please visit our [website](#).