



SZABO SCANDIC

Part of Europa Biosite

Produktinformation



Forschungsprodukte & Biochemikalien



Zellkultur & Verbrauchsmaterial



Diagnostik & molekulare Diagnostik



Laborgeräte & Service

Weitere Information auf den folgenden Seiten!
See the following pages for more information!



Lieferung & Zahlungsart

siehe unsere [Liefer- und Versandbedingungen](#)

Zuschläge

- Mindermengenzuschlag
- Trockeneiszuschlag
- Gefahrgutzuschlag
- Expressversand

SZABO-SCANDIC HandelsgmbH

Quellenstraße 110, A-1100 Wien

T. +43(0)1 489 3961-0

F. +43(0)1 489 3961-7

mail@szabo-scandic.com

www.szabo-scandic.com

[linkedin.com/company/szaboscandic](https://www.linkedin.com/company/szaboscandic) 

DDX17 antibody [GT1254]

Cat. No. GTX02851

Host	Rabbit
Clonality	Monoclonal
Isotype	IgG
Application	WB, IHC-P
Reactivity	Human, Mouse, Rat

Package
100 µl

APPLICATION

Application Note

*Optimal dilutions/concentrations should be determined by the researcher.

Suggested dilution	Recommended dilution
WB	1:500 - 1:2000
IHC-P	1:50 - 1:200

Not tested in other applications.

Calculated MW 80 kDa. ([Note](#))

Observed MW 72|82 kDa. The observed M.W. is based on the following publication. PMID: 31653828

PROPERTIES

Form Liquid

Buffer PBS pH7.3, 0.05% BSA, 50% Glycerol

Preservative 0.02% Sodium azide

Storage Store as concentrated solution. Centrifuge briefly prior to opening vial. For short-term storage (1-2 weeks), store at 4°C. For long-term storage, we recommend adding 50% glycerol, then aliquot and store at -20°C or below. Avoid multiple freeze-thaw cycles.

Concentration 0.54 mg/ml (Please refer to the vial label for the specific concentration.)

Immunogen A synthesized peptide derived from human DDX17

Purification Purified by antigen-affinity chromatography

Conjugation Unconjugated

Note

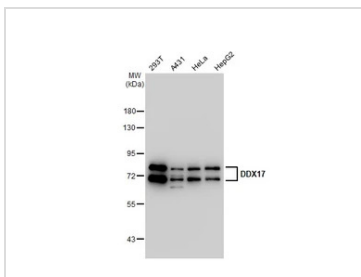
For laboratory research use only. Not for any clinical, therapeutic, or diagnostic use in humans or animals. Not for animal or human consumption.

Purchasers shall not, and agree not to enable third parties to, analyze, copy, reverse engineer or otherwise attempt to determine the structure or sequence of the product.



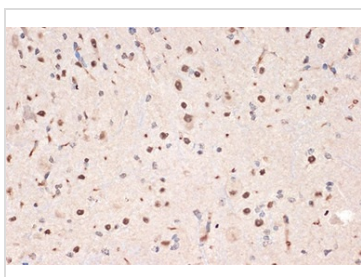
For full product information, images and publications, please visit our [website](#).

DATA IMAGES



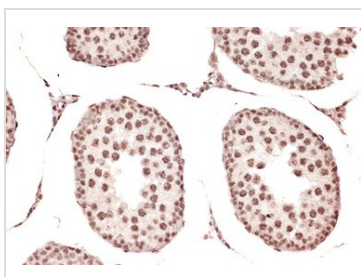
GTX02851 WB Image

Various whole cell extracts (30 µg) were separated by 7.5% SDS-PAGE, and the membrane was blotted with DDX17 antibody [GT1254] (GTX02851) diluted at 1:1000. The HRP-conjugated anti-rabbit IgG antibody (GTX213110-01) was used to detect the primary antibody.
The observed M.W. is based on the publication: PMID: 31653828



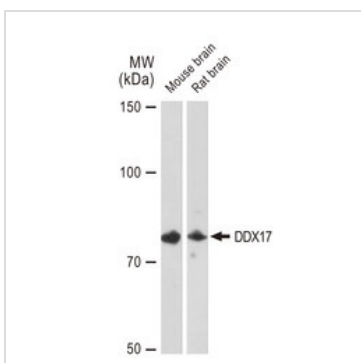
GTX02851 IHC-P Image

IHC-P analysis of mouse spinal cord section using GTX02851 DDX17 antibody [GT1254].
Dilution : 1:100



GTX02851 IHC-P Image

IHC-P analysis of rat testis tissue section using GTX02851 DDX17 antibody [GT1254].
Dilution : 1:100



GTX02851 WB Image

WB analysis of various samples using GTX02851 DDX17 antibody [GT1254].
Dilution : 1:1000
Loading : 25µg



For full product information, images and publications, please visit our [website](#).