



SZABO SCANDIC

Part of Europa Biosite

Produktinformation



Forschungsprodukte & Biochemikalien



Zellkultur & Verbrauchsmaterial



Diagnostik & molekulare Diagnostik



Laborgeräte & Service

Weitere Information auf den folgenden Seiten!
See the following pages for more information!



Lieferung & Zahlungsart

siehe unsere [Liefer- und Versandbedingungen](#)

Zuschläge

- Mindermengenzuschlag
- Trockeneiszuschlag
- Gefahrgutzuschlag
- Expressversand

SZABO-SCANDIC HandelsgmbH

Quellenstraße 110, A-1100 Wien

T. +43(0)1 489 3961-0

F. +43(0)1 489 3961-7

mail@szabo-scandic.com

www.szabo-scandic.com

[linkedin.com/company/szaboscandic](https://www.linkedin.com/company/szaboscandic) 

HB EGF antibody [GT1263]

Cat. No. GTX02860

Host	Rabbit
Clonality	Monoclonal
Isotype	IgG
Application	WB
Reactivity	Human, Mouse, Rat

Package
100 µl

APPLICATION

Application Note

*Optimal dilutions/concentrations should be determined by the researcher.

Suggested dilution	Recommended dilution
--------------------	----------------------

WB	1:500 - 1:2000
----	----------------

Not tested in other applications.

Calculated MW	23 kDa. (Note)
----------------------	----------------------------------

PROPERTIES

Form	Liquid
-------------	--------

Buffer	PBS pH7.3, 0.05% BSA, 50% Glycerol
---------------	------------------------------------

Preservative	0.02% Sodium azide
---------------------	--------------------

Storage	Store as concentrated solution. Centrifuge briefly prior to opening vial. For short-term storage (1-2 weeks), store at 4°C. For long-term storage, we recommend adding 50% glycerol, then aliquot and store at -20°C or below. Avoid multiple freeze-thaw cycles.
----------------	---

Concentration	0.52 mg/ml (Please refer to the vial label for the specific concentration.)
----------------------	---

Immunogen	A synthesized peptide derived from human HB EGF
------------------	---

Purification	Purified by antigen-affinity chromatography
---------------------	---

Conjugation	Unconjugated
--------------------	--------------

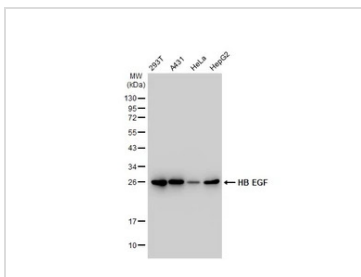
Note	For laboratory research use only. Not for any clinical, therapeutic, or diagnostic use in humans or animals. Not for animal or human consumption.
-------------	---

Note	Purchasers shall not, and agree not to enable third parties to, analyze, copy, reverse engineer or otherwise attempt to determine the structure or sequence of the product.
-------------	---



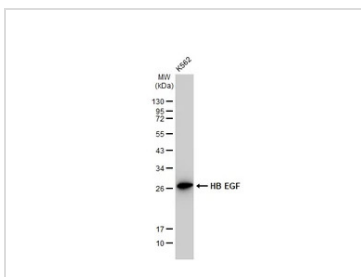
For full product information, images and publications, please visit our [website](#).

DATA IMAGES



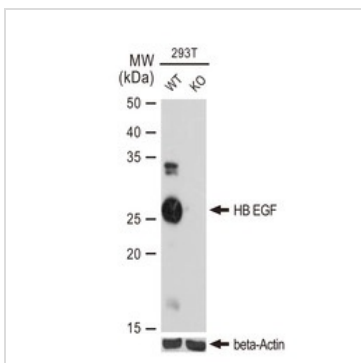
GTX02860 WB Image

Various whole cell extracts (30 µg) were separated by 12% SDS-PAGE, and the membrane was blotted with HB EGF antibody [GT1263] (GTX02860) diluted at 1:1000. The HRP-conjugated anti-rabbit IgG antibody (GTX213110-01) was used to detect the primary antibody.



GTX02860 WB Image

Whole cell extract (30 µg) was separated by 12% SDS-PAGE, and the membrane was blotted with HB EGF antibody [GT1263] (GTX02860) diluted at 1:1000. The HRP-conjugated anti-rabbit IgG antibody (GTX213110-01) was used to detect the primary antibody.

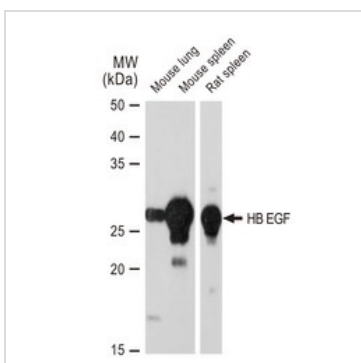


GTX02860 WB Image

WB analysis of wide-type (WT) and HB EGF knockout (KO) 293T cells using GTX02860 HB EGF antibody [GT1263].

Dilution : 1:1000

Loading : 25µg



GTX02860 WB Image

WB analysis of various samples using GTX02860 HB EGF antibody [GT1263].

Dilution : 1:1000

Loading : 25µg



For full product information, images and publications, please visit our [website](#).