



SZABO SCANDIC

Part of Europa Biosite

Produktinformation



Forschungsprodukte & Biochemikalien



Zellkultur & Verbrauchsmaterial



Diagnostik & molekulare Diagnostik



Laborgeräte & Service

Weitere Information auf den folgenden Seiten!
See the following pages for more information!



Lieferung & Zahlungsart

siehe unsere [Liefer- und Versandbedingungen](#)

Zuschläge

- Mindermengenzuschlag
- Trockeneiszuschlag
- Gefahrgutzuschlag
- Expressversand

SZABO-SCANDIC HandelsgmbH

Quellenstraße 110, A-1100 Wien

T. +43(0)1 489 3961-0

F. +43(0)1 489 3961-7

mail@szabo-scandic.com

www.szabo-scandic.com

[linkedin.com/company/szaboscandic](https://www.linkedin.com/company/szaboscandic) 

Human IL4 protein, His tag (active)

Cat. No. GTX02862-pro**Application** Functional Assay**Species** Human**Package**

50 µg

APPLICATION

Application Note

Measured in a cell proliferation assay using TF-1 human erythroleukemic cell. The ED₅₀ range ≤ 0.5 ng/ml.

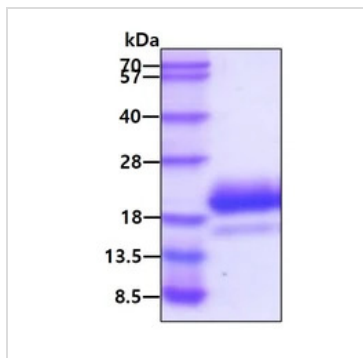
Calculated MW 17 kDa. ([Note](#))

PROPERTIES

Form Liquid**Buffer** PBS (pH7.4), 10% Glycerol**Preservative** No preservative**Storage** Store as concentrated solution. Centrifuge briefly prior to opening vial. For short-term storage (1 week), store at 4°C. For long-term storage, aliquot and store at -20°C or below. Avoid multiple freeze-thaw cycles.**Concentration** 0.5 mg/ml (Please refer to the vial label for the specific concentration.)**Region/Sequence** His-Tagged, 25-153aa (P05112, NP_000580)**Expression System** HEK293 cells**Purity** > 90% by SDS-PAGE**Endotoxin** < 1.0 EU/µg (determined by LAL method)**Conjugation** Unconjugated**Note** For *In vitro* laboratory use only. Not for any clinical, therapeutic, or diagnostic use in humans or animals. Not for animal or human consumption.

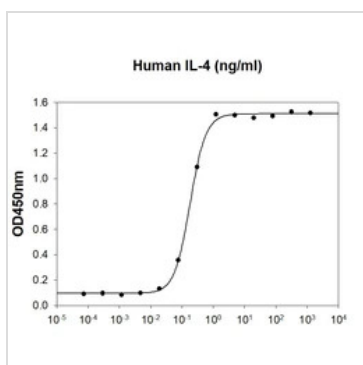
For full product information, images and publications, please visit our [website](#).

DATA IMAGES



GTX02862-pro Image

SDS-PAGE analysis of 3µg GTX02862-pro Human IL4 protein, His tag (active) under reducing condition.



GTX02862-pro Functional Assay Image

Cell proliferation assay of Human IL4 protein (active) (GTX02862-pro) in TF-1 cells.

ED₅₀ : ≤ 0.5 ng/ml



For full product information, images and publications, please visit our [website](#).