



SZABO SCANDIC

Part of Europa Biosite

Produktinformation



Forschungsprodukte & Biochemikalien



Zellkultur & Verbrauchsmaterial



Diagnostik & molekulare Diagnostik



Laborgeräte & Service

Weitere Information auf den folgenden Seiten!
See the following pages for more information!



Lieferung & Zahlungsart

siehe unsere [Liefer- und Versandbedingungen](#)

Zuschläge

- Mindermengenzuschlag
- Trockeneiszuschlag
- Gefahrgutzuschlag
- Expressversand

SZABO-SCANDIC HandelsgmbH

Quellenstraße 110, A-1100 Wien

T. +43(0)1 489 3961-0

F. +43(0)1 489 3961-7

mail@szabo-scandic.com

www.szabo-scandic.com

[linkedin.com/company/szaboscandic](https://www.linkedin.com/company/szaboscandic) 

c-Met (phospho Tyr1234) antibody

Cat. No. GTX02868

Host	Rabbit
Clonality	Polyclonal
Isotype	IgG
Application	WB, ICC/IF, ELISA
Reactivity	Human, Mouse, Rat

Package
100 µl

APPLICATION

Application Note

*Optimal dilutions/concentrations should be determined by the researcher.

Suggested dilution	Recommended dilution
WB	Assay dependent
ICC/IF	Assay dependent
ELISA	Assay dependent

Not tested in other applications.

Calculated MW 156 kDa. ([Note](#))

PROPERTIES

Form	Liquid
Buffer	PBS pH7.4, 150mM NaCl, 50% Glycerol
Preservative	0.02% Sodium azide
Storage	Store as concentrated solution. Centrifuge briefly prior to opening vial. For short-term storage (1-2 weeks), store at 4°C. For long-term storage, aliquot and store at -20°C or below. Avoid multiple freeze-thaw cycles.
Concentration	1 mg/ml (Please refer to the vial label for the specific concentration.)
Immunogen	A synthesized peptide derived from human c-Met around the phosphorylation site of Tyr1234.
Purification	Purified by affinity purification via sequential chromatography on phospho-peptide and non-phospho-peptide affinity columns From serum
Conjugation	Unconjugated



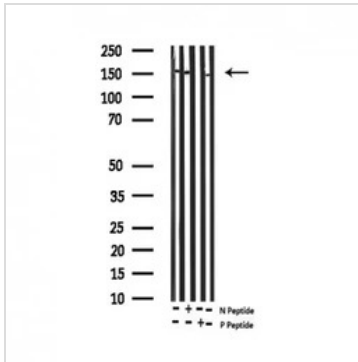
For full product information, images and publications, please visit our [website](#).

For laboratory research use only. Not for any clinical, therapeutic, or diagnostic use in humans or animals. Not for animal or human consumption.

Note

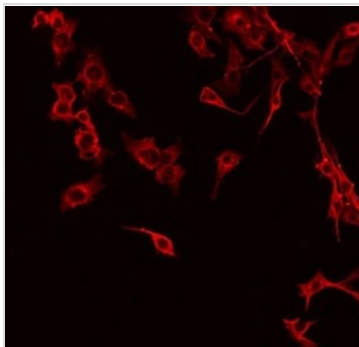
Purchasers shall not, and agree not to enable third parties to, analyze, copy, reverse engineer or otherwise attempt to determine the structure or sequence of the product.

DATA IMAGES



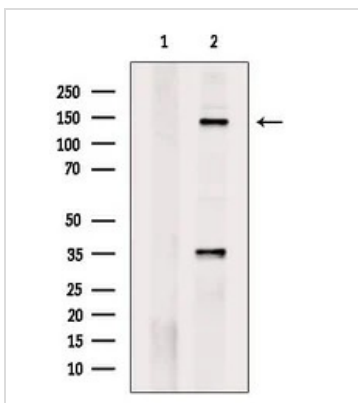
GTX02868 WB Image

WB analysis of extracts from mouse lung and rat kidney using GTX02868 c-Met (phospho Tyr1234) antibody. -/+ means absence or presence of N peptide(non-phospho peptide) and P peptide(phospho peptide).



GTX02868 ICC/IF Image

ICC/IF analysis of PFA-fixed NIH-3T3 cells using GTX02868 c-Met (phospho Tyr1234) antibody.
Permeabilization : 0.1% Triton X-100
Dilution : 1:200



GTX02868 WB Image

WB analysis of extracts from heat-shock treated EC304 cells using GTX02868 c-Met (phospho Tyr1234) antibody. The lane on the left was treated with blocking peptide.



For full product information, images and publications, please visit our [website](#).