



# SZABO SCANDIC

Part of Europa Biosite

## Produktinformation



Forschungsprodukte & Biochemikalien



Zellkultur & Verbrauchsmaterial



Diagnostik & molekulare Diagnostik



Laborgeräte & Service

Weitere Information auf den folgenden Seiten!  
See the following pages for more information!



### Lieferung & Zahlungsart

siehe unsere [Liefer- und Versandbedingungen](#)

### Zuschläge

- Mindermengenzuschlag
- Trockeneiszuschlag
- Gefahrgutzuschlag
- Expressversand

### SZABO-SCANDIC HandelsgmbH

Quellenstraße 110, A-1100 Wien

T. +43(0)1 489 3961-0

F. +43(0)1 489 3961-7

[mail@szabo-scandic.com](mailto:mail@szabo-scandic.com)

[www.szabo-scandic.com](http://www.szabo-scandic.com)

[linkedin.com/company/szaboscandic](https://www.linkedin.com/company/szaboscandic) 

## SDF1 antibody

Cat. No. GTX02876

|                    |                   |
|--------------------|-------------------|
| <b>Host</b>        | Rabbit            |
| <b>Clonality</b>   | Polyclonal        |
| <b>Isotype</b>     | IgG               |
| <b>Application</b> | WB, IHC-P, ELISA  |
| <b>Reactivity</b>  | Human, Mouse, Rat |

Package  
100 µg

## APPLICATION

## Application Note

\*Optimal dilutions/concentrations should be determined by the researcher.

| Suggested dilution | Recommended dilution |
|--------------------|----------------------|
| WB                 | 0.1-0.5µg/ml         |
| IHC-P              | 0.5-1µg/ml           |
| ELISA              | 0.1-0.5µg/ml         |

Not tested in other applications.

**Calculated MW** 11 kDa. ([Note](#))

## PROPERTIES

|                      |  |
|----------------------|--|
| <b>Form</b>          | Liquid   |
| <b>Buffer</b>        | 4mg Trehalose, 0.9mg NaCl, 0.2mg Na <sub>2</sub> HPO <sub>4</sub>  |
| <b>Preservative</b>  | 0.05mg Sodium azide  |
| <b>Storage</b>       | Store as concentrated solution. Centrifuge briefly prior to opening vial. For short-term storage (1-2 weeks), store at 4°C. For long-term storage, aliquot and store at -20°C or below. Avoid multiple freeze-thaw cycles. |
| <b>Concentration</b> | 0.5-1 mg/ml (Please refer to the vial label for the specific concentration.)   |
| <b>Immunogen</b>     | E. coli-derived human CXCL12 recombinant protein (Position: V24-M93).  |
| <b>Purification</b>  | Purified by affinity chromatography  |
| <b>Conjugation</b>   | Unconjugated   |

## Note

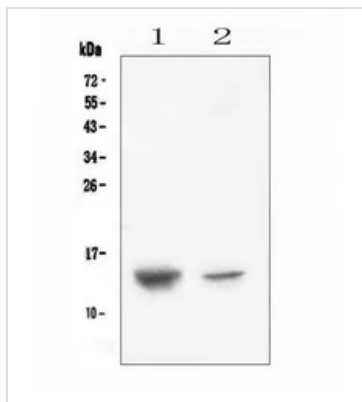
For laboratory research use only. Not for any clinical, therapeutic, or diagnostic use in humans or animals. Not for animal or human consumption.

Purchasers shall not, and agree not to enable third parties to, analyze, copy, reverse engineer or otherwise attempt to determine the structure or sequence of the product.



For full product information, images and publications, please visit our [website](#).

## DATA IMAGES

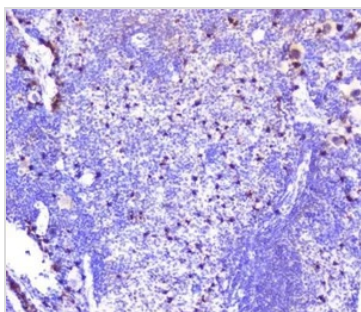
**GTX02876 WB Image**

WB analysis of various samples using GTX02876 SDF1 antibody.

Lane 1 : human placenta tissue lysate

Lane 2 : A431 whole cell lysate

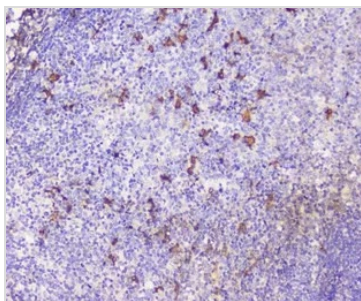
Dilution : 0.5 µg/ml

**GTX02876 IHC-P Image**

IHC-P analysis of mouse spleen tissue using GTX02876 SDF1 antibody.

Antigen retrieval : Heat mediated antigen retrieval was performed in citrate buffer (pH6, epitope retrieval solution) for 20 mins

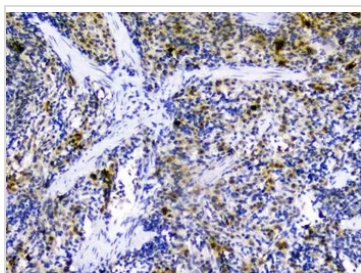
Dilution : 1µg/ml

**GTX02876 IHC-P Image**

IHC-P analysis of human tonsil tissue using GTX02876 SDF1 antibody.

Antigen retrieval : Heat mediated antigen retrieval was performed in citrate buffer (pH6, epitope retrieval solution) for 20 mins

Dilution : 1µg/ml

**GTX02876 IHC-P Image**

IHC-P analysis of rat spleen tissue using GTX02876 SDF1 antibody.

Antigen retrieval : Heat mediated antigen retrieval was performed in citrate buffer (pH6, epitope retrieval solution) for 20 mins

Dilution : 1µg/ml



For full product information, images and publications, please visit our [website](#).