



# SZABO SCANDIC

Part of Europa Biosite

## Produktinformation



Forschungsprodukte & Biochemikalien



Zellkultur & Verbrauchsmaterial



Diagnostik & molekulare Diagnostik



Laborgeräte & Service

Weitere Information auf den folgenden Seiten!  
See the following pages for more information!



### Lieferung & Zahlungsart

siehe unsere [Liefer- und Versandbedingungen](#)

### Zuschläge

- Mindermengenzuschlag
- Trockeneiszuschlag
- Gefahrgutzuschlag
- Expressversand

### SZABO-SCANDIC HandelsgmbH

Quellenstraße 110, A-1100 Wien

T. +43(0)1 489 3961-0

F. +43(0)1 489 3961-7

[mail@szabo-scandic.com](mailto:mail@szabo-scandic.com)

[www.szabo-scandic.com](http://www.szabo-scandic.com)

[linkedin.com/company/szaboscandic](https://www.linkedin.com/company/szaboscandic) 

## CD22 antibody [S-HCL-1] (PE)

**Cat. No. GTX02878-08**

<b>Host</b>	Mouse
<b>Clonality</b>	Monoclonal
<b>Isotype</b>	IgG2b
<b>Application</b>	FACS
<b>Reactivity</b>	Human

**Package**  
100 test

## APPLICATION

**Application Note**

\*Optimal dilutions/concentrations should be determined by the researcher.

Suggested dilution	Recommended dilution
FACS	10 $\mu$ l in 100 $\mu$ l of whole blood or 10 <sup>6</sup> cells in a suspension

Not tested in other applications.

**Calculated MW** 95 kDa. ([Note](#))

**Product Note**

The mouse monoclonal antibody S-HCL-1 (also known as S-HCL1) recognizes an extracellular epitope of CD22 (BL-CAM), a 130 kDa type I transmembrane glycoprotein (immunoglobulin superfamily) expressed in the cytoplasm of pro-B and pre-B lymphocytes, and on the surface of mature and activated B lymphocytes; it is lost on plasma cells, peripheral blood T lymphocytes, granulocytes and monocytes.

## PROPERTIES

<b>Form</b>	Liquid
<b>Buffer</b>	PBS
<b>Preservative</b>	15mM Sodium azide
<b>Storage</b>	Store as concentrated solution. Centrifuge briefly prior to opening vial. Store at 4°C. DO NOT FREEZE. Protect from light.
<b>Immunogen</b>	Whole hairy cell leukemia cells and membrane preparation
<b>Purification</b>	Purified by size-exclusion chromatography
<b>Conjugation</b>	Phycoerythrin (PE)

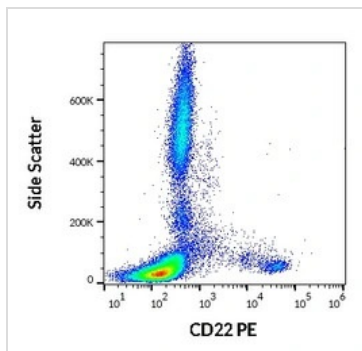
**Note**

For laboratory research use only. Not for any clinical, therapeutic, or diagnostic use in humans or animals. Not for animal or human consumption.

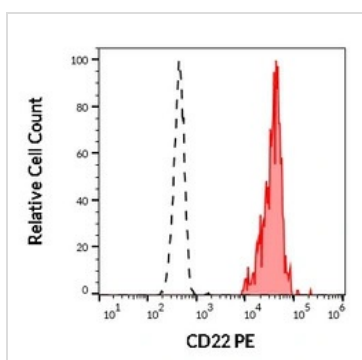
Purchasers shall not, and agree not to enable third parties to, analyze, copy, reverse engineer or otherwise attempt to determine the structure or sequence of the product.



For full product information, images and publications, please visit our [website](#).

**DATA IMAGES**

**GTX02878-08 FACS Image**

FACS analysis of human peripheral whole blood using GTX02878-08 CD22 antibody [S-HCL-1] (PE).  
 Dilution : 10  $\mu$ l in 100  $\mu$ l of peripheral whole blood


**GTX02878-08 FACS Image**

FACS analysis of human peripheral whole blood using GTX02878-08 CD22 antibody [S-HCL-1] (PE).  
 Red-filled : human CD22 positive lymphocytes from human neutrophil granulocytes  
 black-dashed : human neutrophil granulocytes  
 Dilution : 10  $\mu$ l in 100  $\mu$ l of peripheral whole blood



For full product information, images and publications, please visit our [website](#).