



SZABO SCANDIC

Part of Europa Biosite

Produktinformation



Forschungsprodukte & Biochemikalien



Zellkultur & Verbrauchsmaterial



Diagnostik & molekulare Diagnostik



Laborgeräte & Service

Weitere Information auf den folgenden Seiten!
See the following pages for more information!



Lieferung & Zahlungsart

siehe unsere [Liefer- und Versandbedingungen](#)

Zuschläge

- Mindermengenzuschlag
- Trockeneiszuschlag
- Gefahrgutzuschlag
- Expressversand

SZABO-SCANDIC HandelsgmbH

Quellenstraße 110, A-1100 Wien

T. +43(0)1 489 3961-0

F. +43(0)1 489 3961-7

mail@szabo-scandic.com

www.szabo-scandic.com

[linkedin.com/company/szaboscandic](https://www.linkedin.com/company/szaboscandic) 

IRF3 (phospho Ser396) antibody

Cat. No. GTX02883

Host	Rabbit
Clonality	Polyclonal
Isotype	IgG
Application	WB, ICC/IF, IHC-P, ELISA
Reactivity	Human, Mouse, Rat

Package
100 µl

APPLICATION

Application Note

*Optimal dilutions/concentrations should be determined by the researcher.

Suggested dilution	Recommended dilution
WB	1:500-1:2000
ICC/IF	1:100-1:500
IHC-P	1:50-1:200
ELISA	Assay dependent

Not tested in other applications.

Calculated MW 47 kDa. ([Note](#))

PROPERTIES

Form	Liquid
Buffer	PBS pH7.4, 150mM NaCl, 50% Glycerol
Preservative	0.02% Sodium azide
Storage	Store as concentrated solution. Centrifuge briefly prior to opening vial. For short-term storage (1-2 weeks), store at 4°C. For long-term storage, aliquot and store at -20°C or below. Avoid multiple freeze-thaw cycles.
Concentration	1 mg/ml (Please refer to the vial label for the specific concentration.)
Immunogen	A synthesized peptide derived from human IRF3 around the phosphorylation site of Ser396.
Purification	Purified by affinity purification via sequential chromatography on phospho-peptide and non-phospho-peptide affinity columns From serum
Conjugation	Unconjugated

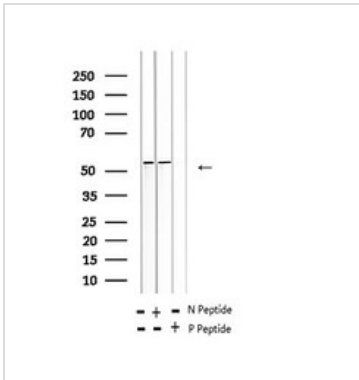


For full product information, images and publications, please visit our [website](#).

For laboratory research use only. Not for any clinical, therapeutic, or diagnostic use in humans or animals. Not for animal or human consumption.

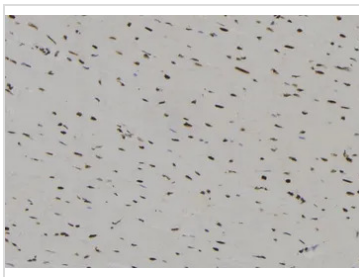
Note
 Purchasers shall not, and agree not to enable third parties to, analyze, copy, reverse engineer or otherwise attempt to determine the structure or sequence of the product.

DATA IMAGES



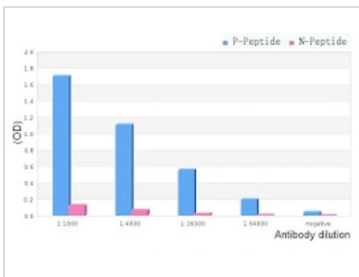
GTX02883 WB Image

WB analysis of plpC-transfected HT29 cell lysate using GTX02883 IRF3 (phospho Ser396) antibody.
 N peptide : Non-phospho peptide
 P peptide : Phospho peptide



GTX02883 IHC-P Image

IHC-P analysis of rat heart tissue using GTX02883 IRF3 (phospho Ser396) antibody.
 Antigen retrieval : Heat mediated antigen retrieval step in citrate buffer was performed
 Dilution : 1:100



GTX02883 ELISA Image

ELISA analysis of phospho- and non-phospho-immunogen peptide using GTX02883 IRF3 (phospho Ser396) antibody.
 P-peptide : phospho-peptide
 N-peptide : non-phospho-peptide
 Peptides concentration : 1µg/ml



GTX02883 IHC-P Image

IHC-P analysis of mouse heart tissue using GTX02883 IRF3 (phospho Ser396) antibody.
 Antigen retrieval : Heat mediated antigen retrieval step in citrate buffer was performed
 Dilution : 1:100



For full product information, images and publications, please visit our [website](#).