



# SZABO SCANDIC

Part of Europa Biosite

## Produktinformation



Forschungsprodukte & Biochemikalien



Zellkultur & Verbrauchsmaterial



Diagnostik & molekulare Diagnostik



Laborgeräte & Service

Weitere Information auf den folgenden Seiten!  
See the following pages for more information!



### Lieferung & Zahlungsart

siehe unsere [Liefer- und Versandbedingungen](#)

### Zuschläge

- Mindermengenzuschlag
- Trockeneiszuschlag
- Gefahrgutzuschlag
- Expressversand

### SZABO-SCANDIC HandelsgmbH

Quellenstraße 110, A-1100 Wien

T. +43(0)1 489 3961-0

F. +43(0)1 489 3961-7

[mail@szabo-scandic.com](mailto:mail@szabo-scandic.com)

[www.szabo-scandic.com](http://www.szabo-scandic.com)

[linkedin.com/company/szaboscandic](https://www.linkedin.com/company/szaboscandic) 

## TAB2 antibody

**Cat. No. GTX02891**

<b>Host</b>	Rabbit
<b>Clonality</b>	Polyclonal
<b>Isotype</b>	IgG
<b>Application</b>	WB, IHC-P, FACS, ELISA
<b>Reactivity</b>	Human

**Package**  
100 µl

## APPLICATION

**Application Note**

\*Optimal dilutions/concentrations should be determined by the researcher.

Suggested dilution	Recommended dilution
WB	0.25-0.5µg/ml
IHC-P	2-5µg/ml
FACS	1-3µg/1x10 <sup>6</sup> cells
ELISA	0.1-0.5µg/ml

Not tested in other applications.

**Calculated MW** 76 kDa. ([Note](#))

## PROPERTIES

<b>Form</b>	Liquid
<b>Buffer</b>	4mg Trehalose, 0.9mg NaCl, 0.2mg Na <sub>2</sub> HPO <sub>4</sub>
<b>Preservative</b>	0.01mg Sodium azide
<b>Storage</b>	Store as concentrated solution. Centrifuge briefly prior to opening vial. For short-term storage (1-2 weeks), store at 4°C. For long-term storage, aliquot and store at -20°C or below. Avoid multiple freeze-thaw cycles.
<b>Concentration</b>	0.5 mg/ml (Please refer to the vial label for the specific concentration.)
<b>Immunogen</b>	E.coli-derived human TAB2 recombinant protein (Position: Q169-K522).
<b>Purification</b>	Purified by antigen-affinity chromatography
<b>Conjugation</b>	Unconjugated

**Note**

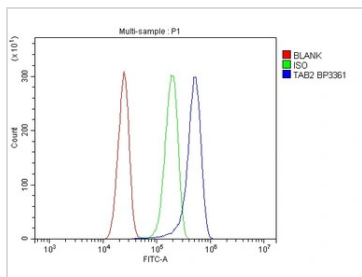
For laboratory research use only. Not for any clinical, therapeutic, or diagnostic use in humans or animals. Not for animal or human consumption.

Purchasers shall not, and agree not to enable third parties to, analyze, copy, reverse engineer or otherwise attempt to determine the structure or sequence of the product.



For full product information, images and publications, please visit our [website](#).

## DATA IMAGES

**GTX02891 FACS Image**

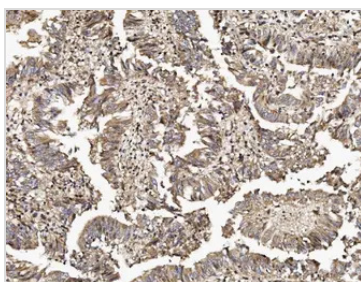
FACS analysis of U87 cells using GTX02891 TAB2 antibody.

Blue : Primary antibody

Green : Isotype control

Red : Unlabelled cells

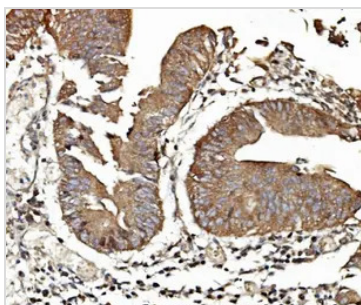
Antibody amount : 1 $\mu$ g/1x10<sup>6</sup> cells

**GTX02891 IHC-P Image**

IHC-P analysis of human rectal cancer tissue using GTX02891 TAB2 antibody.

Antigen retrieval : Heat mediated antigen retrieval was performed in EDTA buffer (pH8.0, epitope retrieval solution)

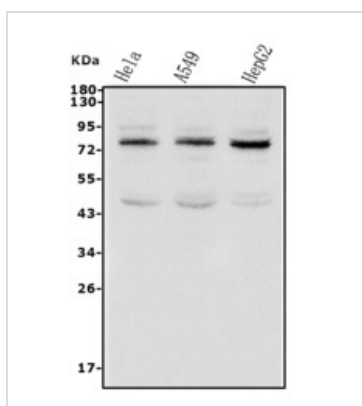
Dilution : 2 $\mu$ g/ml

**GTX02891 IHC-P Image**

IHC-P analysis of human rectal cancer tissue using GTX02891 TAB2 antibody.

Antigen retrieval : Heat mediated antigen retrieval was performed in EDTA buffer (pH8.0, epitope retrieval solution)

Dilution : 2 $\mu$ g/ml

**GTX02891 WB Image**

WB analysis of various samples using GTX02891 TAB2 antibody.

Lane 1 : HeLa whole cell lysate

Lane 2 : A549 whole cell lysate

Lane 3 : HepG2 whole cell lysate

Dilution : 0.5  $\mu$ g/ml

Loading : 50 $\mu$ g per lane



For full product information, images and publications, please visit our [website](#).