



SZABO SCANDIC

Part of Europa Biosite

Produktinformation



Forschungsprodukte & Biochemikalien



Zellkultur & Verbrauchsmaterial



Diagnostik & molekulare Diagnostik



Laborgeräte & Service

Weitere Information auf den folgenden Seiten!
See the following pages for more information!



Lieferung & Zahlungsart

siehe unsere [Liefer- und Versandbedingungen](#)

Zuschläge

- Mindermengenzuschlag
- Trockeneiszuschlag
- Gefahrgutzuschlag
- Expressversand

SZABO-SCANDIC HandelsgmbH

Quellenstraße 110, A-1100 Wien

T. +43(0)1 489 3961-0

F. +43(0)1 489 3961-7

mail@szabo-scandic.com

www.szabo-scandic.com

[linkedin.com/company/szaboscandic](https://www.linkedin.com/company/szaboscandic) 

Apolipoprotein E ELISA pair [E981/E887]

Cat. No. GTX03051

Application ELISA, Sandwich ELISA

Reactivity Human, Monkey

Package
1 pair

PRODUCT

Product Content

Cat No.	Type	Host	Conjugation	Package
GTX02905-02	Detection antibody	Mouse	Biotin	250 µg
GTX02906	Capture antibody	Mouse	Unconjugated	250 µg

PROPERTIES

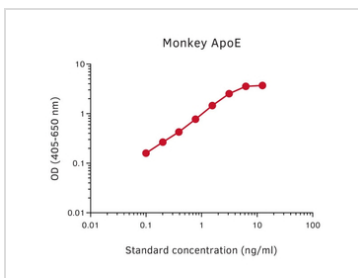
Form Liquid

Storage Store as concentrated solution. Centrifuge briefly prior to opening vial. For short-term storage (1-2 weeks), store at 4°C. For long-term storage, aliquot and store at -20°C or below. Avoid multiple freeze-thaw cycles.

Note For laboratory research use only. Not for any clinical, therapeutic, or diagnostic use in humans or animals. Not for animal or human consumption.

Purchasers shall not, and agree not to enable third parties to, analyze, copy, reverse engineer or otherwise attempt to determine the structure or sequence of the product.

DATA IMAGES



GTX03051 ELISA Image

Sandwich ELISA analysis of monkey apoE protein using GTX02906 Apolipoprotein E antibody [E981] as coating antibody and GTX02905-02 Apolipoprotein E antibody [E887] (Biotin) as detecting antibody. Substrate : pNPP



For full product information, images and publications, please visit our [website](#).