



# SZABO SCANDIC

Part of Europa Biosite

## Produktinformation



Forschungsprodukte & Biochemikalien



Zellkultur & Verbrauchsmaterial



Diagnostik & molekulare Diagnostik



Laborgeräte & Service

Weitere Information auf den folgenden Seiten!  
See the following pages for more information!



### Lieferung & Zahlungsart

siehe unsere [Liefer- und Versandbedingungen](#)

### Zuschläge

- Mindermengenzuschlag
- Trockeneiszuschlag
- Gefahrgutzuschlag
- Expressversand

### SZABO-SCANDIC HandelsgmbH

Quellenstraße 110, A-1100 Wien

T. +43(0)1 489 3961-0

F. +43(0)1 489 3961-7

[mail@szabo-scandic.com](mailto:mail@szabo-scandic.com)

[www.szabo-scandic.com](http://www.szabo-scandic.com)

[linkedin.com/company/szaboscandic](https://www.linkedin.com/company/szaboscandic) 

## SMAD2 (phospho Ser250) antibody [GT1291]

**Cat. No. GTX03203**

<b>Host</b>	Rabbit
<b>Clonality</b>	Monoclonal
<b>Isotype</b>	IgG
<b>Application</b>	WB
<b>Reactivity</b>	Human, Mouse

Reference ( 1 )  
 Package  
 100 µl

## APPLICATION

**Application Note**

\*Optimal dilutions/concentrations should be determined by the researcher.

Suggested dilution	Recommended dilution
WB	1:500 - 1:2000
Not tested in other applications.	

**Calculated MW** 52 kDa. ([Note](#))

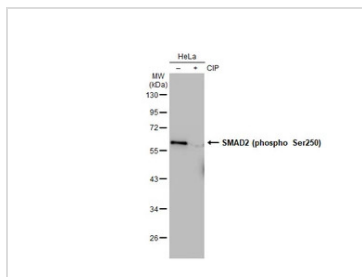
## PROPERTIES

<b>Form</b>	Liquid
<b>Buffer</b>	PBS pH7.3, 0.05% BSA, 50% Glycerol
<b>Preservative</b>	0.02% Sodium azide
<b>Storage</b>	Store as concentrated solution. Centrifuge briefly prior to opening vial. For short-term storage (1-2 weeks), store at 4°C. For long-term storage, aliquot and store at -20°C or below. Avoid multiple freeze-thaw cycles.
<b>Concentration</b>	0.56 mg/ml (Please refer to the vial label for the specific concentration.)
<b>Immunogen</b>	A phospho specific peptide corresponding to residues surrounding S250 of human Smad2.
<b>Purification</b>	Purified by affinity chromatography
<b>Conjugation</b>	Unconjugated
<b>Note</b>	For laboratory research use only. Not for any clinical, therapeutic, or diagnostic use in humans or animals. Not for animal or human consumption.  Purchasers shall not, and agree not to enable third parties to, analyze, copy, reverse engineer or otherwise attempt to determine the structure or sequence of the product.



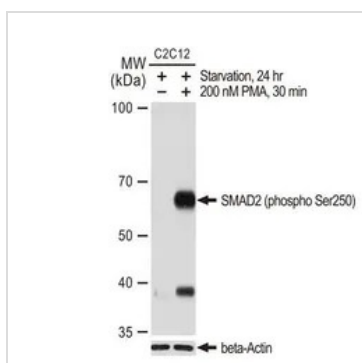
For full product information, images and publications, please visit our [website](#).

DATA IMAGES



**GTX03203 WB Image**

Untreated (-) and treated (+) HeLa whole cell extracts (30 µg) were separated by 10% SDS-PAGE, and the membrane was blotted with SMAD2 (phospho Ser250) antibody [GT1291] (GTX03203) diluted at 1:500. The HRP-conjugated anti-rabbit IgG antibody (GTX213110-01) was used to detect the primary antibody.

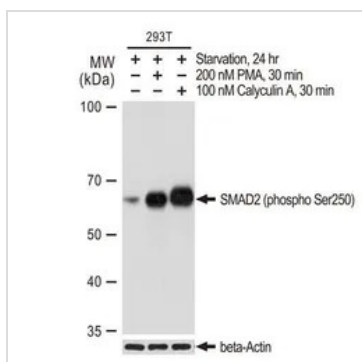


**GTX03203 WB Image**

WB analysis of C2C12 cells were treated by PMA/TPA (200 nM) at 37°C for 30 minutes after serum-starvation overnight using GTX03203 SMAD2 (phospho Ser250) antibody [GT1291].

Dilution : 1:1000

Loading : 25µg per lane



**GTX03203 WB Image**

WB analysis of 293T cells were treated by PMA/TPA (200 nM) at 37°C for 30 minutes after serum-starvation overnight or treated by Calyculin A (100 nM) at 37°C for 30 minutes after serum-starvation overnight using GTX03203 SMAD2 (phospho Ser250) antibody [GT1291].

Dilution : 1:1000

Loading : 25µg per lane



For full product information, images and publications, please visit our [website](#).