



SZABO SCANDIC

Part of Europa Biosite

Produktinformation



Forschungsprodukte & Biochemikalien



Zellkultur & Verbrauchsmaterial



Diagnostik & molekulare Diagnostik



Laborgeräte & Service

Weitere Information auf den folgenden Seiten!
See the following pages for more information!



Lieferung & Zahlungsart

siehe unsere [Liefer- und Versandbedingungen](#)

Zuschläge

- Mindermengenzuschlag
- Trockeneiszuschlag
- Gefahrgutzuschlag
- Expressversand

SZABO-SCANDIC HandelsgmbH

Quellenstraße 110, A-1100 Wien

T. +43(0)1 489 3961-0

F. +43(0)1 489 3961-7

mail@szabo-scandic.com

www.szabo-scandic.com

[linkedin.com/company/szaboscandic](https://www.linkedin.com/company/szaboscandic) 

Tau (phospho Ser396) antibody [GT1292]

Cat. No. GTX03204

Host	Rabbit
Clonality	Monoclonal
Isotype	IgG
Application	WB, IHC-P
Reactivity	Human, Mouse, Rat

Package
100 µl

APPLICATION

Application Note

*Optimal dilutions/concentrations should be determined by the researcher.

Suggested dilution	Recommended dilution
WB	1:500 - 1:2000
IHC-P	1:50 - 1:200

Not tested in other applications.

Calculated MW 79 kDa. ([Note](#))

PROPERTIES

Form	Liquid
Buffer	PBS pH7.3, 0.05% BSA, 50% Glycerol
Preservative	0.02% Sodium azide
Storage	Store as concentrated solution. Centrifuge briefly prior to opening vial. For short-term storage (1-2 weeks), store at 4°C. For long-term storage, aliquot and store at -20°C or below. Avoid multiple freeze-thaw cycles.
Concentration	0.22 mg/ml (Please refer to the vial label for the specific concentration.)
Immunogen	A phospho specific peptide corresponding to residues surrounding S396 of human Tau.
Purification	Purified by affinity chromatography
Conjugation	Unconjugated

Note

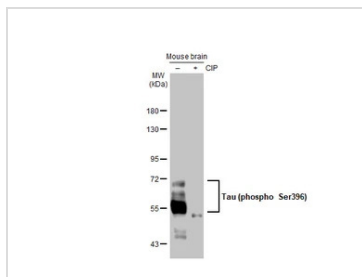
For laboratory research use only. Not for any clinical, therapeutic, or diagnostic use in humans or animals. Not for animal or human consumption.

Purchasers shall not, and agree not to enable third parties to, analyze, copy, reverse engineer or otherwise attempt to determine the structure or sequence of the product.

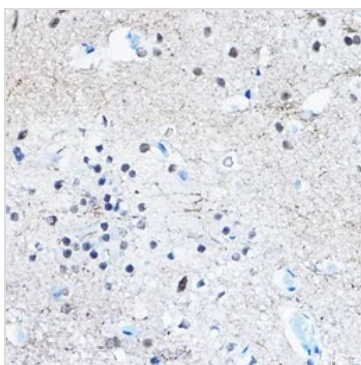


For full product information, images and publications, please visit our [website](#).

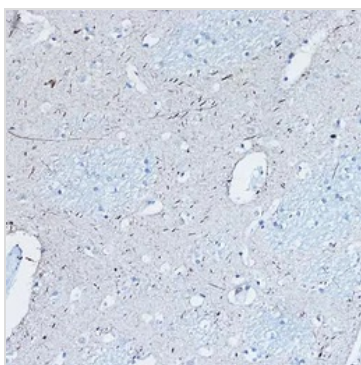
DATA IMAGES

**GTX03204 WB Image**

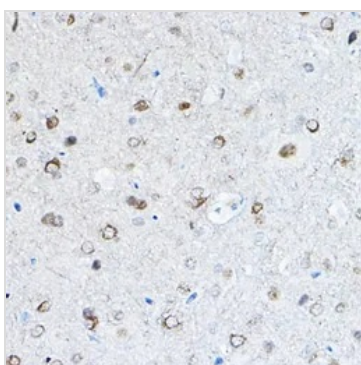
Untreated (-) and treated (+) Mouse tissue extracts (50 µg) were separated by 7.5% SDS-PAGE, and the membrane was blotted with Tau (phospho Ser396) antibody [GT1292] (GTX03204) diluted at 1:500. The HRP-conjugated anti-rabbit IgG antibody (GTX213110-01) was used to detect the primary antibody.

**GTX03204 IHC-P Image**

IHC-P analysis of rat brain tissue section using GTX03204 Tau (phospho Ser396) antibody [GT1292].
Dilution : 1:100

**GTX03204 IHC-P Image**

IHC-P analysis of human brain tissue section using GTX03204 Tau (phospho Ser396) antibody [GT1292].
Dilution : 1:100

**GTX03204 IHC-P Image**

IHC-P analysis of mouse brain tissue section using GTX03204 Tau (phospho Ser396) antibody [GT1292].
Dilution : 1:100



For full product information, images and publications, please visit our [website](#).