



SZABO SCANDIC

Part of Europa Biosite

Produktinformation



Forschungsprodukte & Biochemikalien



Zellkultur & Verbrauchsmaterial



Diagnostik & molekulare Diagnostik



Laborgeräte & Service

Weitere Information auf den folgenden Seiten!
See the following pages for more information!



Lieferung & Zahlungsart

siehe unsere [Liefer- und Versandbedingungen](#)

Zuschläge

- Mindermengenzuschlag
- Trockeneiszuschlag
- Gefahrgutzuschlag
- Expressversand

SZABO-SCANDIC HandelsgmbH

Quellenstraße 110, A-1100 Wien

T. +43(0)1 489 3961-0

F. +43(0)1 489 3961-7

mail@szabo-scandic.com

www.szabo-scandic.com

[linkedin.com/company/szaboscandic](https://www.linkedin.com/company/szaboscandic) 

MTCO2 antibody [GT1293]

Cat. No. GTX03205

Host	Rabbit
Clonality	Monoclonal
Isotype	IgG
Application	WB, IHC-P
Reactivity	Human

Package
100 µl

APPLICATION

Application Note

*Optimal dilutions/concentrations should be determined by the researcher.

Suggested dilution	Recommended dilution
WB	1:500 - 1:2000
IHC-P	1:50 - 1:200

Not tested in other applications.

Calculated MW 26 kDa. ([Note](#))

PROPERTIES

Form	Liquid
Buffer	PBS pH7.3, 0.05% BSA, 50% Glycerol
Preservative	0.02% Sodium azide
Storage	Store as concentrated solution. Centrifuge briefly prior to opening vial. For short-term storage (1-2 weeks), store at 4°C. For long-term storage, aliquot and store at -20°C or below. Avoid multiple freeze-thaw cycles.
Concentration	0.33 mg/ml (Please refer to the vial label for the specific concentration.)
Immunogen	A synthesized peptide derived from human MTCO2.
Purification	Purified by affinity chromatography
Conjugation	Unconjugated

Note

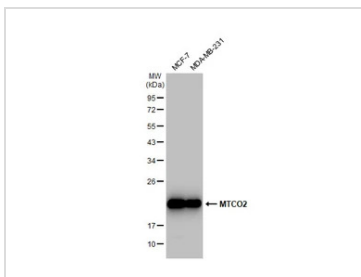
For laboratory research use only. Not for any clinical, therapeutic, or diagnostic use in humans or animals. Not for animal or human consumption.

Purchasers shall not, and agree not to enable third parties to, analyze, copy, reverse engineer or otherwise attempt to determine the structure or sequence of the product.



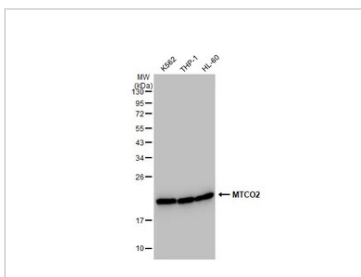
For full product information, images and publications, please visit our [website](#).

DATA IMAGES



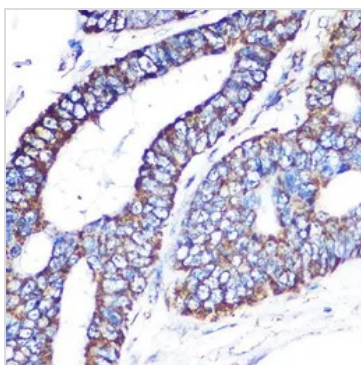
GTX03205 WB Image

Various whole cell extracts (30 µg) were separated by 12% SDS-PAGE, and the membrane was blotted with MTCO2 antibody [GT1293] (GTX03205) diluted at 1:1000. The HRP-conjugated anti-rabbit IgG antibody (GTX213110-01) was used to detect the primary antibody.



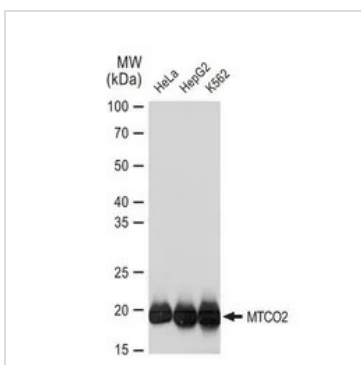
GTX03205 WB Image

Various whole cell extracts (30 µg) were separated by 12% SDS-PAGE, and the membrane was blotted with MTCO2 antibody [GT1293] (GTX03205) diluted at 1:1000. The HRP-conjugated anti-rabbit IgG antibody (GTX213110-01) was used to detect the primary antibody.



GTX03205 IHC-P Image

IHC-P analysis of human colon carcinoma tissue section using GTX03205 MTCO2 antibody [GT1293].
Dilution : 1:100



GTX03205 WB Image

WB analysis of various samples using GTX03205 MTCO2 antibody [GT1293].
Dilution : 1:1000
Loading : 25µg per lane



For full product information, images and publications, please visit our [website](#).