



SZABO SCANDIC

Part of Europa Biosite

Produktinformation



Forschungsprodukte & Biochemikalien



Zellkultur & Verbrauchsmaterial



Diagnostik & molekulare Diagnostik



Laborgeräte & Service

Weitere Information auf den folgenden Seiten!
See the following pages for more information!



Lieferung & Zahlungsart

siehe unsere [Liefer- und Versandbedingungen](#)

Zuschläge

- Mindermengenzuschlag
- Trockeneiszuschlag
- Gefahrgutzuschlag
- Expressversand

SZABO-SCANDIC HandelsgmbH

Quellenstraße 110, A-1100 Wien

T. +43(0)1 489 3961-0

F. +43(0)1 489 3961-7

mail@szabo-scandic.com

www.szabo-scandic.com

[linkedin.com/company/szaboscandic](https://www.linkedin.com/company/szaboscandic) 

RPB1 CTD (phospho Ser2) antibody [GT1302]

Cat. No. GTX03214

Host	Rabbit
Clonality	Monoclonal
Isotype	IgG
Application	WB
Reactivity	Human, Mouse, Rat

Package
100 µl

APPLICATION

Application Note

*Optimal dilutions/concentrations should be determined by the researcher.

Suggested dilution	Recommended dilution
WB	1:500 - 1:2000

Not tested in other applications.

Calculated MW 217 kDa. ([Note](#))

PROPERTIES

Form	Liquid
Buffer	PBS pH7.3, 0.05% BSA, 50% Glycerol
Preservative	0.02% Sodium azide
Storage	Store as concentrated solution. Centrifuge briefly prior to opening vial. For short-term storage (1-2 weeks), store at 4°C. For long-term storage, aliquot and store at -20°C or below. Avoid multiple freeze-thaw cycles.
Concentration	0.75 mg/ml (Please refer to the vial label for the specific concentration.)
Immunogen	A phospho specific peptide corresponding to residues surrounding S2 of human POLR2A carboxy-terminal domain (CTD) heptapeptide repeat YSPTSPS.
Purification	Purified by affinity chromatography
Conjugation	Unconjugated

Note

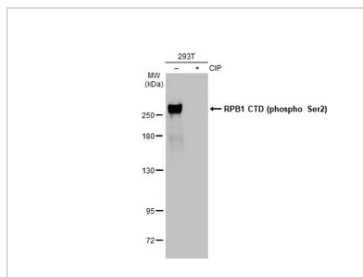
For laboratory research use only. Not for any clinical, therapeutic, or diagnostic use in humans or animals. Not for animal or human consumption.

Purchasers shall not, and agree not to enable third parties to, analyze, copy, reverse engineer or otherwise attempt to determine the structure or sequence of the product.



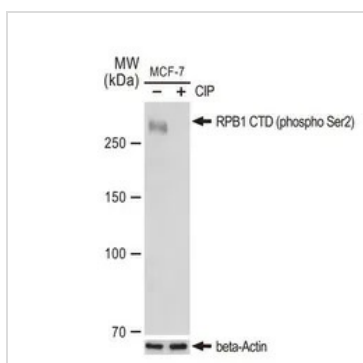
For full product information, images and publications, please visit our [website](#).

DATA IMAGES



GTX03214 WB Image

Untreated (-) and treated (+) 293T whole cell extracts (30 µg) were separated by 5% SDS-PAGE, and the membrane was blotted with RPB1 CTD (phospho Ser2) antibody [GT1302] (GTX03214) diluted at 1:500. The HRP-conjugated anti-rabbit IgG antibody (GTX213110-01) was used to detect the primary antibody.

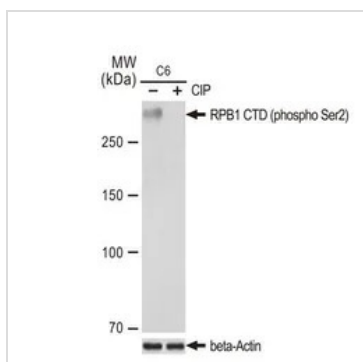


GTX03214 WB Image

WB analysis of MCF7 cells were treated by CIP(20uL/400ul) at 37°C for 1 hour using GTX03214 RPB1 CTD (phospho Ser2) antibody [GT1302].

Dilution : 1:1000

Loading : 25µg per lane

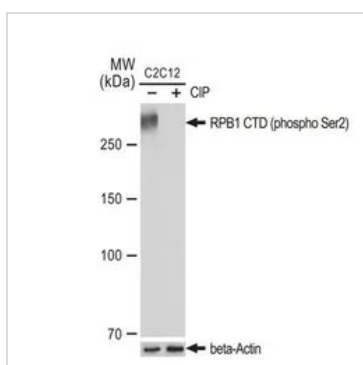


GTX03214 WB Image

WB analysis of C6 cells were treated by CIP(20uL/400ul) at 37°C for 1 hour using GTX03214 RPB1 CTD (phospho Ser2) antibody [GT1302].

Dilution : 1:1000

Loading : 25µg per lane



GTX03214 WB Image

WB analysis of C2C12 cells were treated by CIP(20uL/400ul) at 37°C for 1 hour using GTX03214 RPB1 CTD (phospho Ser2) antibody [GT1302].

Dilution : 1:1000

Loading : 25µg per lane



For full product information, images and publications, please visit our [website](#).