



SZABO SCANDIC

Part of Europa Biosite

Produktinformation



Forschungsprodukte & Biochemikalien



Zellkultur & Verbrauchsmaterial



Diagnostik & molekulare Diagnostik



Laborgeräte & Service

Weitere Information auf den folgenden Seiten!
See the following pages for more information!



Lieferung & Zahlungsart

siehe unsere [Liefer- und Versandbedingungen](#)

Zuschläge

- Mindermengenzuschlag
- Trockeneiszuschlag
- Gefahrgutzuschlag
- Expressversand

SZABO-SCANDIC HandelsgmbH

Quellenstraße 110, A-1100 Wien

T. +43(0)1 489 3961-0

F. +43(0)1 489 3961-7

mail@szabo-scandic.com

www.szabo-scandic.com

[linkedin.com/company/szaboscandic](https://www.linkedin.com/company/szaboscandic) 

TRPC1 antibody [GT1318]

Cat. No. GTX03230

Host	Rabbit
Clonality	Monoclonal
Isotype	IgG
Application	WB
Reactivity	Human, Mouse, Rat

Package
100 µl

APPLICATION

Application Note

*Optimal dilutions/concentrations should be determined by the researcher.

Suggested dilution	Recommended dilution
WB	1:500 - 1:2000

Not tested in other applications.

Calculated MW	91 kDa. (Note)
Observed MW	120-130 kDa. The observed M.W. is based on the following publication. PMID: 16956967, 20431989

PROPERTIES

Form	Liquid
Buffer	PBS pH7.3, 0.05% BSA, 50% Glycerol
Preservative	0.02% Sodium azide
Storage	Store as concentrated solution. Centrifuge briefly prior to opening vial. For short-term storage (1-2 weeks), store at 4°C. For long-term storage, aliquot and store at -20°C or below. Avoid multiple freeze-thaw cycles.
Concentration	0.93 mg/ml (Please refer to the vial label for the specific concentration.)
Immunogen	A synthesized peptide derived from human TRPC1.
Purification	Purified by affinity chromatography
Conjugation	Unconjugated

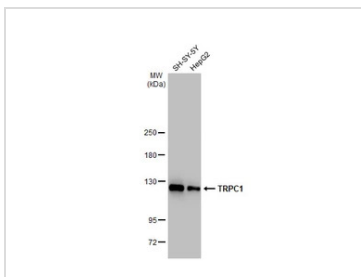
Note For laboratory research use only. Not for any clinical, therapeutic, or diagnostic use in humans or animals. Not for animal or human consumption.

Purchasers shall not, and agree not to enable third parties to, analyze, copy, reverse engineer or otherwise attempt to determine the structure or sequence of the product.



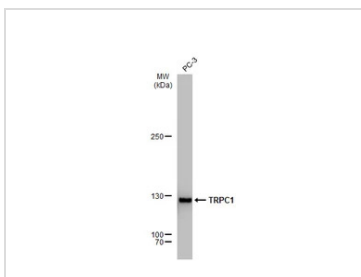
For full product information, images and publications, please visit our [website](#).

DATA IMAGES



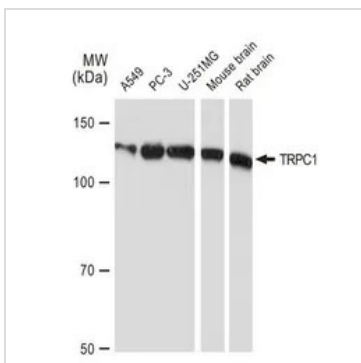
GTX03230 WB Image

Various whole cell extracts (30 µg) were separated by 5% SDS-PAGE, and the membrane was blotted with TRPC1 antibody [GT1318] (GTX03230) diluted at 1:1000. The HRP-conjugated anti-rabbit IgG antibody (GTX213110-01) was used to detect the primary antibody.
The observed M.W. is based on the publication: PMID: 16956967, and PMID:20431989



GTX03230 WB Image

Whole cell extract (30 µg) was separated by 5% SDS-PAGE, and the membrane was blotted with TRPC1 antibody [GT1318] (GTX03230) diluted at 1:1000. The HRP-conjugated anti-rabbit IgG antibody (GTX213110-01) was used to detect the primary antibody.
The observed M.W. is based on the publication: PMID: 16956967, and PMID:20431989



GTX03230 WB Image

WB analysis of various samples using GTX03230 TRPC1 antibody [GT1318].
Dilution : 1:1000
Loading : 25µg per lane



For full product information, images and publications, please visit our [website](#).