



# SZABO SCANDIC

Part of Europa Biosite

## Produktinformation



Forschungsprodukte & Biochemikalien



Zellkultur & Verbrauchsmaterial



Diagnostik & molekulare Diagnostik



Laborgeräte & Service

Weitere Information auf den folgenden Seiten!  
See the following pages for more information!



### Lieferung & Zahlungsart

siehe unsere [Liefer- und Versandbedingungen](#)

### Zuschläge

- Mindermengenzuschlag
- Trockeneiszuschlag
- Gefahrgutzuschlag
- Expressversand

### SZABO-SCANDIC HandelsgmbH

Quellenstraße 110, A-1100 Wien

T. +43(0)1 489 3961-0

F. +43(0)1 489 3961-7

[mail@szabo-scandic.com](mailto:mail@szabo-scandic.com)

[www.szabo-scandic.com](http://www.szabo-scandic.com)

[linkedin.com/company/szaboscandic](https://www.linkedin.com/company/szaboscandic) 

## MERTK antibody [GT1335]

**Cat. No. GTX03247**

<b>Host</b>	Rabbit
<b>Clonality</b>	Monoclonal
<b>Isotype</b>	IgG
<b>Application</b>	WB
<b>Reactivity</b>	Human

**Package**  
100 µl

## APPLICATION

**Application Note**

\*Optimal dilutions/concentrations should be determined by the researcher.

Suggested dilution	Recommended dilution
--------------------	----------------------

WB	1:500 - 1:2000
----	----------------

Not tested in other applications.

<b>Calculated MW</b>	110 kDa. ( <a href="#">Note</a> )
----------------------	-----------------------------------

<b>Observed MW</b>	180/140 kDa. The observed M.W. is based on the following publication. PMID: 25980499, 29530050
--------------------	--

## PROPERTIES

<b>Form</b>	Liquid
-------------	--------

<b>Buffer</b>	PBS pH7.3, 0.05% BSA, 50% Glycerol
---------------	------------------------------------

<b>Preservative</b>	0.02% Sodium azide
---------------------	--------------------

<b>Storage</b>	Store as concentrated solution. Centrifuge briefly prior to opening vial. For short-term storage (1-2 weeks), store at 4°C. For long-term storage, aliquot and store at -20°C or below. Avoid multiple freeze-thaw cycles.
----------------	--

<b>Concentration</b>	0.75 mg/ml (Please refer to the vial label for the specific concentration.)
----------------------	---

<b>Immunogen</b>	A synthesized peptide derived from human MERTK.
------------------	---

<b>Purification</b>	Purified by affinity chromatography
---------------------	-------------------------------------

<b>Conjugation</b>	Unconjugated
--------------------	--------------

**Note**

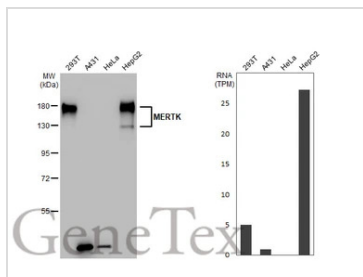
For laboratory research use only. Not for any clinical, therapeutic, or diagnostic use in humans or animals. Not for animal or human consumption.

Purchasers shall not, and agree not to enable third parties to, analyze, copy, reverse engineer or otherwise attempt to determine the structure or sequence of the product.



For full product information, images and publications, please visit our [website](#).

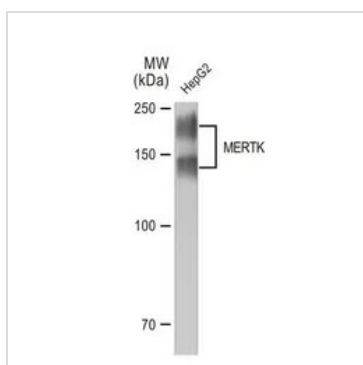
DATA IMAGES



**GTX03247 WB Image**

Various whole cell extracts (30 µg) were separated by 7.5% SDS-PAGE, and the membrane was blotted with MERTK antibody [GT1335] (GTX03247) diluted at 1:500. The HRP-conjugated anti-rabbit IgG antibody (GTX213110-01) was used to detect the primary antibody. Corresponding RNA expression data for the same cell lines are based on Human Protein Atlas program.

The observed M.W. is based on the publication: PMID: 25890499 and PMID:29530050



**GTX03247 WB Image**

WB analysis of HepG2 whole cell lysate using GTX03247 MERTK antibody [GT1335].

Dilution : 1:1000

Loading : 25µg per lane



For full product information, images and publications, please visit our [website](#).