



SZABO SCANDIC

Part of Europa Biosite

Produktinformation



Forschungsprodukte & Biochemikalien



Zellkultur & Verbrauchsmaterial



Diagnostik & molekulare Diagnostik



Laborgeräte & Service

Weitere Information auf den folgenden Seiten!
See the following pages for more information!



Lieferung & Zahlungsart

siehe unsere [Liefer- und Versandbedingungen](#)

Zuschläge

- Mindermengenzuschlag
- Trockeneiszuschlag
- Gefahrgutzuschlag
- Expressversand

SZABO-SCANDIC HandelsgmbH

Quellenstraße 110, A-1100 Wien

T. +43(0)1 489 3961-0

F. +43(0)1 489 3961-7

mail@szabo-scandic.com

www.szabo-scandic.com

[linkedin.com/company/szaboscandic](https://www.linkedin.com/company/szaboscandic) 

BMP5 antibody

Cat. No. GTX03273

Host	Rabbit
Clonality	Polyclonal
Isotype	IgG
Application	WB, IHC-P, FACS, ELISA
Reactivity	Human, Mouse, Rat

Package
100 µg

APPLICATION

Application Note

*Optimal dilutions/concentrations should be determined by the researcher.

Suggested dilution	Recommended dilution
WB	0.1-0.5µg/ml
IHC-P	0.5-1µg/ml
FACS	1-3µg/1x10 ⁶ cells
ELISA	0.1-0.5µg/ml

Not tested in other applications.

Calculated MW 52 kDa. ([Note](#))

PROPERTIES

Form	Liquid
Buffer	5mg BSA, 0.9mg NaCl, 0.2mg Na ₂ HPO ₄
Preservative	0.05mg Sodium azide
Storage	Store as concentrated solution. Centrifuge briefly prior to opening vial. For short-term storage (1-2 weeks), store at 4°C. For long-term storage, aliquot and store at -20°C or below. Avoid multiple freeze-thaw cycles.
Concentration	0.5 mg/ml (Please refer to the vial label for the specific concentration.)
Immunogen	A synthetic peptide corresponding to a sequence at the C-terminus of human BMP-5 (332-365aa HQDSSRMSSVGDYNTSEKQACKKHELYVSRDL), different from the related mouse sequence by three amino acids.
Purification	Purified by antigen-affinity chromatography
Conjugation	Unconjugated



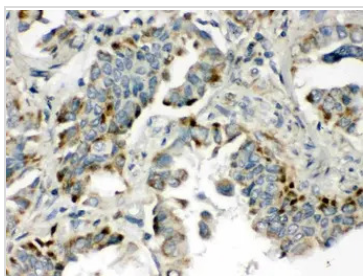
For full product information, images and publications, please visit our [website](#).

For laboratory research use only. Not for any clinical, therapeutic, or diagnostic use in humans or animals. Not for animal or human consumption.

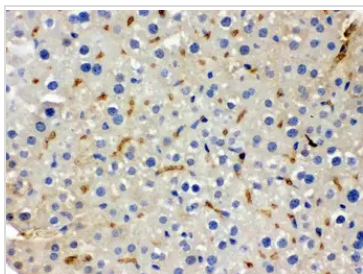
Note

Purchasers shall not, and agree not to enable third parties to, analyze, copy, reverse engineer or otherwise attempt to determine the structure or sequence of the product.

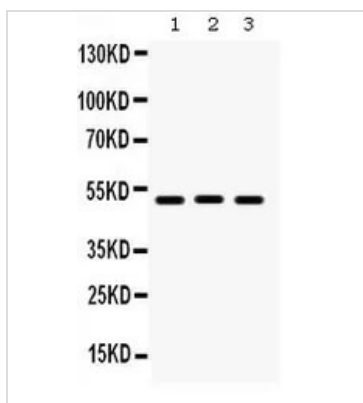
DATA IMAGES

**GTX03273 IHC-P Image**

IHC-P analysis of human lung cancer tissue using GTX03273 BMP5 antibody.

**GTX03273 IHC-P Image**

IHC-P analysis of mouse liver tissue using GTX03273 BMP5 antibody.

**GTX03273 WB Image**

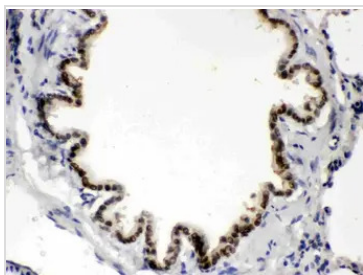
WB analysis of various sample lysates using GTX03273 BMP5 antibody.

Lane 1 : Rat Liver tissue lysate (50µg)

Lane 2 : Mouse Liver tissue lysate (50µg)

Lane 3 : A549 cell lysate (40µg)

Dilution : 0.5µg/ml

**GTX03273 IHC-P Image**

IHC-P analysis of rat lung tissue using GTX03273 BMP5 antibody.



For full product information, images and publications, please visit our [website](#).