



SZABO SCANDIC

Part of Europa Biosite

Produktinformation



Forschungsprodukte & Biochemikalien



Zellkultur & Verbrauchsmaterial



Diagnostik & molekulare Diagnostik



Laborgeräte & Service

Weitere Information auf den folgenden Seiten!
See the following pages for more information!



Lieferung & Zahlungsart

siehe unsere [Liefer- und Versandbedingungen](#)

Zuschläge

- Mindermengenzuschlag
- Trockeneiszuschlag
- Gefahrgutzuschlag
- Expressversand

SZABO-SCANDIC HandelsgmbH

Quellenstraße 110, A-1100 Wien

T. +43(0)1 489 3961-0

F. +43(0)1 489 3961-7

mail@szabo-scandic.com

www.szabo-scandic.com

[linkedin.com/company/szaboscandic](https://www.linkedin.com/company/szaboscandic) 

SREBP1 + SREBP2 antibody

Cat. No. GTX03277

Host	Rabbit
Clonality	Polyclonal
Isotype	IgG
Application	WB, IHC-P
Reactivity	Human, Mouse, Rat, Bovine

Package
100 µl

APPLICATION

Application Note

*Optimal dilutions/concentrations should be determined by the researcher.

Suggested dilution	Recommended dilution
WB	Assay dependent
IHC-P	Assay dependent

Not tested in other applications.

PROPERTIES

Form	Liquid
Buffer	1% BSA, 50% Glycerol
Preservative	0.09% Sodium azide
Storage	Store as concentrated solution. Centrifuge briefly prior to opening vial. For short-term storage (1-2 weeks), store at 4°C. For long-term storage, aliquot and store at -20°C or below. Avoid multiple freeze-thaw cycles.
Concentration	1 mg/ml (Please refer to the vial label for the specific concentration.)
Immunogen	KLH conjugated synthetic peptide derived from human SREBP-1 (301-450).
Purification	Protein A purified
Conjugation	Unconjugated

Note

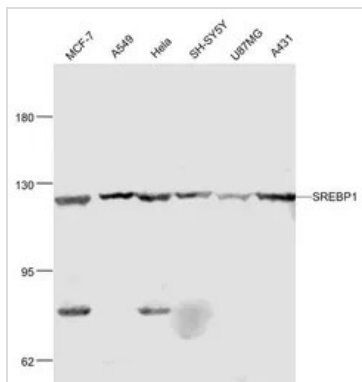
For laboratory research use only. Not for any clinical, therapeutic, or diagnostic use in humans or animals. Not for animal or human consumption.

Purchasers shall not, and agree not to enable third parties to, analyze, copy, reverse engineer or otherwise attempt to determine the structure or sequence of the product.



For full product information, images and publications, please visit our [website](#).

DATA IMAGES

**GTX03277 WB Image**

WB analysis of various sample lysates using GTX03277 SREBP1 + SREBP2 antibody.

Lane 1 : MCF-7 cell lysates

Lane 2 : A549 cell lysates

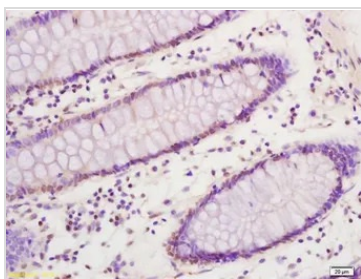
Lane 3 : HeLa cell lysates

Lane 4 : SH-SY5Y cell lysates

Lane 5 : U-87MG cell lysates

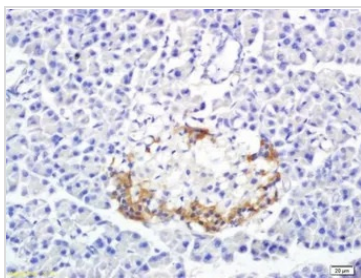
Lane 6 : A431 cell lysates

Dilution : 1:1000

**GTX03277 IHC-P Image**

IHC-P analysis of human colon carcinoma tissue using GTX03277 SREBP1 + SREBP2 antibody.

Dilution : 1:200

**GTX03277 IHC-P Image**

IHC-P analysis of rat pancreas tissue using GTX03277 SREBP1 + SREBP2 antibody.

**GTX03277 IHC-P Image**

IHC-P analysis of mouse liver tissue using GTX03277 SREBP1 + SREBP2 antibody.

Antigen retrieval : Boiling in sodium citrate buffer (pH6.0) for 15min

Dilution : 1:200



For full product information, images and publications, please visit our [website](#).