



SZABO SCANDIC

Part of Europa Biosite

Produktinformation



Forschungsprodukte & Biochemikalien



Zellkultur & Verbrauchsmaterial



Diagnostik & molekulare Diagnostik



Laborgeräte & Service

Weitere Information auf den folgenden Seiten!
See the following pages for more information!



Lieferung & Zahlungsart

siehe unsere [Liefer- und Versandbedingungen](#)

Zuschläge

- Mindermengenzuschlag
- Trockeneiszuschlag
- Gefahrgutzuschlag
- Expressversand

SZABO-SCANDIC HandelsgmbH

Quellenstraße 110, A-1100 Wien

T. +43(0)1 489 3961-0

F. +43(0)1 489 3961-7

mail@szabo-scandic.com

www.szabo-scandic.com

[linkedin.com/company/szaboscandic](https://www.linkedin.com/company/szaboscandic) 

Caspase 3 (cleaved Asp175) antibody

Cat. No. GTX03281

| | |
|--------------------|-------------------|
| Host | Rabbit |
| Clonality | Polyclonal |
| Isotype | IgG |
| Application | WB, ICC/IF, IHC-P |
| Reactivity | Human, Mouse |

Reference (1)
 Package
 100 µl

APPLICATION

Application Note

*Optimal dilutions/concentrations should be determined by the researcher.

| Suggested dilution | Recommended dilution |
|--------------------|----------------------|
| WB | 1:500-1:2000 |
| ICC/IF | 1:100-1:500 |
| IHC-P | 1:50-1:200 |

Not tested in other applications.

PROPERTIES

| | |
|----------------------|--|
| Form | Liquid |
| Buffer | PBS pH7.4, 150mM NaCl, 50% Glycerol |
| Preservative | 0.02% Sodium azide |
| Storage | Store as concentrated solution. Centrifuge briefly prior to opening vial. For short-term storage (1-2 weeks), store at 4°C. For long-term storage, aliquot and store at -20°C or below. Avoid multiple freeze-thaw cycles. |
| Concentration | 1 mg/ml (Please refer to the vial label for the specific concentration.) |
| Immunogen | A synthesized peptide derived from Human CASP3 (Accession P42574), corresponding to amino acid residues C163-M182. |
| Purification | Purified by antigen-affinity chromatography From serum |
| Conjugation | Unconjugated |

Note

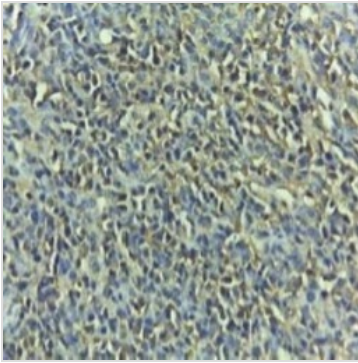
For laboratory research use only. Not for any clinical, therapeutic, or diagnostic use in humans or animals. Not for animal or human consumption.

Purchasers shall not, and agree not to enable third parties to, analyze, copy, reverse engineer or otherwise attempt to determine the structure or sequence of the product.



For full product information, images and publications, please visit our [website](#).

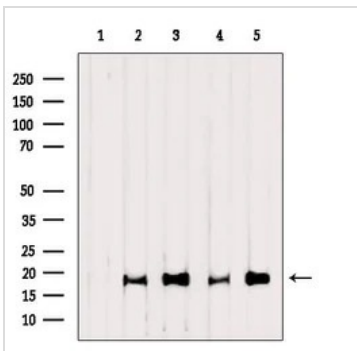
DATA IMAGES

**GTX03281 IHC-P Image**

IHC-P analysis of human ehrlich carcinoma tissue using GTX03281 Caspase 3 (cleaved Asp175) antibody.

Antigen retrieval : Heat mediated antigen retrieval step in citrate buffer was performed.

Dilution : 1:100

**GTX03281 WB Image**

WB analysis of various sample lysates using GTX03281 Caspase 3 (cleaved Asp175) antibody.

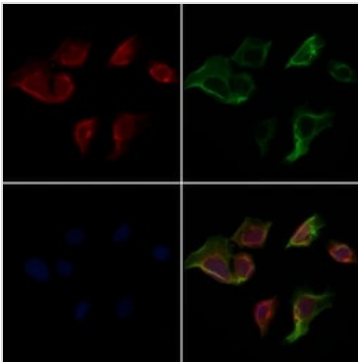
Lane 1 : HeLa treated with blocking peptide

Lane 2 : HeLa (etoposide treated, 25 μ M 5h)

Lane 3 : MCF7 (etoposide treated, 25 μ M 5h)

Lane 4 : Mouse heart tissue lysate

Lane 5 : Mouse spleen tissue lysate

**GTX03281 ICC/IF Image**

ICC/IF analysis of PFA-fixed HeLa cells using GTX03281 Caspase 3 (cleaved Asp175) antibody.

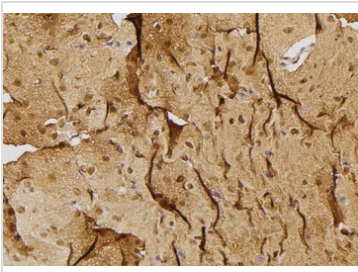
Red : Primary antibody

Green : beta tubulin

Blue : DAPI

Permeabilization : 0.1% Triton X-100

Dilution : 1:200

**GTX03281 IHC-P Image**

IHC-P analysis of mouse brain tissue using GTX03281 Caspase 3 (cleaved Asp175) antibody.

Antigen retrieval : Heat mediated antigen retrieval step in citrate buffer was performed.

Dilution : 1:100



For full product information, images and publications, please visit our [website](#).