



SZABO SCANDIC

Part of Europa Biosite

Produktinformation



Forschungsprodukte & Biochemikalien



Zellkultur & Verbrauchsmaterial



Diagnostik & molekulare Diagnostik



Laborgeräte & Service

Weitere Information auf den folgenden Seiten!
See the following pages for more information!



Lieferung & Zahlungsart

siehe unsere [Liefer- und Versandbedingungen](#)

Zuschläge

- Mindermengenzuschlag
- Trockeneiszuschlag
- Gefahrgutzuschlag
- Expressversand

SZABO-SCANDIC HandelsgmbH

Quellenstraße 110, A-1100 Wien

T. +43(0)1 489 3961-0

F. +43(0)1 489 3961-7

mail@szabo-scandic.com

www.szabo-scandic.com

[linkedin.com/company/szaboscandic](https://www.linkedin.com/company/szaboscandic) 

IGF1 antibody

Cat. No. GTX03348

Host	Goat
Clonality	Polyclonal
Isotype	IgG
Application	WB, ICC/IF, IHC-P, FACS
Reactivity	Human

Package
100 µg

APPLICATION

Application Note

*Optimal dilutions/concentrations should be determined by the researcher.

Suggested dilution	Recommended dilution
WB	0.5-2µg/ml
ICC/IF	10µg/ml
IHC-P	3.75µg/ml
FACS	10µg/ml

Not tested in other applications.

Calculated MW 22 kDa. ([Note](#))

PROPERTIES

Form	Liquid
Buffer	Tris pH7.3, 0.5% BSA
Preservative	0.02% Sodium azide
Storage	Store as concentrated solution. Centrifuge briefly prior to opening vial. For short-term storage (1-2 weeks), store at 4°C. For long-term storage, aliquot and store at -20°C or below. Avoid multiple freeze-thaw cycles.
Concentration	0.5 mg/ml (Please refer to the vial label for the specific concentration.)
Immunogen	Peptide with sequence C-RSVRAQRHTD, from the internal region of the protein sequence according to NP_001104753.1; NP_001104754.1; NP_001104755.1; NP_000609.1.
Purification	Purified by ammonium sulphate precipitation followed by antigen-affinity chromatography From serum
Conjugation	Unconjugated



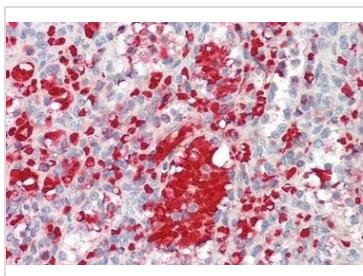
For full product information, images and publications, please visit our [website](#).

For laboratory research use only. Not for any clinical, therapeutic, or diagnostic use in humans or animals. Not for animal or human consumption.

Note

Purchasers shall not, and agree not to enable third parties to, analyze, copy, reverse engineer or otherwise attempt to determine the structure or sequence of the product.

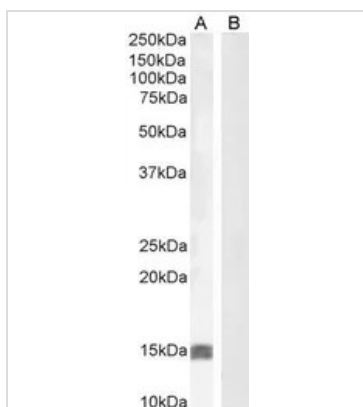
DATA IMAGES

**GTX03348 IHC-P Image**

IHC-P analysis of human spleen tissue using GTX03348 IGF1 antibody.

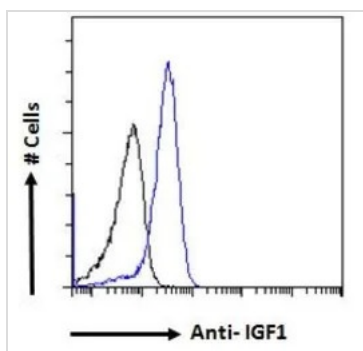
Dilution : 3.75µg/ml

Antigen retrieval : Steamed antigen retrieval with citrate buffer pH 6.

**GTX03348 WB Image**

WB analysis of human uterus (Lane A) and negative control HepG2 (Lane B) lysate (35µg protein in RIPA buffer) using GTX03348 IGF1 antibody.

Dilution : 0.5µg/ml

**GTX03348 FACS Image**

FACS analysis of PFA-fixed A549 cells using GTX03348 IGF1 antibody.

Blue : Primary antibody

Black : Isotype control

Permeabilization : 0.5% Triton

Dilution : 10µg/ml



For full product information, images and publications, please visit our [website](#).