



SZABO SCANDIC

Part of Europa Biosite

Produktinformation



Forschungsprodukte & Biochemikalien



Zellkultur & Verbrauchsmaterial



Diagnostik & molekulare Diagnostik



Laborgeräte & Service

Weitere Information auf den folgenden Seiten!
See the following pages for more information!



Lieferung & Zahlungsart

siehe unsere [Liefer- und Versandbedingungen](#)

Zuschläge

- Mindermengenzuschlag
- Trockeneiszuschlag
- Gefahrgutzuschlag
- Expressversand

SZABO-SCANDIC HandelsgmbH

Quellenstraße 110, A-1100 Wien

T. +43(0)1 489 3961-0

F. +43(0)1 489 3961-7

mail@szabo-scandic.com

www.szabo-scandic.com

[linkedin.com/company/szaboscandic](https://www.linkedin.com/company/szaboscandic) 

Chk2 (phospho Thr68) antibody

Cat. No. GTX03351

Host	Rabbit
Clonality	Polyclonal
Isotype	IgG
Application	WB, ICC/IF, IHC-P, ELISA
Reactivity	Human, Mouse, Rat

Package
100 µl

APPLICATION

Application Note

*Optimal dilutions/concentrations should be determined by the researcher.

Suggested dilution	Recommended dilution
WB	1:500-1:2000
ICC/IF	1:100-1:500
IHC-P	1:50-1:200
ELISA	Assay dependent

Not tested in other applications.

Calculated MW 61 kDa. ([Note](#))

PROPERTIES

Form	Liquid
Buffer	PBS pH7.4, 150mM NaCl, 50% Glycerol
Preservative	0.02% Sodium azide
Storage	Store as concentrated solution. Centrifuge briefly prior to opening vial. For short-term storage (1-2 weeks), store at 4°C. For long-term storage, aliquot and store at -20°C or below. Avoid multiple freeze-thaw cycles.
Concentration	1 mg/ml (Please refer to the vial label for the specific concentration.)
Immunogen	A synthesized peptide derived from Human CHEK2(Accession O96017), corresponding to amino acid residues S56-P75.
Purification	Purified by affinity purification via sequential chromatography on phospho-peptide and non-phospho-peptide affinity columns. From serum
Conjugation	Unconjugated



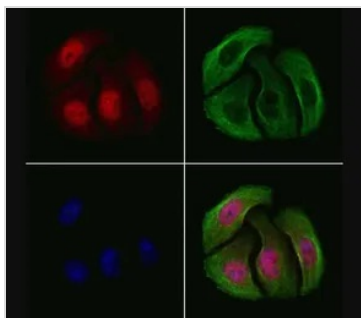
For full product information, images and publications, please visit our [website](#).

For laboratory research use only. Not for any clinical, therapeutic, or diagnostic use in humans or animals. Not for animal or human consumption.

Note

Purchasers shall not, and agree not to enable third parties to, analyze, copy, reverse engineer or otherwise attempt to determine the structure or sequence of the product.

DATA IMAGES



GTX03351 ICC/IF Image

ICC/IF analysis of PFA-fixed HeLa cells (4h of LPS treatment) using GTX03351 Chk2 (phospho Thr68) antibody.

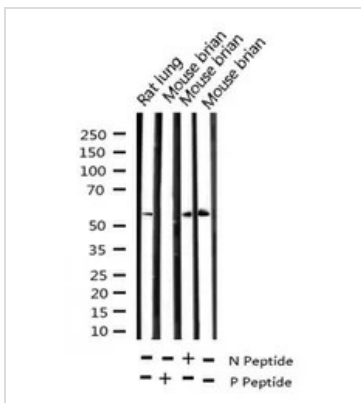
Red : Primary antibody

Green : Beta tubulin

Blue : DAPI

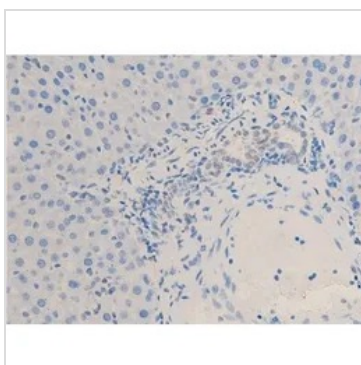
Permeabilization : 0.1% Triton X-100

Dilution : 1:200



GTX03351 WB Image

WB analysis of rat lung and mouse brain tissue lysate using GTX03351 Chk2 (phospho Thr68) antibody. -/+ means absence or presence of N peptide(non-phospho peptide) and P peptide(phospho peptide).



GTX03351 IHC-P Image

IHC-P analysis of rat liver tissue using GTX03351 Chk2 (phospho Thr68) antibody.

Antigen retrieval : heat mediated antigen retrieval step in citrate buffer was performed.

Dilution : 1:100



For full product information, images and publications, please visit our [website](#).