



SZABO SCANDIC

Part of Europa Biosite

Produktinformation



Forschungsprodukte & Biochemikalien



Zellkultur & Verbrauchsmaterial



Diagnostik & molekulare Diagnostik



Laborgeräte & Service

Weitere Information auf den folgenden Seiten!
See the following pages for more information!



Lieferung & Zahlungsart

siehe unsere [Liefer- und Versandbedingungen](#)

Zuschläge

- Mindermengenzuschlag
- Trockeneiszuschlag
- Gefahrgutzuschlag
- Expressversand

SZABO-SCANDIC HandelsgmbH

Quellenstraße 110, A-1100 Wien

T. +43(0)1 489 3961-0

F. +43(0)1 489 3961-7

mail@szabo-scandic.com

www.szabo-scandic.com

[linkedin.com/company/szaboscandic](https://www.linkedin.com/company/szaboscandic) 

TJP2 antibody

Cat. No. GTX03355

Host	Rabbit
Clonality	Polyclonal
Isotype	IgG
Application	WB, ICC/IF, IHC-P, FACS
Reactivity	Human, Mouse, Rat, Monkey

Package
100 µg

APPLICATION

Application Note

*Optimal dilutions/concentrations should be determined by the researcher.

Suggested dilution	Recommended dilution
WB	0.25-0.5µg/ml
ICC/IF	5µg/ml
IHC-P	2-5µg/ml
FACS	1-3µg/1x10 ⁶ cells

Not tested in other applications.

Calculated MW 134 kDa. ([Note](#))

PROPERTIES

Form	Liquid
Buffer	4mg Trehalose, 0.9mg NaCl, 0.2mg Na ₂ HPO ₄
Preservative	No preservative
Storage	Store as concentrated solution. Centrifuge briefly prior to opening vial. For short-term storage (1-2 weeks), store at 4°C. For long-term storage, aliquot and store at -20°C or below. Avoid multiple freeze-thaw cycles.
Concentration	0.5 mg/ml (Please refer to the vial label for the specific concentration.)
Immunogen	A synthetic peptide corresponding to a sequence of human TJP2/ZO2 (QEAQNARIEIAQKHPDIYAVPIK).
Purification	Purified by antigen-affinity chromatography
Conjugation	Unconjugated

Note

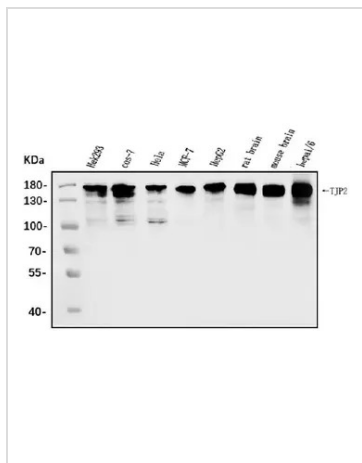
For laboratory research use only. Not for any clinical, therapeutic, or diagnostic use in humans or animals. Not for animal or human consumption.

Purchasers shall not, and agree not to enable third parties to, analyze, copy, reverse engineer or otherwise attempt to determine the structure or sequence of the product.



For full product information, images and publications, please visit our [website](#).

DATA IMAGES



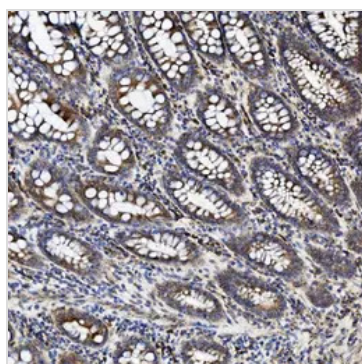
GTX03355 WB Image

WB analysis of various sample lysates using GTX03355 TJP2 antibody.

- Lane 1 : HEK293 whole cell lysates
- Lane 2 : COS-7 whole cell lysates
- Lane 3 : HeLa whole cell lysates
- Lane 4 : MCF-7 whole cell lysates
- Lane 5 : HepG2 whole cell lysates
- Lane 6 : rat brain tissue lysates
- Lane 7 : mouse brain tissue lysates
- Lane 8 : HEPA1-6 whole cell lysates

Dilution : 0.5 µg/mL

Loading : 30µg per lane

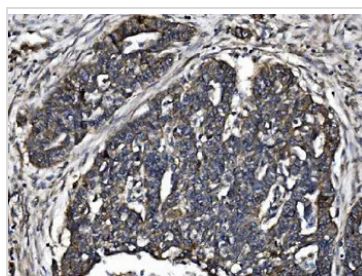


GTX03355 IHC-P Image

IHC-P analysis of human rectal cancer tissue using GTX03355 TJP2 antibody.

Antigen retrieval : Heat mediated antigen retrieval was performed in EDTA buffer (pH8.0, epitope retrieval solution)

Dilution : 2µg/ml

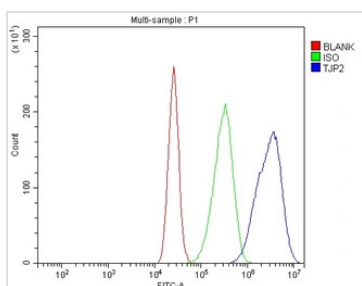


GTX03355 IHC-P Image

IHC-P analysis of human ovarian serous adenocarcinoma tissue using GTX03355 TJP2 antibody.

Antigen retrieval : Heat mediated antigen retrieval was performed in EDTA buffer (pH8.0, epitope retrieval solution)

Dilution : 2µg/ml



GTX03355 FACS Image

FACS analysis of CACO-2 cells using GTX03355 TJP2 antibody.

- Blue : Primary antibody
- Green : Isotype control
- Red : Unlabelled sample

Antibody amount : 1µg/1x10⁶ cells for 30 min at 20°C



For full product information, images and publications, please visit our [website](#).