



SZABO SCANDIC

Part of Europa Biosite

Produktinformation



Forschungsprodukte & Biochemikalien



Zellkultur & Verbrauchsmaterial



Diagnostik & molekulare Diagnostik



Laborgeräte & Service

Weitere Information auf den folgenden Seiten!
See the following pages for more information!



Lieferung & Zahlungsart

siehe unsere [Liefer- und Versandbedingungen](#)

Zuschläge

- Mindermengenzuschlag
- Trockeneiszuschlag
- Gefahrgutzuschlag
- Expressversand

SZABO-SCANDIC HandelsgmbH

Quellenstraße 110, A-1100 Wien

T. +43(0)1 489 3961-0

F. +43(0)1 489 3961-7

mail@szabo-scandic.com

www.szabo-scandic.com

[linkedin.com/company/szaboscandic](https://www.linkedin.com/company/szaboscandic) 

MUTYH antibody

Cat. No. GTX03360

Host	Rabbit
Clonality	Polyclonal
Isotype	IgG
Application	WB, ICC/IF, FACS
Reactivity	Human, Mouse

Package
400 µl

APPLICATION

Application Note

*Optimal dilutions/concentrations should be determined by the researcher.

Suggested dilution	Recommended dilution
WB	1:1000
ICC/IF	1:10-1:50
FACS	1:10-1:50

Not tested in other applications.

Calculated MW 60 kDa. ([Note](#))

PROPERTIES

Form	Liquid
Buffer	PBS
Preservative	0.09% Sodium azide
Storage	Store as concentrated solution. Centrifuge briefly prior to opening vial. For short-term storage (1-2 weeks), store at 4°C. For long-term storage, aliquot and store at -20°C or below. Avoid multiple freeze-thaw cycles.
Concentration	Batch dependent (Please refer to the vial label for the specific concentration.)
Immunogen	KLH conjugated synthetic peptide between 341-367 amino acids from the Central region of human MUTYH.
Purification	Purified by Saturated Ammonium Sulfate (SAS) precipitation followed by dialysis against PBS
Conjugation	Unconjugated

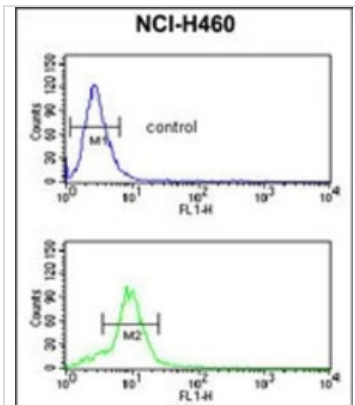
Note

For laboratory research use only. Not for any clinical, therapeutic, or diagnostic use in humans or animals. Not for animal or human consumption.

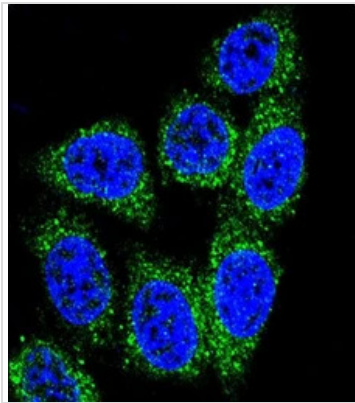
Purchasers shall not, and agree not to enable third parties to, analyze, copy, reverse engineer or otherwise attempt to determine the structure or sequence of the product.



For full product information, images and publications, please visit our [website](#).

DATA IMAGES

GTX03360 FACS Image

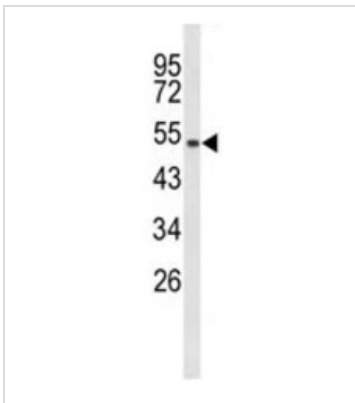
FACS analysis of NCI-H460 cells (bottom histogram) compared to a negative control cell (top histogram) using GTX03360 MUTYH antibody.


GTX03360 ICC/IF Image

ICC/IF analysis of HeLa cells using GTX03360 MUTYH antibody.

Green : Primary antibody

Blue : DAPI


GTX03360 WB Image

WB analysis of mouse lung tissue lysate (35µg/lane) using GTX03360 MUTYH antibody.



For full product information, images and publications, please visit our [website](#).