



SZABO SCANDIC

Part of Europa Biosite

Produktinformation



Forschungsprodukte & Biochemikalien



Zellkultur & Verbrauchsmaterial



Diagnostik & molekulare Diagnostik



Laborgeräte & Service

Weitere Information auf den folgenden Seiten!
See the following pages for more information!



Lieferung & Zahlungsart

siehe unsere [Liefer- und Versandbedingungen](#)

Zuschläge

- Mindermengenzuschlag
- Trockeneiszuschlag
- Gefahrgutzuschlag
- Expressversand

SZABO-SCANDIC HandelsgmbH

Quellenstraße 110, A-1100 Wien

T. +43(0)1 489 3961-0

F. +43(0)1 489 3961-7

mail@szabo-scandic.com

www.szabo-scandic.com

[linkedin.com/company/szaboscandic](https://www.linkedin.com/company/szaboscandic) 

PPAR gamma antibody

Cat. No. GTX03364

Host	Rabbit
Clonality	Polyclonal
Isotype	IgG
Application	WB, ICC/IF, IHC-P, FACS
Reactivity	Human, Mouse, Rat, Sheep, Bovine

Package
100 µl

APPLICATION

Application Note

*Optimal dilutions/concentrations should be determined by the researcher.

Suggested dilution	Recommended dilution
WB	1:300-1:1000
ICC/IF	1:50-1:200
IHC-P	1:200-1:400
FACS	1:20-1:100

Not tested in other applications.

Calculated MW 58 kDa. ([Note](#))

PROPERTIES

Form	Liquid
Buffer	1% BSA, 50% Glycerol
Preservative	0.09% Sodium azide
Storage	Store as concentrated solution. Centrifuge briefly prior to opening vial. For short-term storage (1-2 weeks), store at 4°C. For long-term storage, aliquot and store at -20°C or below. Avoid multiple freeze-thaw cycles.
Concentration	1 mg/ml (Please refer to the vial label for the specific concentration.)
Immunogen	KLH conjugated synthetic peptide derived from human PPAR Gamma (101-200).
Purification	Protein A purified
Conjugation	Unconjugated

Note

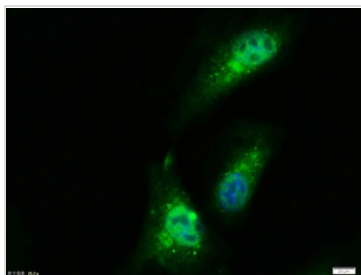
For laboratory research use only. Not for any clinical, therapeutic, or diagnostic use in humans or animals. Not for animal or human consumption.

Purchasers shall not, and agree not to enable third parties to, analyze, copy, reverse engineer or otherwise attempt to determine the structure or sequence of the product.



For full product information, images and publications, please visit our [website](#).

DATA IMAGES



GTX03364 ICC/IF Image

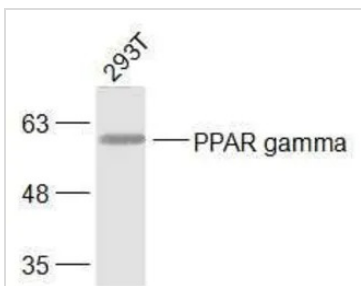
ICC/IF analysis of 4%PFA-fixed A549 cells using GTX03364 PPAR gamma antibody.

Green : Primary antibody

Blue : DAPI

Permeabilization : Triton X-100 at room temperature for 20 min

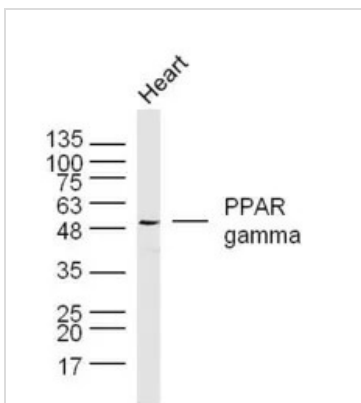
Dilution : 1:100



GTX03364 WB Image

WB analysis of 293T whole cell lysate using GTX03364 PPAR gamma antibody.

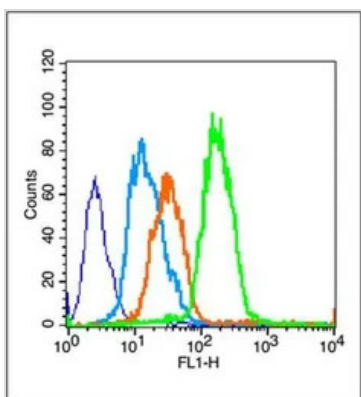
Dilution : 1:1000



GTX03364 WB Image

WB analysis of sheep heart tissue lysate using GTX03364 PPAR gamma antibody.

Dilution : 1:300



GTX03364 FACS Image

FACS analysis of U251 cells using GTX03364 PPAR gamma antibody.

Green : Primary antibody

Blue : Unstained cell

Light blue : Secondary antibody only

Orange : Isotype control

Fixation : 70% ethanol (Overnight at 4°C)

Permeabilization : 90% ice-cold methanol for 30 min on ice

Dilution : 1:100



For full product information, images and publications, please visit our [website](#).