



SZABO SCANDIC

Part of Europa Biosite

Produktinformation



Forschungsprodukte & Biochemikalien



Zellkultur & Verbrauchsmaterial



Diagnostik & molekulare Diagnostik



Laborgeräte & Service

Weitere Information auf den folgenden Seiten!
See the following pages for more information!



Lieferung & Zahlungsart

siehe unsere [Liefer- und Versandbedingungen](#)

Zuschläge

- Mindermengenzuschlag
- Trockeneiszuschlag
- Gefahrgutzuschlag
- Expressversand

SZABO-SCANDIC HandelsgmbH

Quellenstraße 110, A-1100 Wien

T. +43(0)1 489 3961-0

F. +43(0)1 489 3961-7

mail@szabo-scandic.com

www.szabo-scandic.com

[linkedin.com/company/szaboscandic](https://www.linkedin.com/company/szaboscandic) 

FOXO1 (Acetyl Lys294) antibody

Cat. No. GTX03372

Host	Rabbit
Clonality	Polyclonal
Isotype	IgG
Application	WB, IHC-P
Reactivity	Human, Monkey

Package
100 µl

APPLICATION

Application Note

*Optimal dilutions/concentrations should be determined by the researcher.

Suggested dilution	Recommended dilution
WB	1:500-1:2000
IHC-P	1:50-1:200

Not tested in other applications.

Calculated MW 70 kDa. ([Note](#))

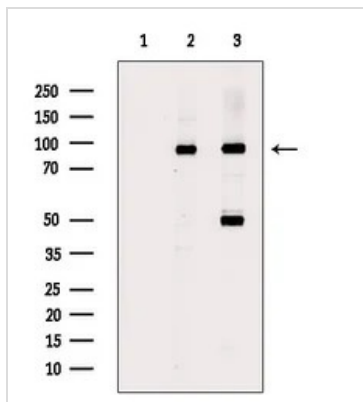
PROPERTIES

Form	Liquid
Buffer	PBS pH7.4, 150mM NaCl, 50% Glycerol
Preservative	0.02% Sodium azide
Storage	Store as concentrated solution. Centrifuge briefly prior to opening vial. For short-term storage (1-2 weeks), store at 4°C. For long-term storage, aliquot and store at -20°C or below. Avoid multiple freeze-thaw cycles.
Concentration	1 mg/ml (Please refer to the vial label for the specific concentration.)
Immunogen	A synthesized peptide derived from Human FOXO1 (Accession Q12778), corresponding to amino acid residues E282-H302.
Purification	Purified by antigen-affinity chromatography From serum
Conjugation	Unconjugated
Note	For laboratory research use only. Not for any clinical, therapeutic, or diagnostic use in humans or animals. Not for animal or human consumption. Purchasers shall not, and agree not to enable third parties to, analyze, copy, reverse engineer or otherwise attempt to determine the structure or sequence of the product.



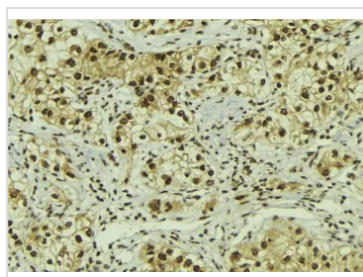
For full product information, images and publications, please visit our [website](#).

DATA IMAGES



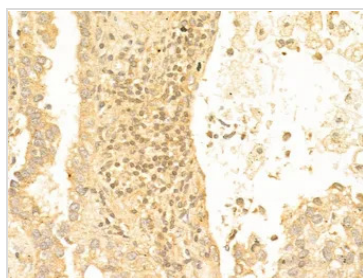
GTX03372 WB Image

WB analysis of various samples using GTX03372 FOXO1 (Acetyl Lys294) antibody.
 Lane 1 : Heat-shock treated COS-7 cell lysate blocked with antigen-specific peptides
 Lane 2 : Heat-shock treated COS-7 cell lysate
 Lane 3 : LPS treated A2780 cell lysate



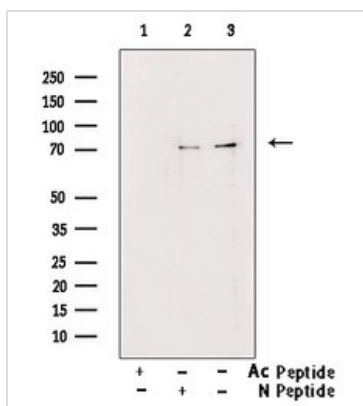
GTX03372 IHC-P Image

IHC-P analysis of human breast cancer tissue section using GTX03372 FOXO1 (Acetyl Lys294) antibody.
 Antigen retrieval : Heat mediated antigen retrieval step in citrate buffer was performed.
 Dilution : 1:100



GTX03372 IHC-P Image

IHC-P analysis of human lung cancer tissue section using GTX03372 FOXO1 (Acetyl Lys294) antibody.
 Antigen retrieval : Heat mediated antigen retrieval step in citrate buffer was performed.
 Dilution : 1:100



GTX03372 WB Image

WB analysis of TSA treated HeLa cell lysate using GTX03372 FOXO1 (Acetyl Lys294) antibody.
 Lane1 : Primary antibody pre-treated with Ac-blocking peptide
 Lane2 : Primary antibody pre-treated with Non-Ac-blocking peptide



For full product information, images and publications, please visit our [website](http://www.genetex.com).