



SZABO SCANDIC

Part of Europa Biosite

Produktinformation



Forschungsprodukte & Biochemikalien



Zellkultur & Verbrauchsmaterial



Diagnostik & molekulare Diagnostik



Laborgeräte & Service

Weitere Information auf den folgenden Seiten!
See the following pages for more information!



Lieferung & Zahlungsart

siehe unsere [Liefer- und Versandbedingungen](#)

Zuschläge

- Mindermengenzuschlag
- Trockeneiszuschlag
- Gefahrgutzuschlag
- Expressversand

SZABO-SCANDIC HandelsgmbH

Quellenstraße 110, A-1100 Wien

T. +43(0)1 489 3961-0

F. +43(0)1 489 3961-7

mail@szabo-scandic.com

www.szabo-scandic.com

[linkedin.com/company/szaboscandic](https://www.linkedin.com/company/szaboscandic) 

Human CD28 (ECD) protein, human IgG Fc tag and His tag

Cat. No. GTX03373-pro**Application** Functional Assay**Species** Human**Package**

100 µg

APPLICATION

Application Note

Functional assay: Measured by its binding ability in a functional ELISA with Human CD80 protein. The ED₅₀ range ≤ 10µg/ml.

Observed MW 42 kDa.

PROPERTIES

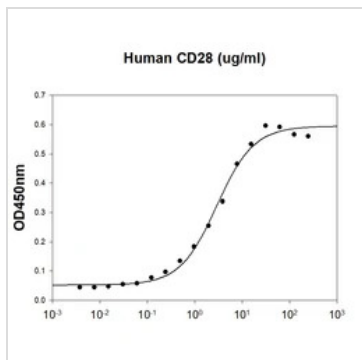
Form Liquid**Buffer** PBS pH7.4, 10% Glycerol**Preservative** No preservative**Storage** Store as concentrated solution. Centrifuge briefly prior to opening vial. For short-term storage (1-2 weeks), store at 4°C. For long-term storage, aliquot and store at -20°C or below. Avoid multiple freeze-thaw cycles.**Concentration** 1 mg/ml (Please refer to the vial label for the specific concentration.)**Region/Sequence** 19-152aa (NP_006130)**Expression System** Baculovirus**Purity** > 90% by SDS-PAGE**Conjugation** Unconjugated**Note**

For laboratory research use only. Not for any clinical, therapeutic, or diagnostic use in humans or animals. Not for animal or human consumption.

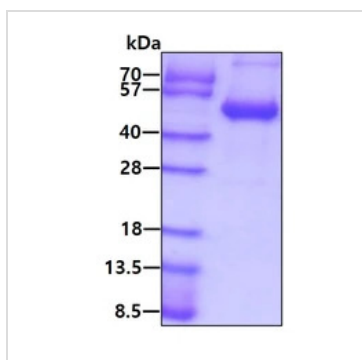
Purchasers shall not, and agree not to enable third parties to, analyze, copy, reverse engineer or otherwise attempt to determine the structure or sequence of the product.



For full product information, images and publications, please visit our [website](#).

DATA IMAGES

GTX03373-pro Functional Assay Image

Functional ELISA analysis of immobilized human CD80 protein at 1 µg/ml (100 µl/well) can bind GTX03373-pro Human CD28 (ECD) protein, human IgG Fc tag and His tag. The ED₅₀ range ≤ 10µg/ml.


GTX03373-pro Image

SDS-PAGE of 3µg GTX03373-pro Human CD28 (ECD) protein, human IgG Fc tag and His tag.



For full product information, images and publications, please visit our [website](#).