



SZABO SCANDIC

Part of Europa Biosite

Produktinformation



Forschungsprodukte & Biochemikalien



Zellkultur & Verbrauchsmaterial



Diagnostik & molekulare Diagnostik



Laborgeräte & Service

Weitere Information auf den folgenden Seiten!
See the following pages for more information!



Lieferung & Zahlungsart

siehe unsere [Liefer- und Versandbedingungen](#)

Zuschläge

- Mindermengenzuschlag
- Trockeneiszuschlag
- Gefahrgutzuschlag
- Expressversand

SZABO-SCANDIC HandelsgmbH

Quellenstraße 110, A-1100 Wien

T. +43(0)1 489 3961-0

F. +43(0)1 489 3961-7

mail@szabo-scandic.com

www.szabo-scandic.com

[linkedin.com/company/szaboscandic](https://www.linkedin.com/company/szaboscandic) 

c-Fos antibody

Cat. No. GTX03375

Host	Rabbit
Clonality	Polyclonal
Isotype	IgG
Application	WB, ICC/IF, IHC (Free Floating)
Reactivity	Human, Mouse, Rat

Package
100 µl

APPLICATION

Application Note

*Optimal dilutions/concentrations should be determined by the researcher.

Suggested dilution	Recommended dilution
WB	Assay dependent
ICC/IF	Assay dependent
IHC (Free Floating)	Assay dependent

Not tested in other applications.

Calculated MW 41 kDa. ([Note](#))

PROPERTIES

Form	Liquid
Buffer	50% PBS, 50% glycerol
Preservative	5mM Sodium azide
Storage	Store as concentrated solution. Centrifuge briefly prior to opening vial. For short-term storage (1-2 weeks), store at 4°C. For long-term storage, aliquot and store at -20°C or below. Avoid multiple freeze-thaw cycles.
Concentration	1 mg/ml (Please refer to the vial label for the specific concentration.)
Immunogen	Full length recombinant human protein expressed in and purified from E. coli.
Purification	Purified by affinity chromatography
Conjugation	Unconjugated

Note

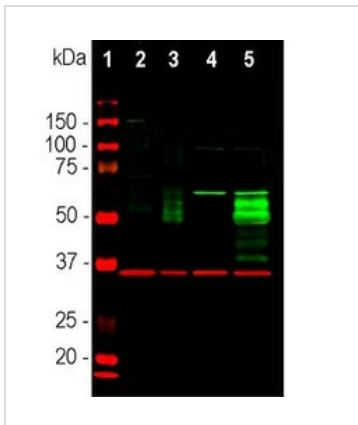
For laboratory research use only. Not for any clinical, therapeutic, or diagnostic use in humans or animals. Not for animal or human consumption.

Purchasers shall not, and agree not to enable third parties to, analyze, copy, reverse engineer or otherwise attempt to determine the structure or sequence of the product.



For full product information, images and publications, please visit our [website](#).

DATA IMAGES

**GTX03375 WB Image**

WB analysis of various sample lysates using GTX03375 c-Fos antibody. Multiple bands at 50-65 kDa in stimulated or treated cell lysates, correspond to different isoforms of the c-FOS protein.

Red : Primary antibody

Green : GAPDH

Dilution : 1:2000

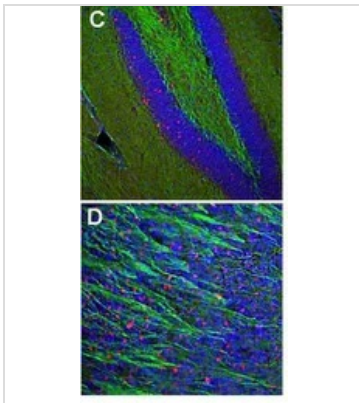
Lane 1 : protein marker

Lane 2 : HeLa cells grown in FBS free media

Lane 3 : HeLa cells stimulated with 20% FBS for 2 hours after being in FBS free media for 36 hours

Lane 4 : rat cortical neurons

Lane 5 : rat cortical neurons treated with membrane depolarization buffer for 5 hours

**GTX03375 IHC (Free Floating) Image**

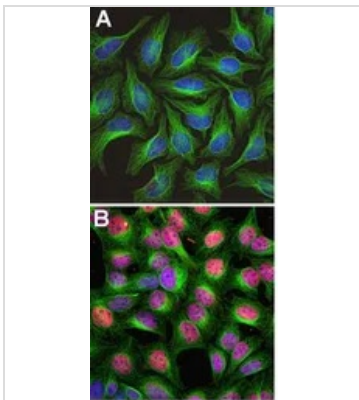
IHC (Free Floating) analysis of Mouse hippocampus (C) or olfactory bulb (D) tissue sections using GTX03375 c-Fos antibody. The c-FOS antibody stains only nuclei of spontaneously active neurons. NF-L is expressed in axons of neuronal cells.

Red : Primary antibody

Green : NF-L

Blue : Hoechst staining of nuclear DNA

Dilution : 1:10000

**GTX03375 ICC/IF Image**

ICC/IF analysis of HeLa cells were treated with PBS (A) or stimulated with 20% FBS (B) for 30 min after serum starvation for 36hr using GTX03375 c-Fos antibody. c-FOS antibody labels only the nuclei of stimulated cells.

Red : Primary antibody

Green : Tubulin

Blue : DAPI

Dilution : 1:2000



For full product information, images and publications, please visit our [website](#).