



SZABO SCANDIC

Part of Europa Biosite

Produktinformation



Forschungsprodukte & Biochemikalien



Zellkultur & Verbrauchsmaterial



Diagnostik & molekulare Diagnostik



Laborgeräte & Service

Weitere Information auf den folgenden Seiten!
See the following pages for more information!



Lieferung & Zahlungsart

siehe unsere [Liefer- und Versandbedingungen](#)

Zuschläge

- Mindermengenzuschlag
- Trockeneiszuschlag
- Gefahrgutzuschlag
- Expressversand

SZABO-SCANDIC HandelsgmbH

Quellenstraße 110, A-1100 Wien

T. +43(0)1 489 3961-0

F. +43(0)1 489 3961-7

mail@szabo-scandic.com

www.szabo-scandic.com

[linkedin.com/company/szaboscandic](https://www.linkedin.com/company/szaboscandic) 

CD16a antibody

Cat. No. GTX03379

Host	Rabbit
Clonality	Polyclonal
Isotype	IgG
Application	ICC/IF, IHC-P, FACS, ELISA
Reactivity	Human

Package
100 µg

APPLICATION

Application Note

*Optimal dilutions/concentrations should be determined by the researcher.

Suggested dilution	Recommended dilution
ICC/IF	Assay dependent
IHC-P	Assay dependent
FACS	Assay dependent
ELISA	Assay dependent

Not tested in other applications.

Calculated MW 29 kDa. ([Note](#))

PROPERTIES

Form	Liquid
Buffer	4mg Trehalose, 0.9mg NaCl, 0.2mg Na ₂ HPO ₄
Preservative	0.05mg Sodium azide
Storage	Store as concentrated solution. Centrifuge briefly prior to opening vial. For short-term storage (1-2 weeks), store at 4°C. For long-term storage, aliquot and store at -20°C or below. Avoid multiple freeze-thaw cycles.
Concentration	.5 mg/ml (Please refer to the vial label for the specific concentration.)
Immunogen	E. coli-derived human CD16 recombinant protein (Position: Q101-D166).
Purification	Purified IgG
Conjugation	Unconjugated

Note

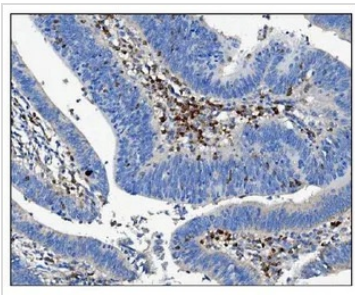
For laboratory research use only. Not for any clinical, therapeutic, or diagnostic use in humans or animals. Not for animal or human consumption.

Purchasers shall not, and agree not to enable third parties to, analyze, copy, reverse engineer or otherwise attempt to determine the structure or sequence of the product.



For full product information, images and publications, please visit our [website](#).

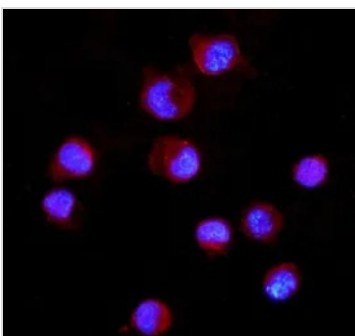
DATA IMAGES

**GTX03379 IHC-P Image**

IHC-P analysis of human rectal cancer tissue using GTX03379 CD16a antibody.

Antigen retrieval : Heat mediated antigen retrieval was performed in EDTA buffer (pH 8.0, epitope retrieval solution).

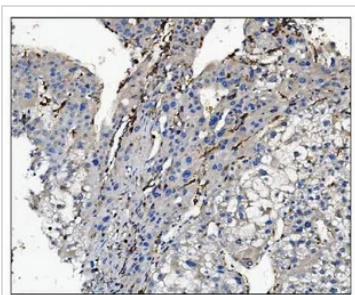
Dilution : 2 µg/ml

**GTX03379 ICC/IF Image**

ICC/IF analysis of K562 cells using GTX03379 CD16a antibody.

Antigen retrieval : IHC enzyme antigen retrieval reagent for 15min.

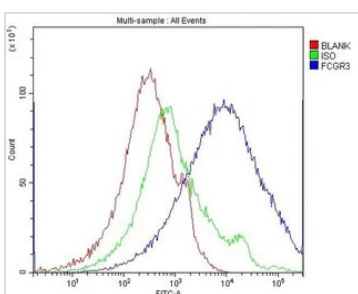
Dilution : 5 µg/mL

**GTX03379 IHC-P Image**

IHC-P analysis of human liver cancer tissue using GTX03379 CD16a antibody.

Antigen retrieval : Heat mediated antigen retrieval was performed in EDTA buffer (pH 8.0, epitope retrieval solution).

Dilution : 2 µg/ml

**GTX03379 FACS Image**

FACS analysis of human PBMC cells using GTX03379 CD16a antibody.

Blue : Primary antibody

Green : Isotype control >

Red : Unlabelled sample

Antibody amount : 1 µg/1x10⁶ cells



For full product information, images and publications, please visit our [website](#).