



SZABO SCANDIC

Part of Europa Biosite

Produktinformation



Forschungsprodukte & Biochemikalien



Zellkultur & Verbrauchsmaterial



Diagnostik & molekulare Diagnostik



Laborgeräte & Service

Weitere Information auf den folgenden Seiten!
See the following pages for more information!



Lieferung & Zahlungsart

siehe unsere [Liefer- und Versandbedingungen](#)

Zuschläge

- Mindermengenzuschlag
- Trockeneiszuschlag
- Gefahrgutzuschlag
- Expressversand

SZABO-SCANDIC HandelsgmbH

Quellenstraße 110, A-1100 Wien

T. +43(0)1 489 3961-0

F. +43(0)1 489 3961-7

mail@szabo-scandic.com

www.szabo-scandic.com

[linkedin.com/company/szaboscandic](https://www.linkedin.com/company/szaboscandic) 

CD16a antibody

Cat. No. GTX03380

Host	Rabbit
Clonality	Polyclonal
Isotype	IgG
Application	WB, IHC-P
Reactivity	Human, Mouse, Rat

Package
100 µl

APPLICATION
Application Note

*Optimal dilutions/concentrations should be determined by the researcher.

Suggested dilution	Recommended dilution
WB	Assay dependent
IHC-P	Assay dependent

Not tested in other applications.

Calculated MW 29 kDa. ([Note](#))

PROPERTIES

Form	Liquid
Buffer	1% BSA, 50% glycerol
Preservative	0.09% Sodium azide
Storage	Store as concentrated solution. Centrifuge briefly prior to opening vial. For short-term storage (1-2 weeks), store at 4°C. For long-term storage, aliquot and store at -20°C or below. Avoid multiple freeze-thaw cycles.
Concentration	1 mg/ml (Please refer to the vial label for the specific concentration.)
Immunogen	KLH conjugated synthetic peptide derived from human CD16a (131-230).
Purification	Protein A purified
Conjugation	Unconjugated

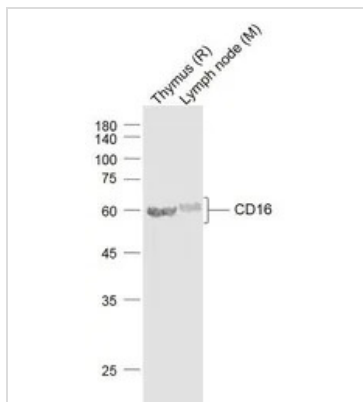
Note For laboratory research use only. Not for any clinical, therapeutic, or diagnostic use in humans or animals. Not for animal or human consumption.

Purchasers shall not, and agree not to enable third parties to, analyze, copy, reverse engineer or otherwise attempt to determine the structure or sequence of the product.



For full product information, images and publications, please visit our [website](#).

DATA IMAGES



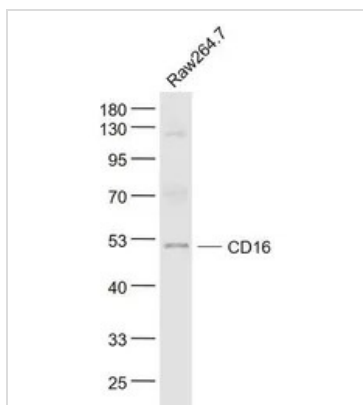
GTX03380 WB Image

WB analysis of various sample lysates using GTX03380 CD16a antibody.

Lane 1 : Rat Thymus tissue lysates

Lane 2 : Mouse Lymph node tissue lysates

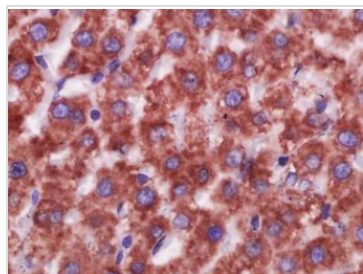
Dilution : 1:1000



GTX03380 WB Image

WB analysis of Raw264.7 whole cell lysate using GTX03380 CD16a antibody.

Dilution : 1:1000



GTX03380 IHC-P Image

IHC-P analysis of rat liver tissue using GTX03380 CD16a antibody.

Antigen retrieval : Boiling in sodium citrate buffer (pH6.0) for 15min.

Dilution : 1:400



For full product information, images and publications, please visit our [website](#).