



# SZABO SCANDIC

Part of Europa Biosite

## Produktinformation



Forschungsprodukte & Biochemikalien



Zellkultur & Verbrauchsmaterial



Diagnostik & molekulare Diagnostik



Laborgeräte & Service

Weitere Information auf den folgenden Seiten!  
See the following pages for more information!



### Lieferung & Zahlungsart

siehe unsere [Liefer- und Versandbedingungen](#)

### Zuschläge

- Mindermengenzuschlag
- Trockeneiszuschlag
- Gefahrgutzuschlag
- Expressversand

### SZABO-SCANDIC HandelsgmbH

Quellenstraße 110, A-1100 Wien

T. +43(0)1 489 3961-0

F. +43(0)1 489 3961-7

[mail@szabo-scandic.com](mailto:mail@szabo-scandic.com)

[www.szabo-scandic.com](http://www.szabo-scandic.com)

[linkedin.com/company/szaboscandic](https://www.linkedin.com/company/szaboscandic) 

# KLF2 antibody

**Cat. No. GTX03383**

<b>Host</b>	Rabbit
<b>Clonality</b>	Polyclonal
<b>Isotype</b>	IgG
<b>Application</b>	WB, ICC/IF, IHC-P, IHC-Fr, ChIP assay
<b>Reactivity</b>	Human, Mouse, Rat, Rabbit

**Package**  
 100 µl

## APPLICATION

### Application Note

\*Optimal dilutions/concentrations should be determined by the researcher.

Suggested dilution	Recommended dilution
--------------------	----------------------

WB	Assay dependent
----	-----------------

ICC/IF	Assay dependent
--------	-----------------

IHC-P	Assay dependent
-------	-----------------

IHC-Fr	Assay dependent
--------	-----------------

ChIP assay	Assay dependent
------------	-----------------

Not tested in other applications.

**Calculated MW** 37 kDa. ([Note](#))

## PROPERTIES

**Form** Liquid

**Buffer** 1% BSA, 50% glycerol

**Preservative** 0.09% Sodium azide

**Storage** Store as concentrated solution. Centrifuge briefly prior to opening vial. For short-term storage (1-2 weeks), store at 4°C. For long-term storage, aliquot and store at -20°C or below. Avoid multiple freeze-thaw cycles.

**Concentration** 1 mg/ml (Please refer to the vial label for the specific concentration.)

**Immunogen** KLH conjugated synthetic peptide derived from human KLF2 (251-355).

**Purification** Protein A purified

**Conjugation** Unconjugated



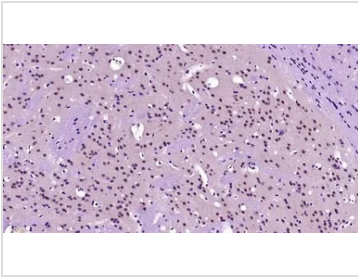
For full product information, images and publications, please visit our [website](#).

For laboratory research use only. Not for any clinical, therapeutic, or diagnostic use in humans or animals. Not for animal or human consumption.

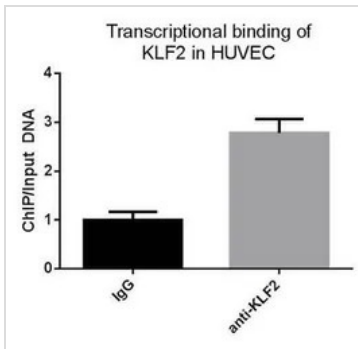
**Note**

Purchasers shall not, and agree not to enable third parties to, analyze, copy, reverse engineer or otherwise attempt to determine the structure or sequence of the product.

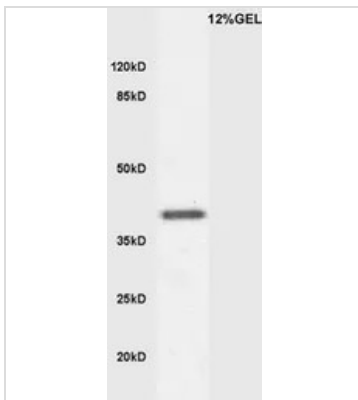
## DATA IMAGES

**GTX03383 IHC-P Image**

IHC-P analysis of mouse brain tissue lysate using GTX03383 KLF2 antibody.  
Antigen retrieval : Boiling in sodium citrate buffer (0.01M, pH6) for 15 minutes  
Dilution : 1:200

**GTX03383 ChIP assay Image**

ChIP analysis of HUVEC cells using GTX03383 KLF2 antibody.

**GTX03383 WB Image**

WB analysis of mouse embryo lysates using GTX03383 KLF2 antibody.  
Dilution : 1:200



For full product information, images and publications, please visit our [website](#).