



# SZABO SCANDIC

Part of Europa Biosite

## Produktinformation



Forschungsprodukte & Biochemikalien



Zellkultur & Verbrauchsmaterial



Diagnostik & molekulare Diagnostik



Laborgeräte & Service

Weitere Information auf den folgenden Seiten!  
See the following pages for more information!



### Lieferung & Zahlungsart

siehe unsere [Liefer- und Versandbedingungen](#)

### Zuschläge

- Mindermengenzuschlag
- Trockeneiszuschlag
- Gefahrgutzuschlag
- Expressversand

### SZABO-SCANDIC HandelsgmbH

Quellenstraße 110, A-1100 Wien

T. +43(0)1 489 3961-0

F. +43(0)1 489 3961-7

[mail@szabo-scandic.com](mailto:mail@szabo-scandic.com)

[www.szabo-scandic.com](http://www.szabo-scandic.com)

[linkedin.com/company/szaboscandic](https://www.linkedin.com/company/szaboscandic)

## Goat anti-Mouse IgM (mu chain) antibody, pre-adsorbed

**Cat. No. GTX03389**

<b>Host</b>	Goat
<b>Clonality</b>	Polyclonal
<b>Isotype</b>	IgG
<b>Application</b>	WB, ICC/IF, IHC-P, IHC-Fr, FACS, IP, ELISA, EM
<b>Reactivity</b>	Mouse

Package  
500 µg

## APPLICATION

**Application Note**

\*Optimal dilutions/concentrations should be determined by the researcher.

Suggested dilution	Recommended dilution
WB	Assay dependent
ICC/IF	Assay dependent
IHC-P	Assay dependent
IHC-Fr	Assay dependent
FACS	Assay dependent
IP	Assay dependent
ELISA	Assay dependent
EM	Assay dependent

Not tested in other applications.

**Product Note**

Preadsorbed with Mouse IgG and IgA, human immunoglobulins, and pooled sera. May react with immunoglobulins from other species.

## PROPERTIES

<b>Form</b>	Liquid
<b>Buffer</b>	Borate buffered saline pH 8.2
<b>Preservative</b>	No preservative
<b>Storage</b>	Store as concentrated solution. Centrifuge briefly prior to opening vial. For short-term storage (1-2 weeks), store at 4°C. For long-term storage, aliquot and store at -20°C or below. Avoid multiple freeze-thaw cycles.
<b>Concentration</b>	1 mg/ml (Please refer to the vial label for the specific concentration.)
<b>Immunogen</b>	Pooled antisera from goats hyperimmunized with mouse IgM
<b>Purification</b>	Purified by antigen-affinity chromatography



For full product information, images and publications, please visit our [website](#).

Date 2023 / 07 / 27 Page 1 of 2

**Conjugation**

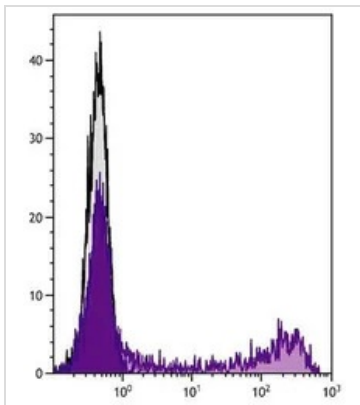
Unconjugated

**Note**

For laboratory research use only. Not for any clinical, therapeutic, or diagnostic use in humans or animals. Not for animal or human consumption.

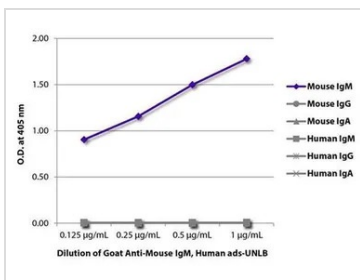
Purchasers shall not, and agree not to enable third parties to, analyze, copy, reverse engineer or otherwise attempt to determine the structure or sequence of the product.

DATA IMAGES



**GTX03389 FACS Image**

FACS analysis of Human peripheral blood lymphocytes using Mouse anti-Human CD57 antibody followed by GTX03389 Goat anti-Mouse IgM (mu chain) antibody, pre-adsorbed and Mouse Anti-Goat IgG Fc-AF488.



**GTX03389 ELISA Image**

ELISA analysis of purified mouse IgM, IgG, IgA, and human IgM, IgG, IgA using serially diluted GTX03389 Goat anti-Mouse IgM (mu chain) antibody, pre-adsorbed.



For full product information, images and publications, please visit our [website](#).