



SZABO SCANDIC

Part of Europa Biosite

Produktinformation



Forschungsprodukte & Biochemikalien



Zellkultur & Verbrauchsmaterial



Diagnostik & molekulare Diagnostik



Laborgeräte & Service

Weitere Information auf den folgenden Seiten!
See the following pages for more information!



Lieferung & Zahlungsart

siehe unsere [Liefer- und Versandbedingungen](#)

Zuschläge

- Mindermengenzuschlag
- Trockeneiszuschlag
- Gefahrgutzuschlag
- Expressversand

SZABO-SCANDIC HandelsgmbH

Quellenstraße 110, A-1100 Wien

T. +43(0)1 489 3961-0

F. +43(0)1 489 3961-7

mail@szabo-scandic.com

www.szabo-scandic.com

[linkedin.com/company/szaboscandic](https://www.linkedin.com/company/szaboscandic) 

GATA6 antibody

Cat. No. GTX03398

Host	Rabbit
Clonality	Polyclonal
Isotype	IgG
Application	WB
Reactivity	Mouse, Rat

Package
400 µl

APPLICATION

Application Note

*Optimal dilutions/concentrations should be determined by the researcher.

Suggested dilution	Recommended dilution
--------------------	----------------------

WB	1:1000
----	--------

Not tested in other applications.

Calculated MW	59 kDa. (Note)
---------------	----------------------------------

PROPERTIES

Form	Liquid
------	--------

Buffer	PBS
--------	-----

Preservative	0.09% Sodium azide
--------------	--------------------

Storage	Store as concentrated solution. Centrifuge briefly prior to opening vial. For short-term storage (1-2 weeks), store at 4°C. For long-term storage, aliquot and store at -20°C or below. Avoid multiple freeze-thaw cycles.
---------	----------------------------------------------------------------------------------------------------------------------------------------------------------------------------------------------------------------------------

Concentration	Batch dependent (Please refer to the vial label for the specific concentration.)
---------------	----------------------------------------------------------------------------------

Immunogen	This Mouse Gata6 antibody is generated from a rabbit immunized with a KLH conjugated synthetic peptide between 544-577 amino acids from the C-terminal region of Mouse Gata6.
-----------	-------------------------------------------------------------------------------------------------------------------------------------------------------------------------------

Purification	Protein A purified followed by antigen-affinity chromatography
--------------	----------------------------------------------------------------

Conjugation	Unconjugated
-------------	--------------

Note

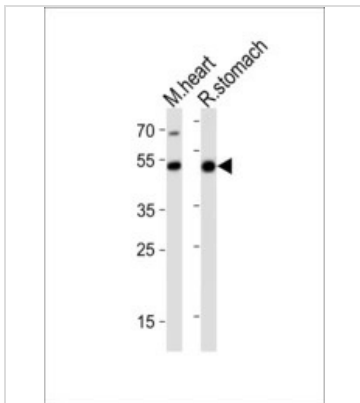
For laboratory research use only. Not for any clinical, therapeutic, or diagnostic use in humans or animals. Not for animal or human consumption.

Purchasers shall not, and agree not to enable third parties to, analyze, copy, reverse engineer or otherwise attempt to determine the structure or sequence of the product.



For full product information, images and publications, please visit our [website](#).

DATA IMAGES

**GTX03398 WB Image**

WB analysis of mouse heart and rat stomach tissue lysate using GTX03398 GATA6 antibody.

Dilution : 1:1000

Loading : 20 μ g per lane



For full product information, images and publications, please visit our [website](#).