



SZABO SCANDIC

Part of Europa Biosite

Produktinformation



Forschungsprodukte & Biochemikalien



Zellkultur & Verbrauchsmaterial



Diagnostik & molekulare Diagnostik



Laborgeräte & Service

Weitere Information auf den folgenden Seiten!
See the following pages for more information!



Lieferung & Zahlungsart

siehe unsere [Liefer- und Versandbedingungen](#)

Zuschläge

- Mindermengenzuschlag
- Trockeneiszuschlag
- Gefahrgutzuschlag
- Expressversand

SZABO-SCANDIC HandelsgmbH

Quellenstraße 110, A-1100 Wien

T. +43(0)1 489 3961-0

F. +43(0)1 489 3961-7

mail@szabo-scandic.com

www.szabo-scandic.com

[linkedin.com/company/szaboscandic](https://www.linkedin.com/company/szaboscandic) 

MC1 Receptor antibody

Cat. No. GTX03405

Host	Rabbit
Clonality	Polyclonal
Isotype	IgG
Application	WB, ICC/IF, IHC-P
Reactivity	Human, Rat

Package
50 µl

APPLICATION

Application Note

*Optimal dilutions/concentrations should be determined by the researcher.

Suggested dilution	Recommended dilution
WB	Assay dependent
ICC/IF	Assay dependent
IHC-P	Assay dependent

Not tested in other applications.

Calculated MW 35 kDa. ([Note](#))

Product Note We do not recommend use of this product for Mouse samples.

PROPERTIES

Form	Liquid
Buffer	PBS pH 7.4, 1% BSA
Preservative	0.05% sodium azide
Storage	Store as concentrated solution. Centrifuge briefly prior to opening vial. For short-term storage (1-2 weeks), store at 4°C. For long-term storage, aliquot and store at -20°C or below. Avoid multiple freeze-thaw cycles.
Concentration	0.6 mg/ml (Please refer to the vial label for the specific concentration.)
Immunogen	Peptide (C)HAQGIARLHKRQRPVH, corresponding to amino acid residues 217-232 of human MC1R (3rd intracellular loop).
Purification	Purified by antigen-affinity chromatography
Conjugation	Unconjugated



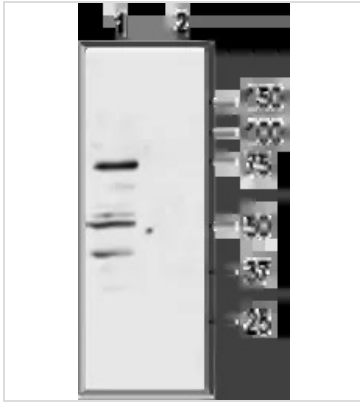
For full product information, images and publications, please visit our [website](#).

For laboratory research use only. Not for any clinical, therapeutic, or diagnostic use in humans or animals. Not for animal or human consumption.

Note

Purchasers shall not, and agree not to enable third parties to, analyze, copy, reverse engineer or otherwise attempt to determine the structure or sequence of the product.

DATA IMAGES

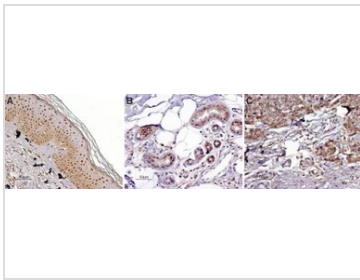
**GTX03405 WB Image**

WB analysis of rat adrenal tissue lysates using GTX03405 MC1 Receptor antibody.

Lane 1 : Primary antibody

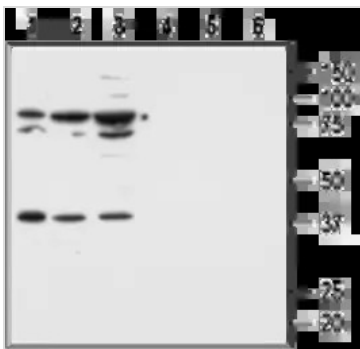
Lane 2 : Primary antibody preincubated with MC1 Receptor Blocking Peptide

Dilution : 1:400

**GTX03405 IHC-P Image**

IHC-P analysis of normal skin and melanoma tissue using GTX03405 MC1 Receptor antibody. MCR1 staining red-brown color is highly specific in A. epidermal cells, B. eccrine sweat gland cells and C. melanoma cells.

Dilution : 1:100

**GTX03405 WB Image**

WB analysis of Malme-3 (lanes 1 and 4), Malme-3M (lanes 2 and 5), and A875 (lanes 3 and 6) cell lysates using GTX03405 MC1 Receptor antibody.

Lane 1-3 : Primary antibody

Lane 4-6 : Primary antibody preincubated with MC1 Receptor Blocking Peptide

Dilution : 1:500



For full product information, images and publications, please visit our [website](#).