



SZABO SCANDIC

Part of Europa Biosite

Produktinformation



Forschungsprodukte & Biochemikalien



Zellkultur & Verbrauchsmaterial



Diagnostik & molekulare Diagnostik



Laborgeräte & Service

Weitere Information auf den folgenden Seiten!
See the following pages for more information!



Lieferung & Zahlungsart

siehe unsere [Liefer- und Versandbedingungen](#)

Zuschläge

- Mindermengenzuschlag
- Trockeneiszuschlag
- Gefahrgutzuschlag
- Expressversand

SZABO-SCANDIC HandelsgmbH

Quellenstraße 110, A-1100 Wien

T. +43(0)1 489 3961-0

F. +43(0)1 489 3961-7

mail@szabo-scandic.com

www.szabo-scandic.com

[linkedin.com/company/szaboscandic](https://www.linkedin.com/company/szaboscandic) 

GAPDH antibody [GT1355]

Cat. No. GTX03407

Host	Rabbit
Clonality	Monoclonal
Isotype	IgG
Application	WB, ICC/IF, IHC-P
Reactivity	Human, Mouse, Rat

Package
100 µl

APPLICATION

Application Note

*Optimal dilutions/concentrations should be determined by the researcher.

Suggested dilution	Recommended dilution
WB	Assay dependent
ICC/IF	Assay dependent
IHC-P	Assay dependent

Not tested in other applications.

Calculated MW 36 kDa. ([Note](#))

PROPERTIES

Form	Liquid
Buffer	PBS pH7.3, 0.05% BSA, 50% glycerol
Preservative	0.02% Sodium azide
Storage	Store as concentrated solution. Centrifuge briefly prior to opening vial. For short-term storage (1-2 weeks), store at 4°C. For long-term storage, aliquot and store at -20°C or below. Avoid multiple freeze-thaw cycles.
Concentration	Batch dependent (Please refer to the vial label for the specific concentration.)
Immunogen	A synthesized peptide derived from human GAPDH
Purification	Purified by affinity chromatography
Conjugation	Unconjugated

Note

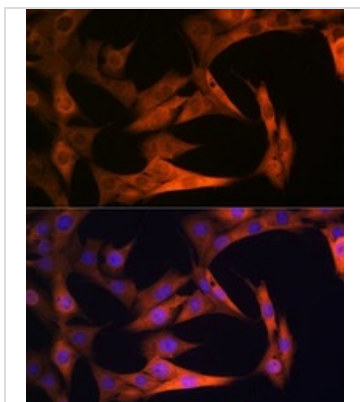
For laboratory research use only. Not for any clinical, therapeutic, or diagnostic use in humans or animals. Not for animal or human consumption.

Purchasers shall not, and agree not to enable third parties to, analyze, copy, reverse engineer or otherwise attempt to determine the structure or sequence of the product.



For full product information, images and publications, please visit our [website](#).

DATA IMAGES



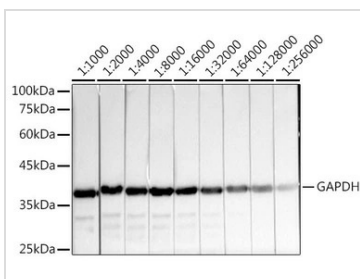
GTX03407 ICC/IF Image

ICC/IF analysis of NIH-3T3 cells using GTX03407 GAPDH antibody [GT1355].

Red : Primary antibody

Blue : DAPI for nuclear staining

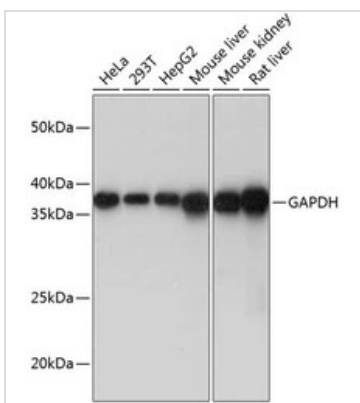
Dilution : 1:100



GTX03407 WB Image

WB analysis of HeLa cell lysates using serially diluted GTX03407 GAPDH antibody [GT1355].

Loading : 25µg per lane

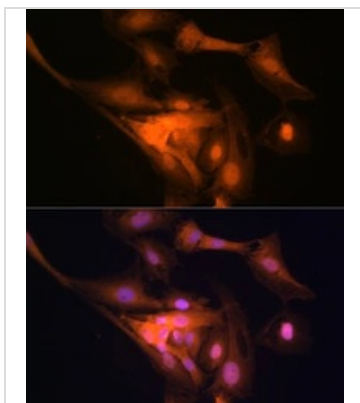


GTX03407 WB Image

WB analysis of various sample lysates using GTX03407 GAPDH antibody [GT1355].

Dilution : 1:1000

Loading : 25µg per lane



GTX03407 ICC/IF Image

ICC/IF analysis of C6 cells using GTX03407 GAPDH antibody [GT1355].

Red : Primary antibody

Blue : DAPI for nuclear staining

Dilution : 1:100



For full product information, images and publications, please visit our [website](#).