



# SZABO SCANDIC

Part of Europa Biosite

## Produktinformation



Forschungsprodukte & Biochemikalien



Zellkultur & Verbrauchsmaterial



Diagnostik & molekulare Diagnostik



Laborgeräte & Service

Weitere Information auf den folgenden Seiten!  
See the following pages for more information!



### Lieferung & Zahlungsart

siehe unsere [Liefer- und Versandbedingungen](#)

### Zuschläge

- Mindermengenzuschlag
- Trockeneiszuschlag
- Gefahrgutzuschlag
- Expressversand

### SZABO-SCANDIC HandelsgmbH

Quellenstraße 110, A-1100 Wien

T. +43(0)1 489 3961-0

F. +43(0)1 489 3961-7

[mail@szabo-scandic.com](mailto:mail@szabo-scandic.com)

[www.szabo-scandic.com](http://www.szabo-scandic.com)

[linkedin.com/company/szaboscandic](https://www.linkedin.com/company/szaboscandic) 

## MAN1B1 antibody [3C2]

**Cat. No. GTX03413**

<b>Host</b>	Mouse
<b>Clonality</b>	Monoclonal
<b>Isotype</b>	IgG1
<b>Application</b>	WB, ICC/IF, IHC-P, IP, ELISA
<b>Reactivity</b>	Human

Reference ( 1 )

Package

100 µl

## APPLICATION

**Application Note**

\*Optimal dilutions/concentrations should be determined by the researcher.

Suggested dilution	Recommended dilution
WB	1:500-1:1000
ICC/IF	1:100
IHC-P	1:200
IP	1:10-1:100
ELISA	1:1000

**Note : Antigen retrieval with sodium citrate buffer (pH 6.0) is recommended**

Not tested in other applications.

**Calculated MW** 80 kDa. ( [Note](#) )**Product Note** We do not recommend use of this product for Mouse samples.  
Knockdown/Knockout validation was supported by references (PMID: 26205822).

## PROPERTIES

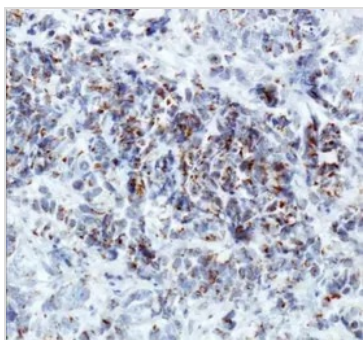
<b>Form</b>	Liquid
<b>Buffer</b>	Tris-Glycine pH 7.5, 0.15M NaCl
<b>Preservative</b>	0.05% sodium azide
<b>Storage</b>	Store as concentrated solution. Centrifuge briefly prior to opening vial. For short-term storage (1-2 weeks), store at 4°C. For long-term storage, aliquot and store at -20°C or below. Avoid multiple freeze-thaw cycles.
<b>Concentration</b>	1 mg/ml (Please refer to the vial label for the specific concentration.)
<b>Immunogen</b>	Full length human recombinant ERMan1 [Swiss-Prot# Q9UKM7].
<b>Purification</b>	Protein G purified

For full product information, images and publications, please visit our [website](#).

**Conjugation** Unconjugated

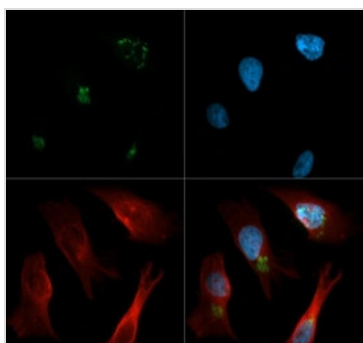
**Note** For laboratory research use only. Not for any clinical, therapeutic, or diagnostic use in humans or animals. Not for animal or human consumption.  
Purchasers shall not, and agree not to enable third parties to, analyze, copy, reverse engineer or otherwise attempt to determine the structure or sequence of the product.

DATA IMAGES



**GTX03413 IHC-P Image**

IHC-P analysis of human breast cancer using GTX03413 MAN1B1 antibody [3C2].



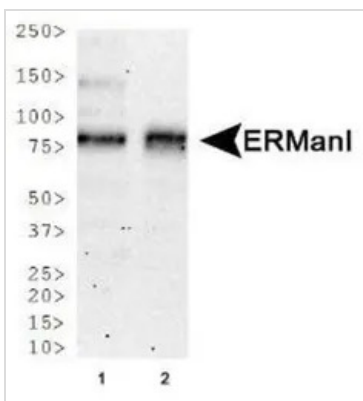
**GTX03413 ICC/IF Image**

ICC/IF analysis of HeLa cells using GTX03413 MAN1B1 antibody [3C2].

Green : Primary antibody

Red : alpha tubulin

Blue : DAPI



**GTX03413 WB Image**

WB analysis of various sample lysates using GTX03413 MAN1B1 antibody [3C2].

Lane 1 : NTERA-2 whole cell lysate

Lane 2 : A431 whole cell lysate



For full product information, images and publications, please visit our [website](#).