



SZABO SCANDIC

Part of Europa Biosite

Produktinformation



Forschungsprodukte & Biochemikalien



Zellkultur & Verbrauchsmaterial



Diagnostik & molekulare Diagnostik



Laborgeräte & Service

Weitere Information auf den folgenden Seiten!
See the following pages for more information!



Lieferung & Zahlungsart

siehe unsere [Liefer- und Versandbedingungen](#)

Zuschläge

- Mindermengenzuschlag
- Trockeneiszuschlag
- Gefahrgutzuschlag
- Expressversand

SZABO-SCANDIC HandelsgmbH

Quellenstraße 110, A-1100 Wien

T. +43(0)1 489 3961-0

F. +43(0)1 489 3961-7

mail@szabo-scandic.com

www.szabo-scandic.com

[linkedin.com/company/szaboscandic](https://www.linkedin.com/company/szaboscandic) 

TPCN2 antibody

Cat. No. GTX03430

Host	Rabbit
Clonality	Polyclonal
Isotype	IgG
Application	WB, ICC/IF, IHC-Fr
Reactivity	Human, Mouse, Rat

Package
50 µl

APPLICATION

Application Note

*Optimal dilutions/concentrations should be determined by the researcher.

Suggested dilution	Recommended dilution
WB	Assay dependent
ICC/IF	Assay dependent
IHC-Fr	Assay dependent

Not tested in other applications.

Calculated MW 84 kDa. ([Note](#))

PROPERTIES

Form	Liquid
Buffer	PBS pH 7.4, 1% BSA
Preservative	0.05% sodium azide
Storage	Store as concentrated solution. Centrifuge briefly prior to opening vial. For short-term storage (1-2 weeks), store at 4°C. For long-term storage, aliquot and store at -20°C or below. Avoid multiple freeze-thaw cycles.
Concentration	0.8 mg/ml (Please refer to the vial label for the specific concentration.)
Immunogen	Peptide KKTLKSIRW(S)LPE(C), corresponding to amino acid residues 187-199 (2nd luminal loop) of mouse TPCN2 with replacement of amino acid 192 with serine (S) (Accession Q8BWC0).
Purification	Purified by antigen-affinity chromatography
Conjugation	Unconjugated

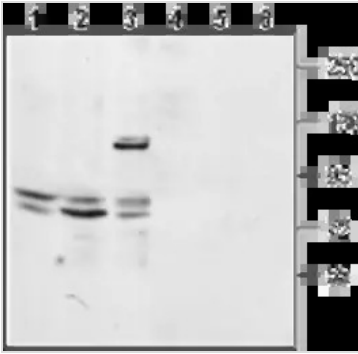
Note For laboratory research use only. Not for any clinical, therapeutic, or diagnostic use in humans or animals. Not for animal or human consumption.

Purchasers shall not, and agree not to enable third parties to, analyze, copy, reverse engineer or otherwise attempt to determine the structure or sequence of the product.



For full product information, images and publications, please visit our [website](#).

DATA IMAGES

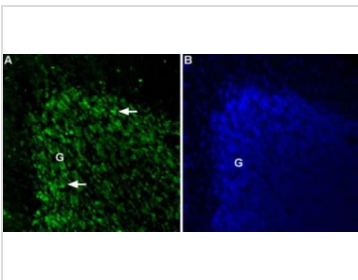
**GTX03430 WB Image**

WB analysis of mouse kidney tissue lysates (lanes 1 and 4), rat lung membrane fractions (lanes 2 and 5), and HEK293 cell lysates (lanes 3 and 6) using GTX03430 TPCN2 antibody.

Lane 1-3 : Primary antibody

Lane 4-6 : Primary antibody preincubated with TPCN2 blocking Peptide

Dilution : 1:200

**GTX03430 IHC-Fr Image**

IHC-Fr analysis of rat cerebellum tissue using GTX03430 TPCN2 antibody. TPCN2 positive cells (green) appear in the granule cell layer (G) of the cerebellum (arrows).

Green : Primary antibody

Blue : DAPI



For full product information, images and publications, please visit our [website](#).