



# SZABO SCANDIC

Part of Europa Biosite

## Produktinformation



Forschungsprodukte & Biochemikalien



Zellkultur & Verbrauchsmaterial



Diagnostik & molekulare Diagnostik



Laborgeräte & Service

Weitere Information auf den folgenden Seiten!  
See the following pages for more information!



### Lieferung & Zahlungsart

siehe unsere [Liefer- und Versandbedingungen](#)

### Zuschläge

- Mindermengenzuschlag
- Trockeneiszuschlag
- Gefahrgutzuschlag
- Expressversand

### SZABO-SCANDIC HandelsgmbH

Quellenstraße 110, A-1100 Wien

T. +43(0)1 489 3961-0

F. +43(0)1 489 3961-7

[mail@szabo-scandic.com](mailto:mail@szabo-scandic.com)

[www.szabo-scandic.com](http://www.szabo-scandic.com)

[linkedin.com/company/szaboscandic](https://www.linkedin.com/company/szaboscandic) 

## Ki67 (phospho Thr1335) antibody

**Cat. No. GTX03435**

<b>Host</b>	Rabbit
<b>Clonality</b>	Polyclonal
<b>Isotype</b>	IgG
<b>Application</b>	WB, IHC-P
<b>Reactivity</b>	Human, Mouse, Rat

**Package**  
100 µl

## APPLICATION

**Application Note**

\*Optimal dilutions/concentrations should be determined by the researcher.

Suggested dilution	Recommended dilution
WB	1:500-1:2000
IHC-P	1:50-1:200

Not tested in other applications.

**Calculated MW** 359 kDa. ([Note](#))

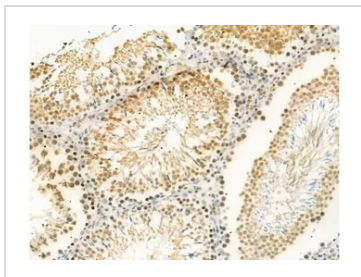
## PROPERTIES

<b>Form</b>	Liquid
<b>Buffer</b>	PBS pH 7.4, 150mM NaCl, 50% glycerol
<b>Preservative</b>	0.02% Sodium azide
<b>Storage</b>	Store as concentrated solution. Centrifuge briefly prior to opening vial. For short-term storage (1-2 weeks), store at 4°C. For long-term storage, aliquot and store at -20°C or below. Avoid multiple freeze-thaw cycles.
<b>Concentration</b>	1 mg/ml (Please refer to the vial label for the specific concentration.)
<b>Immunogen</b>	A synthesized peptide derived from human Ki67 around the phosphorylation site of Thr1335.
<b>Purification</b>	Purified by sequential chromatography on phospho-peptide and non-phospho-peptide affinity columns From serum
<b>Conjugation</b>	Unconjugated
<b>Note</b>	For laboratory research use only. Not for any clinical, therapeutic, or diagnostic use in humans or animals. Not for animal or human consumption.  Purchasers shall not, and agree not to enable third parties to, analyze, copy, reverse engineer or otherwise attempt to determine the structure or sequence of the product.

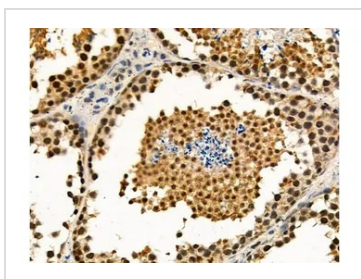


For full product information, images and publications, please visit our [website](#).

## DATA IMAGES

**GTX03435 IHC-P Image**

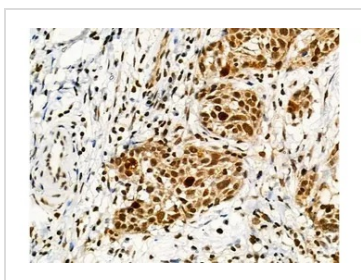
IHC-P analysis of rat testis tissue using GTX03435 Ki67 (phospho Thr1335) antibody.  
Antigen retrieval : Heat mediated antigen retrieval step in citrate buffer was performed.  
Dilution : 1:100

**GTX03435 IHC-P Image**

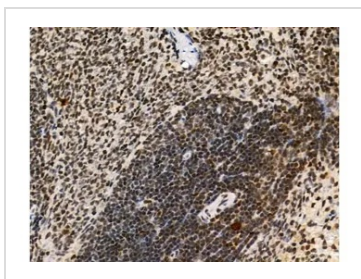
IHC-P analysis of mouse testis tissue using GTX03435 Ki67 (phospho Thr1335) antibody.  
Antigen retrieval : Heat mediated antigen retrieval step in citrate buffer was performed.  
Dilution : 1:100

**GTX03435 IHC-P Image**

IHC-P analysis of mouse heart tissue using GTX03435 Ki67 (phospho Thr1335) antibody.  
Antigen retrieval : Heat mediated antigen retrieval step in citrate buffer was performed.  
Dilution : 1:100

**GTX03435 IHC-P Image**

IHC-P analysis of human ovarian cancer tissue using GTX03435 Ki67 (phospho Thr1335) antibody.  
Antigen retrieval : Heat mediated antigen retrieval step in citrate buffer was performed.  
Dilution : 1:100

**GTX03435 IHC-P Image**

IHC-P analysis of rat spleen tissue using GTX03435 Ki67 (phospho Thr1335) antibody.  
Antigen retrieval : Heat mediated antigen retrieval step in citrate buffer was performed.  
Dilution : 1:100



For full product information, images and publications, please visit our [website](#).