



SZABO SCANDIC

Part of Europa Biosite

Produktinformation



Forschungsprodukte & Biochemikalien



Zellkultur & Verbrauchsmaterial



Diagnostik & molekulare Diagnostik



Laborgeräte & Service

Weitere Information auf den folgenden Seiten!
See the following pages for more information!



Lieferung & Zahlungsart

siehe unsere [Liefer- und Versandbedingungen](#)

Zuschläge

- Mindermengenzuschlag
- Trockeneiszuschlag
- Gefahrgutzuschlag
- Expressversand

SZABO-SCANDIC HandelsgmbH

Quellenstraße 110, A-1100 Wien

T. +43(0)1 489 3961-0

F. +43(0)1 489 3961-7

mail@szabo-scandic.com

www.szabo-scandic.com

[linkedin.com/company/szaboscandic](https://www.linkedin.com/company/szaboscandic) 

DLL3 antibody

Cat. No. GTX03439

Host	Rabbit
Clonality	Polyclonal
Isotype	IgG
Application	WB, ICC/IF, IHC-P
Reactivity	Human, Mouse, Rat

Package
200 µl

APPLICATION

Application Note

*Optimal dilutions/concentrations should be determined by the researcher.

Suggested dilution	Recommended dilution
WB	1:2000
ICC/IF	1:25
IHC-P	1:500

Not tested in other applications.

Calculated MW 65 kDa. ([Note](#))

PROPERTIES

Form	Liquid
Buffer	PBS
Preservative	0.09% sodium azide
Storage	Store as concentrated solution. Centrifuge briefly prior to opening vial. For short-term storage (1-2 weeks), store at 4°C. For long-term storage, aliquot and store at -20°C or below. Avoid multiple freeze-thaw cycles.
Concentration	Batch dependent (Please refer to the vial label for the specific concentration.)
Immunogen	KLH conjugated synthetic peptide between 519-548 amino acids from the C-terminal region of human DLL3.
Purification	Protein A purified followed by antigen-affinity chromatography
Conjugation	Unconjugated

Note

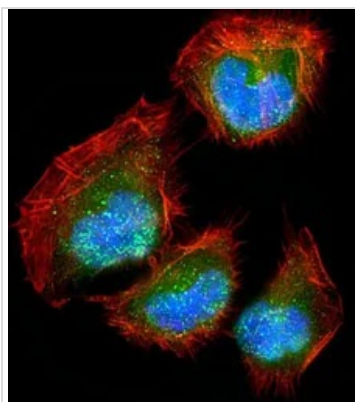
For laboratory research use only. Not for any clinical, therapeutic, or diagnostic use in humans or animals. Not for animal or human consumption.

Purchasers shall not, and agree not to enable third parties to, analyze, copy, reverse engineer or otherwise attempt to determine the structure or sequence of the product.



For full product information, images and publications, please visit our [website](#).

DATA IMAGES



GTX03439 ICC/IF Image

ICC/IF analysis of 4% PFA-fixed U2OS cells using GTX03439 DLL3 antibody.

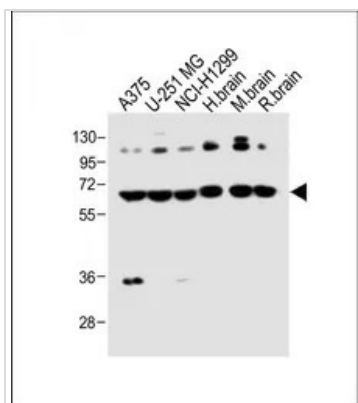
Green : Primary antibody

Red : Actin

Blue : DAPI

Permeabilization : 0.1% Triton X-100

Dilution : 1:25



GTX03439 WB Image

WB analysis of various sample lysates using GTX03439 DLL3 antibody.

Lane 1 : A375 whole cell lysate

Lane 2 : U-251 MG whole cell lysate

Lane 3 : NCI-H1299 whole cell lysate

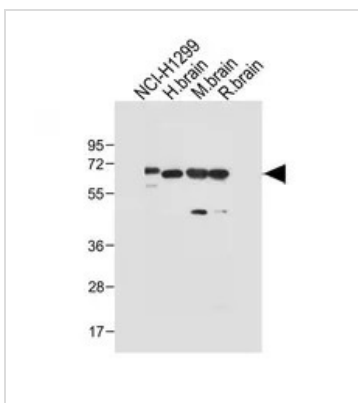
Lane 4 : Human brain tissue lysate

Lane 5 : Mouse brain tissue lysate

Lane 6 : Rat brain tissue lysate

Dilution : 1:1000

Loading : 20 µg per lane



GTX03439 WB Image

WB analysis of various sample lysates using GTX03439 DLL3 antibody.

Lane 1 : NCI-H1299 whole cell lysate

Lane 2 : Human brain tissue lysate

Lane 3 : Mouse brain tissue lysate

Lane 4 : Rat brain tissue lysate

Dilution : 1:1000

Loading : 20 µg per lane



For full product information, images and publications, please visit our [website](#).