



SZABO SCANDIC

Part of Europa Biosite

Produktinformation



Forschungsprodukte & Biochemikalien



Zellkultur & Verbrauchsmaterial



Diagnostik & molekulare Diagnostik



Laborgeräte & Service

Weitere Information auf den folgenden Seiten!
See the following pages for more information!



Lieferung & Zahlungsart

siehe unsere [Liefer- und Versandbedingungen](#)

Zuschläge

- Mindermengenzuschlag
- Trockeneiszuschlag
- Gefahrgutzuschlag
- Expressversand

SZABO-SCANDIC HandelsgmbH

Quellenstraße 110, A-1100 Wien

T. +43(0)1 489 3961-0

F. +43(0)1 489 3961-7

mail@szabo-scandic.com

www.szabo-scandic.com

[linkedin.com/company/szaboscandic](https://www.linkedin.com/company/szaboscandic) 

A-Myb antibody

Cat. No. GTX03441

Host	Rabbit
Clonality	Polyclonal
Isotype	IgG
Application	WB, ICC/IF
Reactivity	Human, Mouse

Package
100 µl

APPLICATION

Application Note

*Optimal dilutions/concentrations should be determined by the researcher.

Suggested dilution	Recommended dilution
WB	1:1000
ICC/IF	1:100-1:500

Not tested in other applications.

Calculated MW 86 kDa. ([Note](#))

PROPERTIES

Form	Liquid
Buffer	PBS, 150mM NaCl, 50% Glycerol
Preservative	0.02% sodium azide
Storage	Store as concentrated solution. Centrifuge briefly prior to opening vial. For short-term storage (1-2 weeks), store at 4°C. For long-term storage, aliquot and store at -20°C or below. Avoid multiple freeze-thaw cycles.
Concentration	1 mg/ml (Please refer to the vial label for the specific concentration.)
Immunogen	A synthesized peptide derived from human MYBL1(Accession P10243), corresponding to amino acid residues T249-S277.
Purification	Purified by antigen-affinity chromatography From serum
Conjugation	Unconjugated

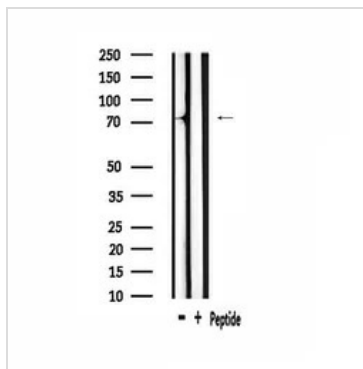
Note For laboratory research use only. Not for any clinical, therapeutic, or diagnostic use in humans or animals. Not for animal or human consumption.

Purchasers shall not, and agree not to enable third parties to, analyze, copy, reverse engineer or otherwise attempt to determine the structure or sequence of the product.



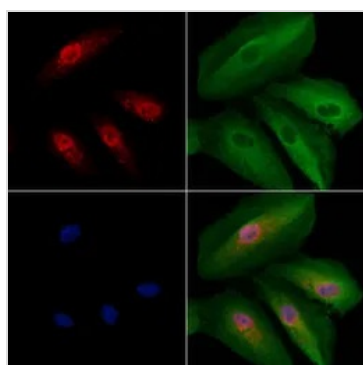
For full product information, images and publications, please visit our [website](#).

DATA IMAGES



GTX03441 WB Image

WB analysis of mouse muscle tissue lysate using GTX03441 A-Myb Antibody.



GTX03441 ICC/IF Image

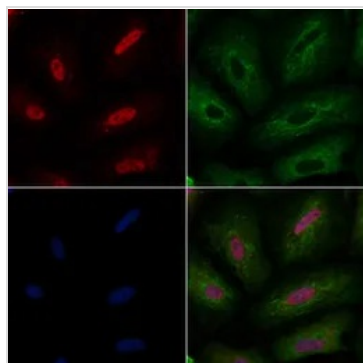
ICC/IF analysis of PFA-fixed A549 cells using GTX03441 A-Myb antibody.

Permeabilization : 0.1% Triton X-100

Red : Primary antibody

Green : beta tubulin

Blue : DAPI



GTX03441 ICC/IF Image

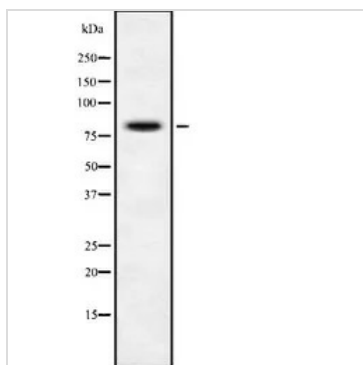
ICC/IF analysis of PFA-fixed A549 cells using GTX03441 A-Myb antibody.

Permeabilization : 0.1% Triton X-100

Red : Primary antibody

Green : beta tubulin

Blue : DAPI



GTX03441 WB Image

WB analysis of LOVO cell lysate using GTX03441 A-Myb antibody.



For full product information, images and publications, please visit our [website](#).