



SZABO SCANDIC

Part of Europa Biosite

Produktinformation



Forschungsprodukte & Biochemikalien



Zellkultur & Verbrauchsmaterial



Diagnostik & molekulare Diagnostik



Laborgeräte & Service

Weitere Information auf den folgenden Seiten!
See the following pages for more information!



Lieferung & Zahlungsart

siehe unsere [Liefer- und Versandbedingungen](#)

Zuschläge

- Mindermengenzuschlag
- Trockeneiszuschlag
- Gefahrgutzuschlag
- Expressversand

SZABO-SCANDIC HandelsgmbH

Quellenstraße 110, A-1100 Wien

T. +43(0)1 489 3961-0

F. +43(0)1 489 3961-7

mail@szabo-scandic.com

www.szabo-scandic.com

[linkedin.com/company/szaboscandic](https://www.linkedin.com/company/szaboscandic) 

SMCR7 antibody

Cat. No. GTX03455

Host	Rabbit
Clonality	Polyclonal
Isotype	IgG
Application	WB, ICC/IF, IHC-P
Reactivity	Human, Mouse, Rat, Monkey

Package
100 µl

APPLICATION

Application Note

*Optimal dilutions/concentrations should be determined by the researcher.

Suggested dilution	Recommended dilution
WB	1:500-1:2000
ICC/IF	1:100-1:500
IHC-P	1:50-1:200

Not tested in other applications.

Calculated MW 49 kDa. ([Note](#))

PROPERTIES

Form	Liquid
Buffer	PBS, 150mM NaCl, 50% Glycerol
Preservative	0.02% sodium azide
Storage	Store as concentrated solution. Centrifuge briefly prior to opening vial. For short-term storage (1-2 weeks), store at 4°C. For long-term storage, aliquot and store at -20°C or below. Avoid multiple freeze-thaw cycles.
Concentration	1 mg/ml (Please refer to the vial label for the specific concentration.)
Immunogen	A synthesized peptide derived from human MIEF2(Accession Q96C03), corresponding to amino acid residues Y335-V363.
Purification	Purified by antigen-affinity chromatography From serum
Conjugation	Unconjugated

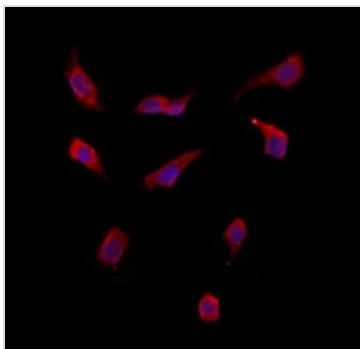
Note For laboratory research use only. Not for any clinical, therapeutic, or diagnostic use in humans or animals. Not for animal or human consumption.

Purchasers shall not, and agree not to enable third parties to, analyze, copy, reverse engineer or otherwise attempt to determine the structure or sequence of the product.



For full product information, images and publications, please visit our [website](#).

DATA IMAGES

**GTX03455 ICC/IF Image**

ICC/IF analysis of PFA-fixed HepG2 cells using GTX03455 SMCR7 antibody.

Red : Primary antibody

Blue : DAPI

Permeabilization : 0.1% Triton X-100

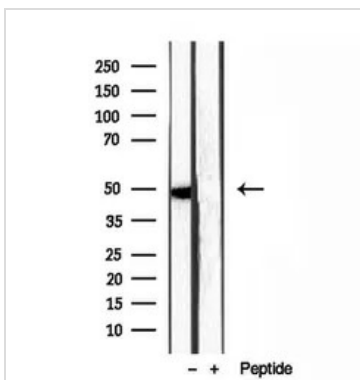
Dilution : 1:200

**GTX03455 IHC-P Image**

IHC-P analysis of rat muscle tissue using GTX03455 SMCR7 antibody.

Antigen retrieval : Heat mediated antigen retrieval step in citrate buffer was performed.

Dilution : 1:100

**GTX03455 WB Image**

WB analysis of HT-1080 whole cell lysate using GTX03455 SMCR7 antibody.

**GTX03455 IHC-P Image**

IHC-P analysis of rat skin tissue using GTX03455 SMCR7 antibody.

Antigen retrieval : Heat mediated antigen retrieval step in citrate buffer was performed.

Dilution : 1:100



For full product information, images and publications, please visit our [website](#).