



# SZABO SCANDIC

Part of Europa Biosite

## Produktinformation



Forschungsprodukte & Biochemikalien



Zellkultur & Verbrauchsmaterial



Diagnostik & molekulare Diagnostik



Laborgeräte & Service

Weitere Information auf den folgenden Seiten!  
See the following pages for more information!



### Lieferung & Zahlungsart

siehe unsere [Liefer- und Versandbedingungen](#)

### Zuschläge

- Mindermengenzuschlag
- Trockeneiszuschlag
- Gefahrgutzuschlag
- Expressversand

### SZABO-SCANDIC HandelsgmbH

Quellenstraße 110, A-1100 Wien

T. +43(0)1 489 3961-0

F. +43(0)1 489 3961-7

[mail@szabo-scandic.com](mailto:mail@szabo-scandic.com)

[www.szabo-scandic.com](http://www.szabo-scandic.com)

[linkedin.com/company/szaboscandic](https://www.linkedin.com/company/szaboscandic) 

## Sodium/Potassium ATPase alpha 2 antibody

Cat. No. GTX03457

Host	Rabbit
Clonality	Polyclonal
Isotype	IgG
Application	WB, ICC/IF, IHC-Fr
Reactivity	Human, Mouse, Rat

Package  
50 µl

## APPLICATION

## Application Note

\*Optimal dilutions/concentrations should be determined by the researcher.

Suggested dilution	Recommended dilution
WB	1:200-1:1000
ICC/IF	Assay dependent
IHC-Fr	1:300

Not tested in other applications.

Calculated MW 113 kDa. ([Note](#))

## PROPERTIES

Form	Liquid
Buffer	PBS pH 7.4, 1% BSA
Preservative	0.05% sodium azide
Storage	Store as concentrated solution. Centrifuge briefly prior to opening vial. For short-term storage (1-2 weeks), store at 4°C. For long-term storage, aliquot and store at -20°C or below. Avoid multiple freeze-thaw cycles.
Concentration	0.8 mg/ml (Please refer to the vial label for the specific concentration.)
Immunogen	Peptide (C)REYSPAATTAENG, corresponding to amino acid residues 7-19 of rat ATP1A2 (Accession P06686). Intracellular, N-terminus.
Purification	Purified by antigen-affinity chromatography
Conjugation	Unconjugated

## Note

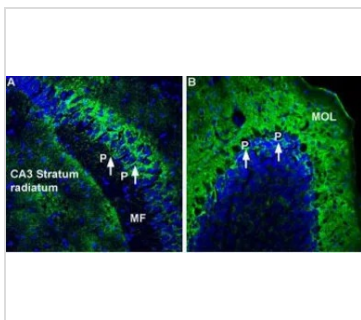
For laboratory research use only. Not for any clinical, therapeutic, or diagnostic use in humans or animals. Not for animal or human consumption.

Purchasers shall not, and agree not to enable third parties to, analyze, copy, reverse engineer or otherwise attempt to determine the structure or sequence of the product.



For full product information, images and publications, please visit our [website](#).

DATA IMAGES

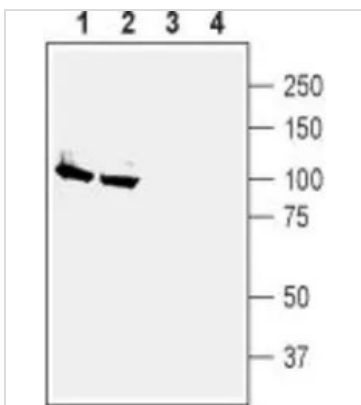


**GTX03457 IHC-Fr Image**

IHC-Fr analysis of mouse hippocampus and cerebellum tissues using GTX03457 Sodium/Potassium ATPase alpha 2 antibody.

Panel A : ATP1A2 staining (green, 1:300) in mouse hippocampal CA3 region is labeled in astrocytic processes (arrows surrounding pyramidal cells, P) and diffused staining is observed in the CA3 stratum radiatum. Note absence of staining in the mossy fiber terminal region (MF).

Panel B : Staining in mouse cerebellum shows labeling of the basket shape (arrows) under Purkinje cells (P) and diffused staining in the molecular layer (MOL).



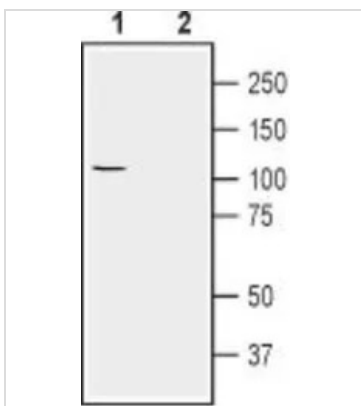
**GTX03457 WB Image**

WB analysis of rat (lanes 1 and 3) and mouse (lanes 2 and 4) brain membrane lysates using GTX03457 Sodium/Potassium ATPase alpha 2 antibody.

Lane 1, 2 : Primary antibody

Lane 3, 4 : Primary antibody preincubated with immunogen peptide

Dilution : 1:200



**GTX03457 WB Image**

WB analysis of U-87 MG whole cell lysate using GTX03457 Sodium/Potassium ATPase alpha 2 antibody.

Lane 1 : Primary antibody

Lane 2 : Primary antibody preincubated with immunogen peptide

Dilution : 1:200



For full product information, images and publications, please visit our [website](http://www.genetex.com).