



# SZABO SCANDIC

Part of Europa Biosite

## Produktinformation



Forschungsprodukte & Biochemikalien



Zellkultur & Verbrauchsmaterial



Diagnostik & molekulare Diagnostik



Laborgeräte & Service

Weitere Information auf den folgenden Seiten!  
See the following pages for more information!



### Lieferung & Zahlungsart

siehe unsere [Liefer- und Versandbedingungen](#)

### Zuschläge

- Mindermengenzuschlag
- Trockeneiszuschlag
- Gefahrgutzuschlag
- Expressversand

### SZABO-SCANDIC HandelsgmbH

Quellenstraße 110, A-1100 Wien

T. +43(0)1 489 3961-0

F. +43(0)1 489 3961-7

[mail@szabo-scandic.com](mailto:mail@szabo-scandic.com)

[www.szabo-scandic.com](http://www.szabo-scandic.com)

[linkedin.com/company/szaboscandic](https://www.linkedin.com/company/szaboscandic) 

## MATH1 antibody

Cat. No. GTX03458

Host	Rabbit
Clonality	Polyclonal
Isotype	IgG
Application	WB, IHC
Reactivity	Human, Mouse

Package  
100 µl

## APPLICATION

## Application Note

\*Optimal dilutions/concentrations should be determined by the researcher.

Suggested dilution	Recommended dilution
WB	Assay dependent
IHC	Assay dependent

Not tested in other applications.

Calculated MW 38 kDa. ([Note](#))

## PROPERTIES

Form	Liquid
Buffer	PBS, 2% sucrose
Preservative	0.09% sodium azide
Storage	Store as concentrated solution. Centrifuge briefly prior to opening vial. For short-term storage (1-2 weeks), store at 4°C. For long-term storage, aliquot and store at -20°C or below. Avoid multiple freeze-thaw cycles.
Concentration	0.5 mg/ml (Please refer to the vial label for the specific concentration.)
Immunogen	The immunogen is a synthetic peptide directed towards the middle region of human ATOH1.
Purification	Purified by affinity chromatography
Conjugation	Unconjugated

## Note

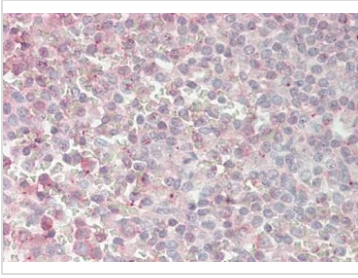
For laboratory research use only. Not for any clinical, therapeutic, or diagnostic use in humans or animals. Not for animal or human consumption.

Purchasers shall not, and agree not to enable third parties to, analyze, copy, reverse engineer or otherwise attempt to determine the structure or sequence of the product.

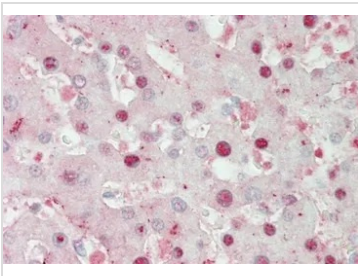


For full product information, images and publications, please visit our [website](#).

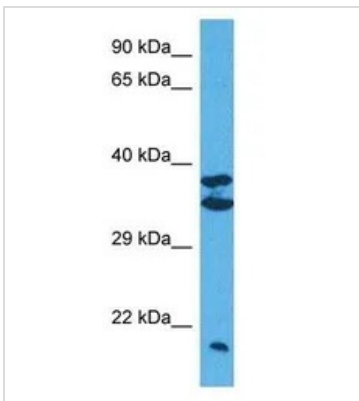
## DATA IMAGES

**GTX03458 IHC Image**

IHC analysis of spleen tissue using GTX03458 MATH1 antibody.

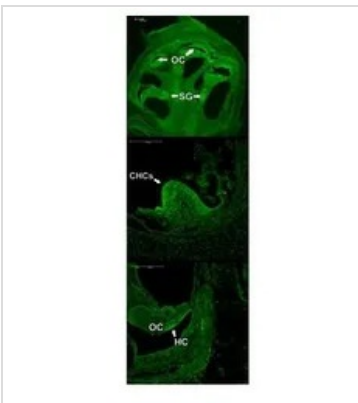
**GTX03458 IHC Image**

IHC analysis of liver tissue using GTX03458 MATH1 antibody.

**GTX03458 WB Image**

WB analysis of Jurkat whole cell lysate using GTX03458 MATH1 antibody.

Dilution : 1µg/ml

**GTX03458 IHC Image**

IHC analysis of mouse cochlea tissue using GTX03458 MATH1 antibody.



For full product information, images and publications, please visit our [website](https://www.genetex.com).