



SZABO SCANDIC

Part of Europa Biosite

Produktinformation



Forschungsprodukte & Biochemikalien



Zellkultur & Verbrauchsmaterial



Diagnostik & molekulare Diagnostik



Laborgeräte & Service

Weitere Information auf den folgenden Seiten!
See the following pages for more information!



Lieferung & Zahlungsart

siehe unsere [Liefer- und Versandbedingungen](#)

Zuschläge

- Mindermengenzuschlag
- Trockeneiszuschlag
- Gefahrgutzuschlag
- Expressversand

SZABO-SCANDIC HandelsgmbH

Quellenstraße 110, A-1100 Wien

T. +43(0)1 489 3961-0

F. +43(0)1 489 3961-7

mail@szabo-scandic.com

www.szabo-scandic.com

[linkedin.com/company/szaboscandic](https://www.linkedin.com/company/szaboscandic) 

CLN6 antibody

Cat. No. GTX03465

Host	Rabbit
Clonality	Polyclonal
Isotype	IgG
Application	WB, IHC-P
Reactivity	Human, Rat

Package
100 µl

APPLICATION

Application Note

*Optimal dilutions/concentrations should be determined by the researcher.

Suggested dilution	Recommended dilution
WB	1:500-1:1000
IHC-P	1:50-1:200

Not tested in other applications.

Calculated MW 36 kDa. ([Note](#))

PROPERTIES

Form	Liquid
Buffer	PBS pH7.2, 50% glycerol
Preservative	0.02% sodium azide
Storage	Store as concentrated solution. Centrifuge briefly prior to opening vial. For short-term storage (1-2 weeks), store at 4°C. For long-term storage, aliquot and store at -20°C or below. Avoid multiple freeze-thaw cycles.
Concentration	1 mg/ml (Please refer to the vial label for the specific concentration.)
Immunogen	Synthetic peptide, corresponding to amino acids 229-274 of Human CLN6.
Purification	Purified by antigen-affinity chromatography From serum
Purity	>95% by SDS-PAGE
Conjugation	Unconjugated

Note

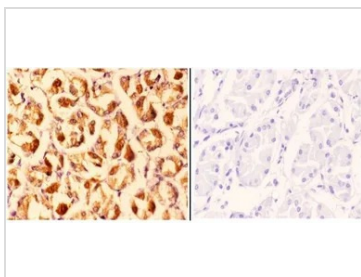
For laboratory research use only. Not for any clinical, therapeutic, or diagnostic use in humans or animals. Not for animal or human consumption.

Purchasers shall not, and agree not to enable third parties to, analyze, copy, reverse engineer or otherwise attempt to determine the structure or sequence of the product.



For full product information, images and publications, please visit our [website](#).

DATA IMAGES

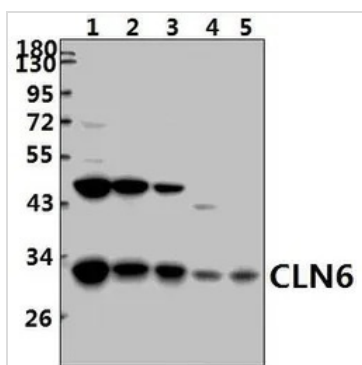
**GTX03465 IHC-P Image**

IHC-P analysis of human stomach carcinoma tissue using GTX03465 CLN6 antibody.

Left : Primary antibody

Right : Negative control; PBS instead of primary antibody.

Dilution : 1:50

**GTX03465 WB Image**

WB analysis of various sample lysates using GTX03465 CLN6 antibody.

Lane1 : SGC7901 whole cell lysate

Lane 2 : SK-OVCAR3 whole cell lysate

Lane3 : MCF-7 whole cell lysate

Lane4 : PC12 whole cell lysate

Lane5 : CT26 whole cell lysate

Dilution : 1:500

Loading : 40µg per lane



For full product information, images and publications, please visit our [website](#).