



SZABO SCANDIC

Part of Europa Biosite

Produktinformation



Forschungsprodukte & Biochemikalien



Zellkultur & Verbrauchsmaterial



Diagnostik & molekulare Diagnostik



Laborgeräte & Service

Weitere Information auf den folgenden Seiten!
See the following pages for more information!



Lieferung & Zahlungsart

siehe unsere [Liefer- und Versandbedingungen](#)

Zuschläge

- Mindermengenzuschlag
- Trockeneiszuschlag
- Gefahrgutzuschlag
- Expressversand

SZABO-SCANDIC HandelsgmbH

Quellenstraße 110, A-1100 Wien

T. +43(0)1 489 3961-0

F. +43(0)1 489 3961-7

mail@szabo-scandic.com

www.szabo-scandic.com

[linkedin.com/company/szaboscandic](https://www.linkedin.com/company/szaboscandic) 

beta 3 Adrenergic Receptor antibody

Cat. No. GTX03468

Host	Rabbit
Clonality	Polyclonal
Isotype	IgG
Application	WB, ICC/IF, FACS, ELISA
Reactivity	Human, Mouse, Rat

Package
100 µg

APPLICATION

Application Note

*Optimal dilutions/concentrations should be determined by the researcher.

Suggested dilution	Recommended dilution
WB	0.25-0.5µg/ml
ICC/IF	2µg/ml
FACS	1-3µg/1x10 ⁶ cells
ELISA	0.1-0.5µg/ml

Not tested in other applications.

Calculated MW 44 kDa. ([Note](#))

PROPERTIES

Form	Liquid
Buffer	4mg Trehalose, 0.9mg NaCl, 0.2mg Na ₂ HPO ₄
Preservative	0.05mg sodium azide
Storage	Store as concentrated solution. Centrifuge briefly prior to opening vial. For short-term storage (1-2 weeks), store at 4°C. For long-term storage, aliquot and store at -20°C or below. Avoid multiple freeze-thaw cycles.
Concentration	0.5 mg/ml (Please refer to the vial label for the specific concentration.)
Immunogen	E.coli-derived human beta 3 Adrenergic Receptor/ADRB3 recombinant protein (Position: R179-S250).
Purification	Purified by antigen-affinity chromatography
Conjugation	Unconjugated

Note

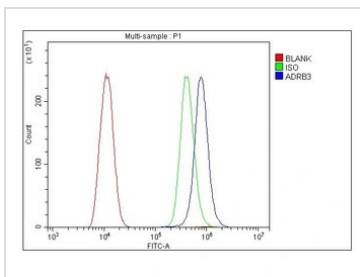
For laboratory research use only. Not for any clinical, therapeutic, or diagnostic use in humans or animals. Not for animal or human consumption.

Purchasers shall not, and agree not to enable third parties to, analyze, copy, reverse engineer or otherwise attempt to determine the structure or sequence of the product.



For full product information, images and publications, please visit our [website](#).

DATA IMAGES



GTX03468 FACS Image

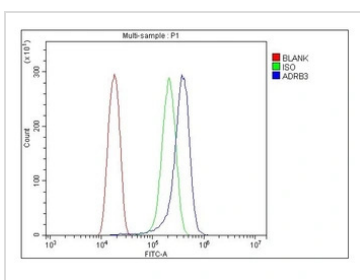
FACS analysis of THP-1 cells using GTX03468 beta 3 Adrenergic Receptor antibody.

Blue : Primary antibody

Green : Isotype control

Red : Unlabelled cell

Antibody amount : 1µg/1x10⁶ cells



GTX03468 FACS Image

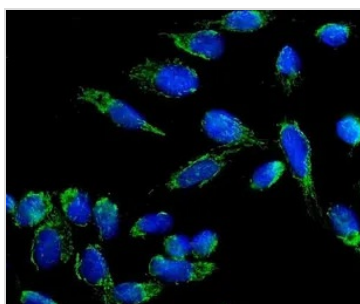
FACS analysis of HeLa cells using GTX03468 beta 3 Adrenergic Receptor antibody.

Blue : Primary antibody

Green : Isotype control

Red : Unlabelled cell

Antibody amount : 1µg/1x10⁶ cells



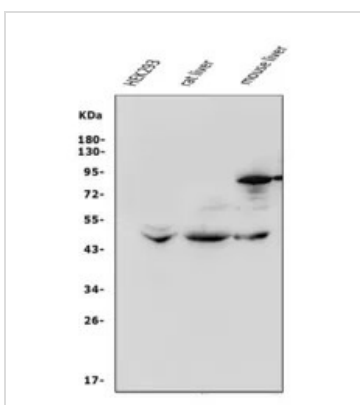
GTX03468 ICC/IF Image

ICC/IF analysis of U2OS cells using GTX03468 beta 3 Adrenergic Receptor antibody.

Antigen retrieval : Enzyme antigen retrieval was performed using enzyme antigen retrieval reagent for 15 mins.

Blue : DAPI

Dilution : 2µg/mL



GTX03468 WB Image

WB analysis of various sample lysates using GTX03468 beta 3 Adrenergic Receptor antibody.

Lane 1: HEK293 whole cell lysate

Lane 2 : rat liver tissue lysates

Lane 3 : mouse liver tissue lysate

Dilution : 0.5 µg/ml

Loading : 50µg per lane



For full product information, images and publications, please visit our [website](#).