



SZABO SCANDIC

Part of Europa Biosite

Produktinformation



Forschungsprodukte & Biochemikalien



Zellkultur & Verbrauchsmaterial



Diagnostik & molekulare Diagnostik



Laborgeräte & Service

Weitere Information auf den folgenden Seiten!
See the following pages for more information!



Lieferung & Zahlungsart

siehe unsere [Liefer- und Versandbedingungen](#)

Zuschläge

- Mindermengenzuschlag
- Trockeneiszuschlag
- Gefahrgutzuschlag
- Expressversand

SZABO-SCANDIC HandelsgmbH

Quellenstraße 110, A-1100 Wien

T. +43(0)1 489 3961-0

F. +43(0)1 489 3961-7

mail@szabo-scandic.com

www.szabo-scandic.com

[linkedin.com/company/szaboscandic](https://www.linkedin.com/company/szaboscandic) 

DLL1 antibody

Cat. No. GTX03469

Host	Rabbit
Clonality	Polyclonal
Isotype	IgG
Application	WB, ICC/IF, IHC-P, FACS, ELISA
Reactivity	Human, Mouse, Rat, Monkey

Package
100 µg

APPLICATION

Application Note

*Optimal dilutions/concentrations should be determined by the researcher.

Suggested dilution	Recommended dilution
WB	0.1-0.25µg/ml
ICC/IF	4µg/ml
IHC-P	0.5-1µg/ml
FACS	1-3µg/1x10 ⁶ cells
ELISA	0.1-0.5µg/ml

Not tested in other applications.

Calculated MW 78 kDa. ([Note](#))

PROPERTIES

Form	Liquid
Buffer	4mg Trehalose, 0.9mg NaCl, 0.2mg Na ₂ HPO ₄
Preservative	0.01mg sodium azide
Storage	Store as concentrated solution. Centrifuge briefly prior to opening vial. For short-term storage (1-2 weeks), store at 4°C. For long-term storage, aliquot and store at -20°C or below. Avoid multiple freeze-thaw cycles.
Concentration	0.5 mg/ml (Please refer to the vial label for the specific concentration.)
Immunogen	E.coli-derived human DLL1 recombinant protein (Position: Q18-K239).
Purification	Purified by antigen-affinity chromatography
Conjugation	Unconjugated

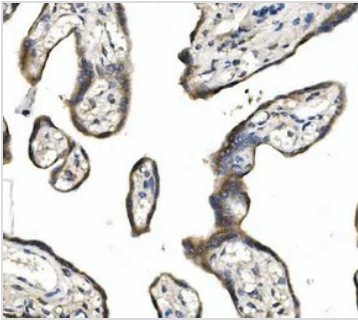


For full product information, images and publications, please visit our [website](#).

For laboratory research use only. Not for any clinical, therapeutic, or diagnostic use in humans or animals. Not for animal or human consumption.

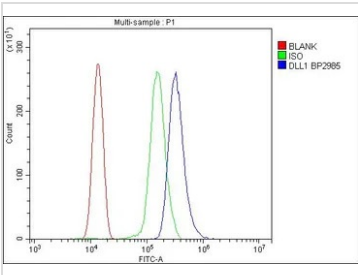
Note
Purchasers shall not, and agree not to enable third parties to, analyze, copy, reverse engineer or otherwise attempt to determine the structure or sequence of the product.

DATA IMAGES



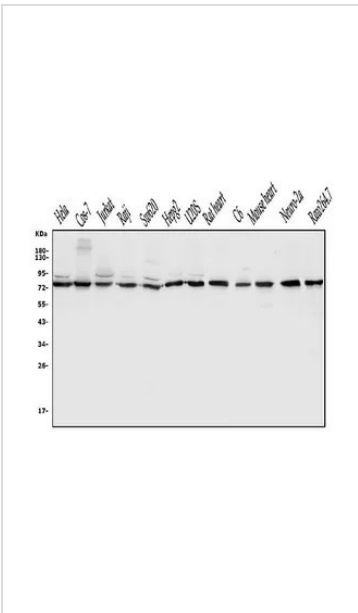
GTX03469 IHC-P Image

IHC-P analysis of human placenta tissue using GTX03469 DLL1 antibody.
Antigen retrieval : Heat mediated antigen retrieval was performed in EDTA buffer (pH 8.0, epitope retrieval solution).
Dilution : 1 µg/ml



GTX03469 FACS Image

FACS analysis of THP-1 cells using GTX03469 DLL1 antibody.
Blue : Primary antibody
Green : Isotype control
Red : Unlabelled cell
Antibody amount : 1 µg/1x10⁶ cells



GTX03469 WB Image

WB analysis of various sample lysates using GTX03469 DLL1 antibody.
Lane 1 : HeLa whole cell lysate
Lane 2 : COS-7 whole cell lysate
Lane 3 : Jurkat whole cell lysate
Lane 4 : Raji whole cell lysate
Lane 5 : SW620 whole cell lysate
Lane 6 : HepG2 whole cell lysate
Lane 7 : U2OS whole cell lysate
Lane 8 : rat heart tissue lysate
Lane 9 : C6 whole cell lysate
Lane 10 : mouse heart tissue lysate
Lane 11 : Neuro-2a whole cell lysate
Lane 12 : RAW264.7 whole cell lysate
Dilution : 0.25 µg/ml
Loading : 50µg per lane



For full product information, images and publications, please visit our [website](#).