



SZABO SCANDIC

Part of Europa Biosite

Produktinformation



Forschungsprodukte & Biochemikalien



Zellkultur & Verbrauchsmaterial



Diagnostik & molekulare Diagnostik



Laborgeräte & Service

Weitere Information auf den folgenden Seiten!
See the following pages for more information!



Lieferung & Zahlungsart

siehe unsere [Liefer- und Versandbedingungen](#)

Zuschläge

- Mindermengenzuschlag
- Trockeneiszuschlag
- Gefahrgutzuschlag
- Expressversand

SZABO-SCANDIC HandelsgmbH

Quellenstraße 110, A-1100 Wien

T. +43(0)1 489 3961-0

F. +43(0)1 489 3961-7

mail@szabo-scandic.com

www.szabo-scandic.com

[linkedin.com/company/szaboscandic](https://www.linkedin.com/company/szaboscandic)

MyoD1 antibody

Cat. No. GTX03495

Host	Rabbit
Clonality	Polyclonal
Isotype	IgG
Application	WB, ICC/IF
Reactivity	Human

Package
400 µl

APPLICATION

Application Note

*Optimal dilutions/concentrations should be determined by the researcher.

Suggested dilution	Recommended dilution
WB	1:4000
ICC/IF	1:25

Not tested in other applications.

Calculated MW 35 kDa. ([Note](#))

PROPERTIES

Form	Liquid
Buffer	PBS
Preservative	0.09% sodium azide
Storage	Store as concentrated solution. Centrifuge briefly prior to opening vial. For short-term storage (1-2 weeks), store at 4°C. For long-term storage, aliquot and store at -20°C or below. Avoid multiple freeze-thaw cycles.
Concentration	Batch dependent (Please refer to the vial label for the specific concentration.)
Immunogen	KLH conjugated synthetic peptide between 211-240 amino acids from the Central region of human MyoD1.
Purification	Protein A purified followed by antigen-affinity chromatography
Conjugation	Unconjugated

Note

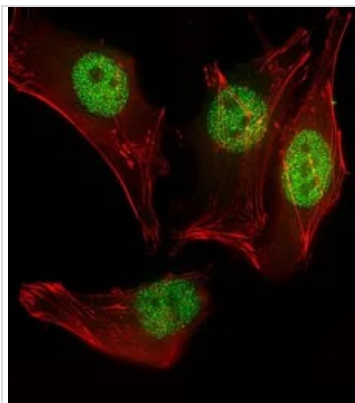
For laboratory research use only. Not for any clinical, therapeutic, or diagnostic use in humans or animals. Not for animal or human consumption.

Purchasers shall not, and agree not to enable third parties to, analyze, copy, reverse engineer or otherwise attempt to determine the structure or sequence of the product.



For full product information, images and publications, please visit our [website](#).

DATA IMAGES

**GTX03495 ICC/IF Image**

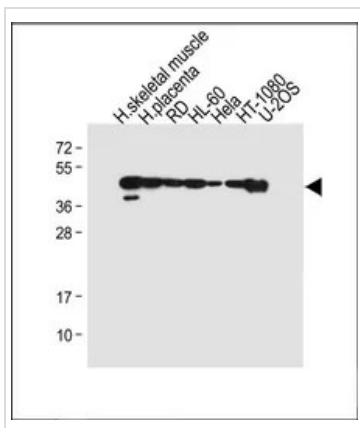
ICC/IF analysis of 4% PFA-fixed HeLa cells using GTX03495 MyoD1 antibody.

Green : Primary antibody

Red : Actin

Permeabilization : 0.1% Triton X-100

Dilution : 1:25

**GTX03495 WB Image**

WB analysis of various sample lysates using GTX03495 MyoD1 antibody.

Lane 1 : Human skeletal muscle tissue lysate

Lane 2 : Human placenta tissue lysate

Lane 3 : RD whole cell lysate

Lane 4 : HL-60 whole cell lysate

Lane 5 : HeLa whole cell lysate

Lane 6 : HT-1080 whole cell lysate

Lane 7 : U-2OS whole cell lysate

Dilution : 1:4000

Loading : 20 µg per lane



For full product information, images and publications, please visit our [website](#).