



# SZABO SCANDIC

Part of Europa Biosite

## Produktinformation



Forschungsprodukte & Biochemikalien



Zellkultur & Verbrauchsmaterial



Diagnostik & molekulare Diagnostik



Laborgeräte & Service

Weitere Information auf den folgenden Seiten!  
See the following pages for more information!



### Lieferung & Zahlungsart

siehe unsere [Liefer- und Versandbedingungen](#)

### Zuschläge

- Mindermengenzuschlag
- Trockeneiszuschlag
- Gefahrgutzuschlag
- Expressversand

### SZABO-SCANDIC HandelsgmbH

Quellenstraße 110, A-1100 Wien

T. +43(0)1 489 3961-0

F. +43(0)1 489 3961-7

[mail@szabo-scandic.com](mailto:mail@szabo-scandic.com)

[www.szabo-scandic.com](http://www.szabo-scandic.com)

[linkedin.com/company/szaboscandic](https://www.linkedin.com/company/szaboscandic) 

## DRP1 (phospho Ser637) antibody

**Cat. No. GTX03497**

<b>Host</b>	Rabbit
<b>Clonality</b>	Polyclonal
<b>Isotype</b>	IgG
<b>Application</b>	WB
<b>Reactivity</b>	Mouse

**Package**  
100 µl

## APPLICATION

**Application Note**

\*Optimal dilutions/concentrations should be determined by the researcher.

**Suggested dilution**                      **Recommended dilution**

WB    1:500-1:2000

Not tested in other applications.

**Calculated MW**                      82 kDa. ([Note](#))

## PROPERTIES

**Form**                                      Liquid**Buffer**                                    PBS pH7.3, 50% glycerol**Preservative**                          0.02% sodium azide**Storage**                                  Store as concentrated solution. Centrifuge briefly prior to opening vial. For short-term storage (1-2 weeks), store at 4°C. For long-term storage, aliquot and store at -20°C or below. Avoid multiple freeze-thaw cycles.**Concentration**                          Batch dependent (Please refer to the vial label for the specific concentration.)**Immunogen**                            A synthetic phosphorylated peptide around S637 of human DRP1 (NP\_036192.2).**Purification**                            Purified by affinity chromatography**Conjugation**                            Unconjugated**Note**

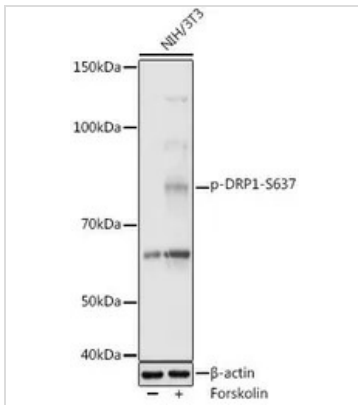
For laboratory research use only. Not for any clinical, therapeutic, or diagnostic use in humans or animals. Not for animal or human consumption.

Purchasers shall not, and agree not to enable third parties to, analyze, copy, reverse engineer or otherwise attempt to determine the structure or sequence of the product.



For full product information, images and publications, please visit our [website](#).

## DATA IMAGES

**GTX03497 WB Image**

WB analysis of NIH/3T3 cell treated with Forskolin (30  $\mu$ M) at 37°C for 30 minutes after serum-starvation overnight lysate using GTX03497 DRP1 (phospho Ser637) antibody. The signal is developed using an Enhanced Chemiluminescent detection (ECL) kit.

Dilution : 1:500

Loading : 25  $\mu$ g per lane



For full product information, images and publications, please visit our [website](#).