



SZABO SCANDIC

Part of Europa Biosite

Produktinformation



Forschungsprodukte & Biochemikalien



Zellkultur & Verbrauchsmaterial



Diagnostik & molekulare Diagnostik



Laborgeräte & Service

Weitere Information auf den folgenden Seiten!
See the following pages for more information!



Lieferung & Zahlungsart

siehe unsere [Liefer- und Versandbedingungen](#)

Zuschläge

- Mindermengenzuschlag
- Trockeneiszuschlag
- Gefahrgutzuschlag
- Expressversand

SZABO-SCANDIC HandelsgmbH

Quellenstraße 110, A-1100 Wien

T. +43(0)1 489 3961-0

F. +43(0)1 489 3961-7

mail@szabo-scandic.com

www.szabo-scandic.com

[linkedin.com/company/szaboscandic](https://www.linkedin.com/company/szaboscandic) 

Human MMP26 protein (active)

Cat. No. GTX03552-pro

Application	Functional Assay
Species	Human

Package
100 µg

APPLICATION

Application Note

Measured by its ability to cleave the fluorogenic peptide substrate, Mca-Pro-Leu-Gly-Leu-Dpa-Ala-Arg-NH₂. The specific activity is > 60 pmol/min/µg.

Observed MW 19 kDa.

PROPERTIES

Form Lyophilized powder

Buffer Batch dependent (please contact us for details)

Storage Store at -20°C or below. After reconstitution, keep as concentrated solution. Aliquot and store at -20°C or below. Avoid freeze-thaw cycles.

Region/Sequence No tag; Thr90-Pro261 (NP_068573.2)

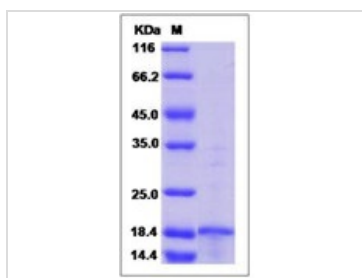
Expression System E. coli

Purity > 90 % by SDS-PAGE.

Conjugation Unconjugated

Note For laboratory use only. Not for any clinical, therapeutic, or diagnostic use in humans or animals. Not for animal or human consumption.

DATA IMAGES



GTX03552-pro Image

SDS-PAGE of GTX03552-pro human MMP26 protein (active).



For full product information, images and publications, please visit our [website](#).